



[Go to Product page](#)

Datasheet for ABIN1502212

anti-MYL1 antibody

1 Image

Overview

Quantity:	100 µg
Target:	MYL1
Reactivity:	Human, Rat, Rabbit
Host:	Mouse
Clonality:	Monoclonal
Application:	Western Blotting (WB), Immunohistochemistry (IHC), Immunohistochemistry (Paraffin-embedded Sections) (IHC (p))

Product Details

Immunogen:	Rabbit muscle myosin. Type of Immunogen: Purified protein
Clone:	MY-38
Isotype:	IgG1
Specificity:	Myosin, Fast Skeletal.
Purification:	Affinity purified

Target Details

Target:	MYL1
Abstract:	MYL1 Products

Application Details

Application Notes: Optimal working dilution should be determined by the investigator.

Comment: Target Species of Antibody: Rabbit

Restrictions: For Research Use only

Handling

Format: Lyophilized

Reconstitution: 1.2 % sodium acetate or neutral PBS.

Concentration: Lot specific

Buffer: Lyophilized from 1.2 % sodium acetate, 2 mg BSA, 0.01 mg sodium azide as preservative

Preservative: Sodium azide

Precaution of Use: This product contains Sodium azide: a POISONOUS AND HAZARDOUS SUBSTANCE which should be handled by trained staff only.

Storage: 4 °C,-20 °C

Storage Comment: Short term: 4°C
Long term: -20°C.

Images

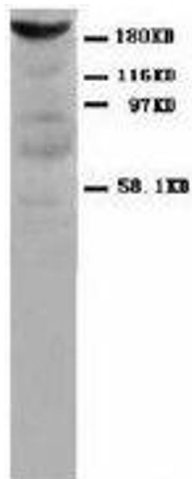


Image 1.