

Datasheet for ABIN1502456
anti-Cullin 4B antibody



[Go to Product page](#)

2 Images

Overview

Quantity:	100 µg
Target:	Cullin 4B (CUL4B)
Reactivity:	Human, Rat, Zebrafish (Danio rerio), Fish
Host:	Rabbit
Clonality:	Polyclonal
Conjugate:	This Cullin 4B antibody is un-conjugated
Application:	Western Blotting (WB), Immunohistochemistry (IHC), Immunohistochemistry (Paraffin-embedded Sections) (IHC (p))

Product Details

Immunogen:	Synthetic peptide corresponding to a sequence of human Cullin 4B, identical to the related rat and mouse sequence. Type of Immunogen: Synthetic peptide
Specificity:	Zebrafish, human, rat. No cross reactivity with other proteins.
Cross-Reactivity (Details):	No cross reactivity with other proteins.
Purification:	Immunoaffinity purified

Target Details

Target:	Cullin 4B (CUL4B)
Alternative Name:	Cullin 4B / CUL4B (CUL4B Products)

Target Details

Background:	Name/Gene ID: CUL4B Synonyms: CUL4B, CUL-4B, Cullin 4B, Cullin-4B, MRXS15, KIAA0695, SFM2, MRXHF2, MRXSC
Gene ID:	8450
UniProt:	Q13620

Application Details

Application Notes:	Optimal working dilution should be determined by the investigator.
Comment:	Target Species of Antibody: Human
Restrictions:	For Research Use only

Handling

Format:	Liquid
Concentration:	Lot specific
Buffer:	5 mg BSA, 0.9 mg sodium chloride, 0.2 mg sodium phosphate, 0.05 mg Thimerosal, 0.05 mg sodium azide
Preservative:	Thimerosal (Merthiolate), Sodium azide
Precaution of Use:	This product contains Sodium azide and Thimerosal (Merthiolate): POISONOUS AND HAZARDOUS SUBSTANCES which should be handled by trained staff only.
Storage:	4 °C,-20 °C
Storage Comment:	Short term: 4°C Long term: -20°C.

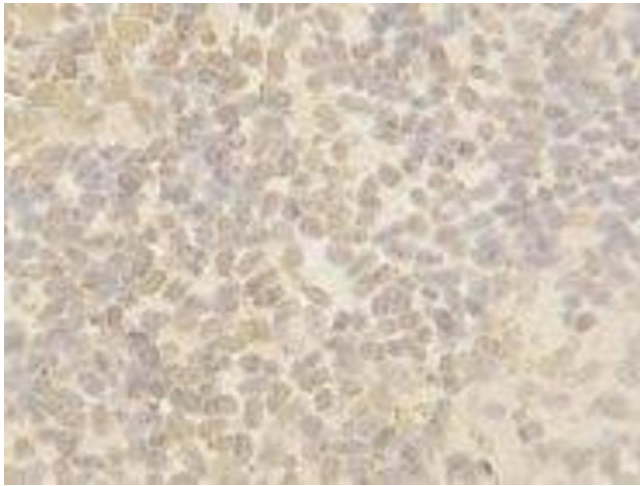


Image 1.

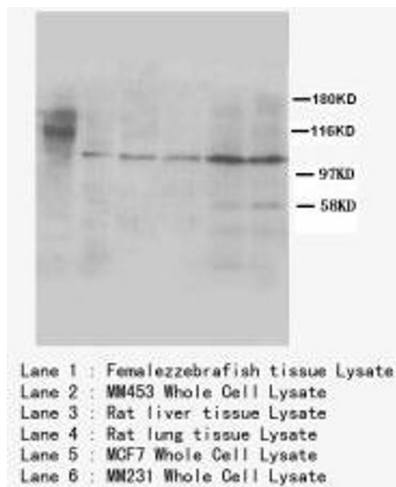


Image 2.