

Datasheet for ABIN1512520

anti-alpha 2 Macroglobulin antibody (AA 1155-1474)[Go to Product page](#)**2** Images

Overview

Quantity:	100 µg
Target:	alpha 2 Macroglobulin (A2M)
Binding Specificity:	AA 1155-1474
Reactivity:	Human
Host:	Rabbit
Clonality:	Polyclonal
Conjugate:	This alpha 2 Macroglobulin antibody is un-conjugated
Application:	Western Blotting (WB)

Product Details

Immunogen:	Recombinant fusion protein containing a sequence corresponding to amino acids 1155-1474 of human Alpha-2-Macroglobulin (Alpha-2-Macroglobulin (A2M)) (NP_000005.2).
Sequence:	ALAGNQDKRK EVLKSLNEEA VKKDNSVHWE RPQKPKAPVG HFYEPQAPSA EEMTSYVLL AYLTAQPAPT SEDLTSATNI VKWITKQNA QGGFSSTQDT VVALHALSKY GAATFTRTGK AAQVTIQSSG TFSSKFQVDN NNRLLLQQVS LPELPGEYSM KVTGEGCVYL QTSLKYNILP EKEEFPFALG VQTLPTCDE PKAHTSFQIS LSVSYTGSRS ASNMAIVDK MMSGFIPLKP TVKMLERSNH VSRTEVSSNH VLIYLDKVSQ QTLSLFFTVL QDVPVRDLKP AIVKVYDYEE TDEFAIAEYN APCSKDLGNA
Isotype:	IgG
Cross-Reactivity:	Human, Mouse, Rat
Characteristics:	Polyclonal Antibodies

Product Details

Purification: Affinity purification

Target Details

Target: alpha 2 Macroglobulin (A2M)

Alternative Name: A2M ([A2M Products](#))

Background: Alpha-2-macroglobulin is a protease inhibitor and cytokine transporter. It inhibits many proteases, including trypsin, thrombin and collagenase. A2M is implicated in Alzheimer disease (AD) due to its ability to mediate the clearance and degradation of A-beta, the major component of beta-amyloid deposits.,A2M,A2MD,CPAMD5,FWP007,S863-7,Cell Biology & Developmental Biology,Ubiquitin,Cardiovascular,Blood,Serum Proteins,A2M

Molecular Weight: 163 kDa

Gene ID: 2

UniProt: [P01023](#)

Pathways: [Lipid Metabolism](#)

Application Details

Application Notes: WB,1:500 - 1:2000

Restrictions: For Research Use only

Handling

Format: Liquid

Buffer: PBS with 0.02 % sodium azide,50 % glycerol, pH 7.3.

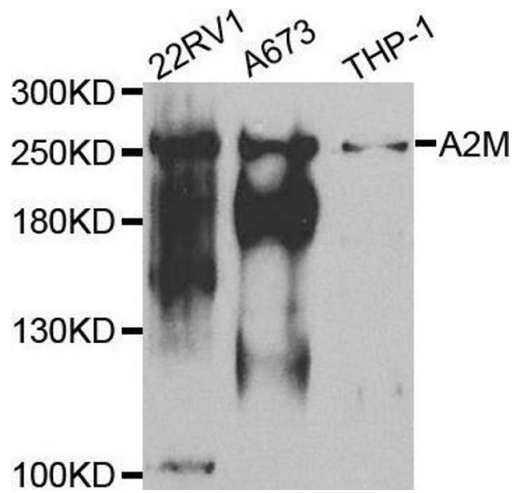
Preservative: Sodium azide

Precaution of Use: This product contains Sodium azide: a POISONOUS AND HAZARDOUS SUBSTANCE which should be handled by trained staff only.

Handling Advice: Avoid freeze / thaw cycles

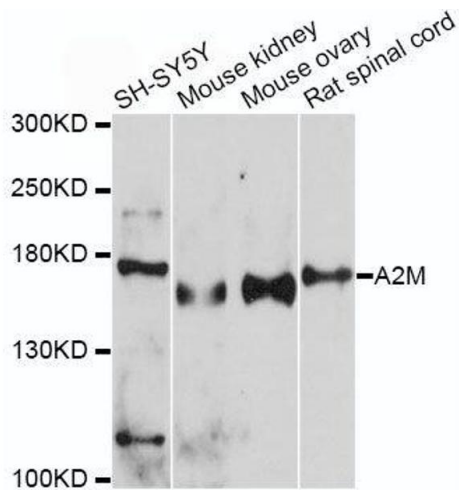
Storage: -20 °C

Storage Comment: Store at -20°C. Avoid freeze / thaw cycles.



Western Blotting

Image 1. Western blot analysis of extracts of various cell lines, using A2M antibody.



Western Blotting

Image 2. Western blot analysis of extracts of various cell lines, using A2M antibody.