



Datasheet for ABIN1512652  
**anti-BVES antibody (AA 241-360)**



[Go to Product page](#)

2 Images

Overview

Quantity:	100 µg
Target:	BVES
Binding Specificity:	AA 241-360
Reactivity:	Human
Host:	Rabbit
Clonality:	Polyclonal
Conjugate:	This BVES antibody is un-conjugated
Application:	Western Blotting (WB)

Product Details

Immunogen:	Recombinant fusion protein containing a sequence corresponding to amino acids 241-360 of human BVES (NP_001186492.1).
Sequence:	SEPFLYEIFR YLIGKDITNK LYSLNDPTLN DKKAKKLEHQ LSLCTQISML EMRNSIASSS DSDDGLHQFL RGTSSMSSLH VSSPHQRASA KMKPIEEGAE DDDDVFEFAS PNTLVKHQLP
Isotype:	IgG
Cross-Reactivity:	Human, Mouse
Characteristics:	Polyclonal Antibodies
Purification:	Affinity purification

## Target Details

---

Target:	BVES
Alternative Name:	BVES ( <a href="#">BVES Products</a> )
Background:	This gene encodes a member of the POP family of proteins containing three putative transmembrane domains. This gene is expressed in cardiac and skeletal muscle and may play an important role in development of these tissues. The mouse ortholog may be involved in the regeneration of adult skeletal muscle and may act as a cell adhesion molecule in coronary vasculogenesis. Three transcript variants encoding the same protein have been found for this gene.,BVES,HBVES,LGMD2X,POP1,POPDC1,Signal Transduction,Cell Biology & Developmental Biology,Cell Adhesion,Tight Junctions,Cytoskeleton,BVES
Molecular Weight:	41 kDa
Gene ID:	11149
UniProt:	<a href="#">Q8NE79</a>

## Application Details

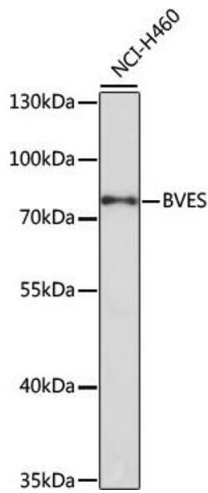
---

Application Notes:	WB,1:500 - 1:2000
Restrictions:	For Research Use only

## Handling

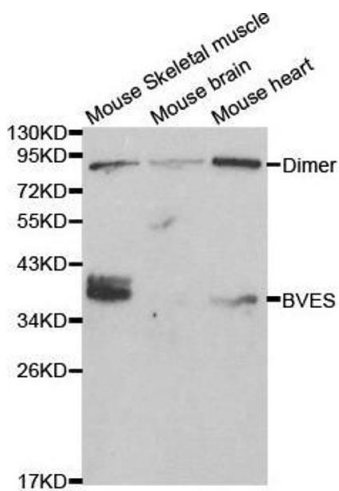
---

Format:	Liquid
Buffer:	PBS with 0.02 % sodium azide,50 % glycerol, pH 7.3.
Preservative:	Sodium azide
Precaution of Use:	This product contains Sodium azide: a POISONOUS AND HAZARDOUS SUBSTANCE which should be handled by trained staff only.
Handling Advice:	Avoid freeze / thaw cycles
Storage:	-20 °C
Storage Comment:	Store at -20°C. Avoid freeze / thaw cycles.



### Western Blotting

**Image 1.** Western blot analysis of extracts of NCI-H460 cells, using BVES antibody (ABIN3020695, ABIN3020696, ABIN1512652 and ABIN6213674) at 1:1000 dilution. Secondary antibody: HRP Goat Anti-Rabbit IgG (H+L) (ABIN1684268 and ABIN3020597) at 1:10000 dilution. Lysates/proteins: 25 µg per lane. Blocking buffer: 3 % nonfat dry milk in TBST. Detection: ECL Basic Kit (RM00020). Exposure time: 45s.



### Western Blotting

**Image 2.** Western blot analysis of extracts of various cell lines, using BVES antibody.