

Datasheet for ABIN1512681
anti-CBX3 antibody (AA 1-183)

5 Images

[Go to Product page](#)

Overview

Quantity:	100 µg
Target:	CBX3
Binding Specificity:	AA 1-183
Reactivity:	Human
Host:	Rabbit
Clonality:	Polyclonal
Conjugate:	This CBX3 antibody is un-conjugated
Application:	Western Blotting (WB), Immunohistochemistry (IHC), Immunoprecipitation (IP), Immunofluorescence (IF)

Product Details

Immunogen:	Recombinant fusion protein containing a sequence corresponding to amino acids 1-183 of human HP1 gamma/HP1 gamma/CBX3 (NP_009207.2).
Sequence:	MASNKTTLQK MGKKQNGKSK KVEEAPEEF VVEKVLDRRV VNGKVEYFLK WKGFTDADNT WEPEENLDCP ELIEAFLNSQ KAGKEKDGTK RKSLSDSESD DSKSKKKRDA ADKPRGFARG LDPERIIGAT DSSGELMFLM KWKDSDEADL VLAKEANMKC PQIVIAFYEE RLTWHSCPED EAQ
Isotype:	IgG
Cross-Reactivity:	Human, Mouse, Rat
Characteristics:	Polyclonal Antibodies
Purification:	Affinity purification

Target Details

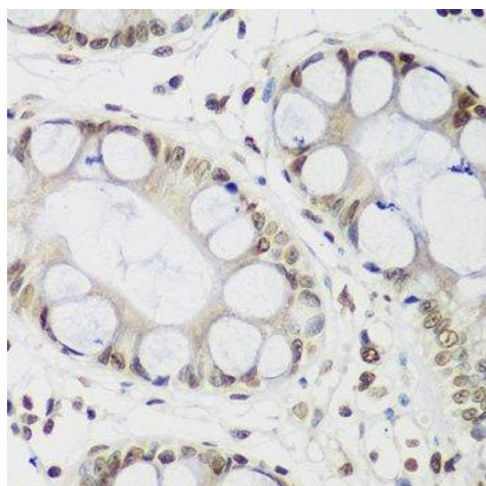
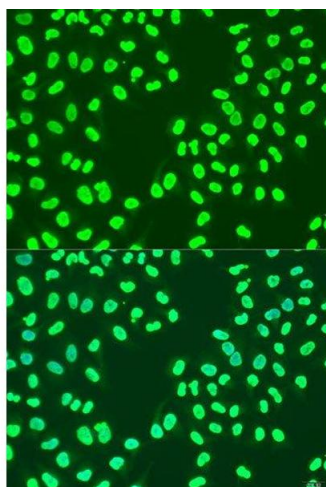
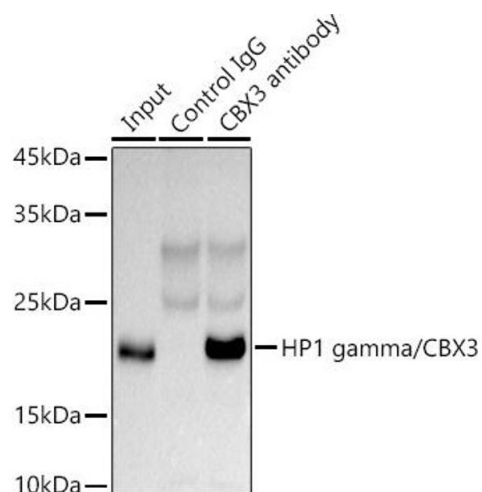
Target:	CBX3
Alternative Name:	CBX3 (CBX3 Products)
Background:	At the nuclear envelope, the nuclear lamina and heterochromatin are adjacent to the inner nuclear membrane. The protein encoded by this gene binds DNA and is a component of heterochromatin. This protein also can bind lamin B receptor, an integral membrane protein found in the inner nuclear membrane. The dual binding functions of the encoded protein may explain the association of heterochromatin with the inner nuclear membrane. This protein binds histone H3 tails methylated at Lys-9 sites. This protein is also recruited to sites of ultraviolet-induced DNA damage and double-strand breaks. Two transcript variants encoding the same protein but differing in the 5' UTR, have been found for this gene.,CBX3,HECH,HP1-GAMMA,HP1Hs-gamma,Epigenetics & Nuclear Signaling,CBX3
Molecular Weight:	20 kDa
Gene ID:	11335
UniProt:	Q13185

Application Details

Application Notes:	WB,1:500 - 1:2000,IHC,1:50 - 1:200,IF,1:50 - 1:200,IP,1:50 - 1:200
Restrictions:	For Research Use only

Handling

Format:	Liquid
Buffer:	PBS with 0.02 % sodium azide,50 % glycerol, pH 7.3.
Preservative:	Sodium azide
Precaution of Use:	This product contains Sodium azide: a POISONOUS AND HAZARDOUS SUBSTANCE which should be handled by trained staff only.
Handling Advice:	Avoid freeze / thaw cycles
Storage:	-20 °C
Storage Comment:	Store at -20°C. Avoid freeze / thaw cycles.



Immunoprecipitation

Image 1. Immunoprecipitation analysis of 300 µg extracts of HeLa cells using 3 µg HP1 gamma/CBX3 antibody (ABIN1512681, ABIN3023226, ABIN3023227 and ABIN5664024). Western blot was performed from the immunoprecipitate using HP1 gamma/CBX3 antibody (ABIN1512681, ABIN3023226, ABIN3023227 and ABIN5664024) at a dilution of 1:1000.

Immunofluorescence

Image 2. Immunofluorescence analysis of U2OS cells using CBX3 antibody.

Immunohistochemistry (Paraffin-embedded Sections)

Image 3. Immunohistochemistry of paraffin-embedded human gastric using CBX3 antibody.

Please check the [product details page](#) for more images. Overall 5 images are available for ABIN1512681.