



[Go to Product page](#)

Datasheet for ABIN1513015
anti-HLA-B antibody (AA 1-100)

5 Images

Overview

Quantity:	100 µg
Target:	HLA-B
Binding Specificity:	AA 1-100
Reactivity:	Human
Host:	Rabbit
Clonality:	Polyclonal
Conjugate:	This HLA-B antibody is un-conjugated
Application:	Western Blotting (WB), Immunohistochemistry (IHC), Immunofluorescence (IF)

Product Details

Immunogen:	A synthetic peptide corresponding to a sequence within amino acids 1-100 of human HLA-B (NP_005505.2).
Sequence:	MLVMAPRTVL LLLSAALALT ETWAGSHSMR YFYTSVSRPG RGEPRFISVG YVDDTQFVRF DSDAASPREE PRAPWIEQEG PEYWRNTQI YKAQAQTDRE
Isotype:	IgG
Cross-Reactivity:	Human, Mouse, Rat
Characteristics:	Polyclonal Antibodies
Purification:	Affinity purification

Target Details

Target:	HLA-B
Alternative Name:	HLA-B (HLA-B Products)
Background:	<p>HLA-B belongs to the HLA class I heavy chain paralogues. This class I molecule is a heterodimer consisting of a heavy chain and a light chain (beta-2 microglobulin). The heavy chain is anchored in the membrane. Class I molecules play a central role in the immune system by presenting peptides derived from the endoplasmic reticulum lumen. They are expressed in nearly all cells. The heavy chain is approximately 45 kDa and its gene contains 8 exons. Exon 1 encodes the leader peptide, exon 2 and 3 encode the alpha1 and alpha2 domains, which both bind the peptide, exon 4 encodes the alpha3 domain, exon 5 encodes the transmembrane region and exons 6 and 7 encode the cytoplasmic tail. Polymorphisms within exon 2 and exon 3 are responsible for the peptide binding specificity of each class one molecule. Typing for these polymorphisms is routinely done for bone marrow and kidney transplantation. Hundreds of HLA-B alleles have been described.,HLA-B,AS,B-4901,HLAB,Bw-47,Bw-50,SPDA1,Immunology & Inflammation,HLA-B</p>
Molecular Weight:	40 kDa
Gene ID:	3106
UniProt:	P01889
Pathways:	Regulation of Leukocyte Mediated Immunity , Positive Regulation of Immune Effector Process , Cancer Immune Checkpoints , Human Leukocyte Antigen (HLA) in Adaptive Immune Response

Application Details

Application Notes:	WB,1:1000 - 1:2000,IHC,1:50 - 1:200,IF,1:50 - 1:200
Restrictions:	For Research Use only

Handling

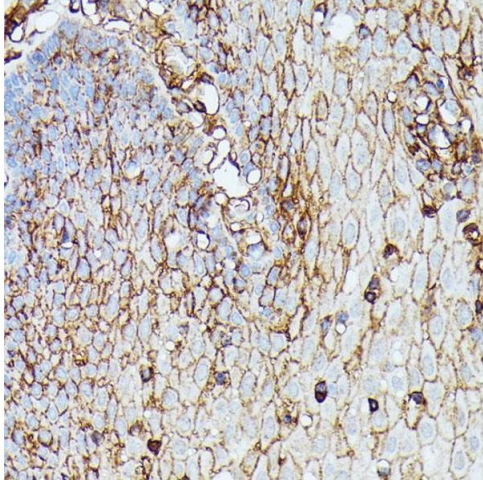
Format:	Liquid
Buffer:	PBS with 0.02 % sodium azide,50 % glycerol, pH 7.3.
Preservative:	Sodium azide
Precaution of Use:	This product contains Sodium azide: a POISONOUS AND HAZARDOUS SUBSTANCE which should be handled by trained staff only.
Handling Advice:	Avoid freeze / thaw cycles

Handling

Storage: -20 °C

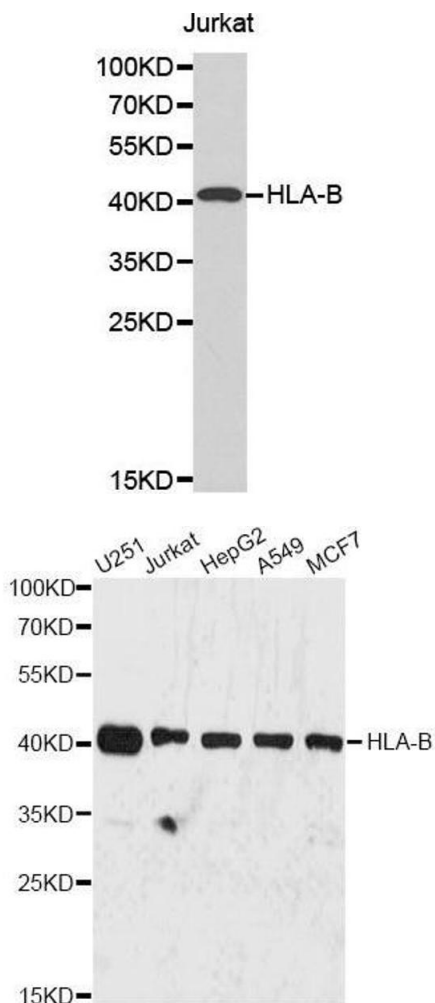
Storage Comment: Store at -20°C. Avoid freeze / thaw cycles.

Images



Immunohistochemistry

Image 1. Immunohistochemistry of paraffin-embedded human esophageal using HLA-B antibody (ABIN1513015, ABIN3021868, ABIN3021869 and ABIN6216628) at dilution of 1:100 (40x lens). Perform microwave antigen retrieval with 10 mM PBS buffer pH 7.2 before commencing with IHC staining protocol.



Western Blotting

Image 2. Western blot analysis of extracts of Jurkat cell line, using HLA-B antibody.

Western Blotting

Image 3. Western blot analysis of extracts of various cell lines, using HLA-B antibody.

Please check the [product details page](#) for more images. Overall 5 images are available for ABIN1513015.