

Datasheet for ABIN1513160
anti-Lamin B1 antibody

6 Images

[Go to Product page](#)

Overview

Quantity:	100 µg
Target:	Lamin B1 (LMNB1)
Reactivity:	Human, Mouse, Rat
Host:	Rabbit
Clonality:	Polyclonal
Conjugate:	This Lamin B1 antibody is un-conjugated
Application:	Western Blotting (WB), Immunohistochemistry (IHC), Immunofluorescence (IF), Immunoprecipitation (IP)

Product Details

Immunogen:	Fusion protein of human LMNB1
Isotype:	IgG
Purification:	Affinity purification

Target Details

Target:	Lamin B1 (LMNB1)
Alternative Name:	LMNB1 (LMNB1 Products)
Background:	Lamins are nuclear membrane structural components that are important in maintaining normal cell functions, such as cell cycle control, DNA replication, and chromatin organization. Lamins have been subdivided into types A and B. Type-A lamins consist of lamin A and C, arising from alternative splicing. Lamin A and C are cleaved by caspases into large (41-50 kDa) and small

Target Details

(28 kDa) fragments, which can be used as markers for apoptosis. Type-B lamins consist of lamin B1 and B2, encoded by separate genes. Lamin B1 is also cleaved by caspases during apoptosis. Research studies have shown that duplication of the lamin B1 gene is correlated with the pathogenesis of the neurological disorder adult-onset leukodystrophy.

Synonyms: ADLD, LMN, LMN2, LMNB, MGC111419, Lamin B1

Gene ID: 4001

UniProt: [P20700](#)

Pathways: [Apoptosis](#), [Caspase Cascade in Apoptosis](#)

Application Details

Application Notes: Recommended dilutions: WB: 1:500-1:1000, IHC: 1:50-1:100, IF: 1:20-1:50, IP: 1:20-1:50

Restrictions: For Research Use only

Handling

Format: Liquid

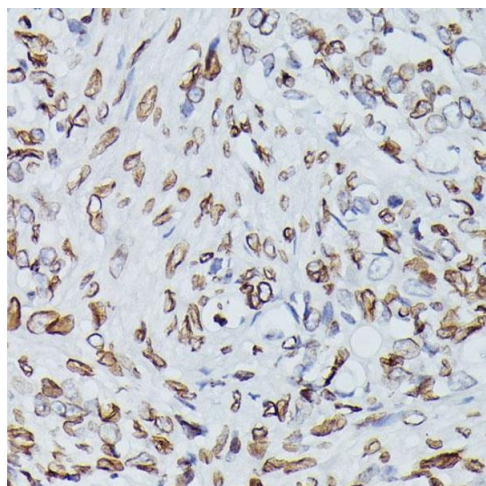
Buffer: PBS with 0.02 % sodium azide, 50 % glycerol, pH 7.3

Preservative: Sodium azide

Precaution of Use: This product contains sodium azide: a POISONOUS AND HAZARDOUS SUBSTANCE which should be handled by trained staff only.

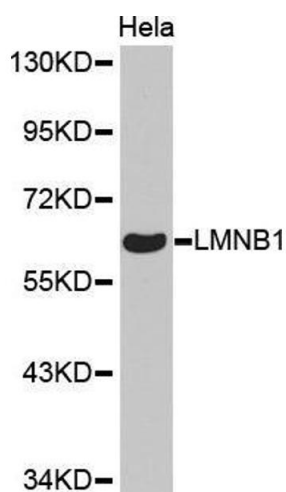
Handling Advice: Avoid freeze / thaw cycles

Storage: -20 °C/-80 °C



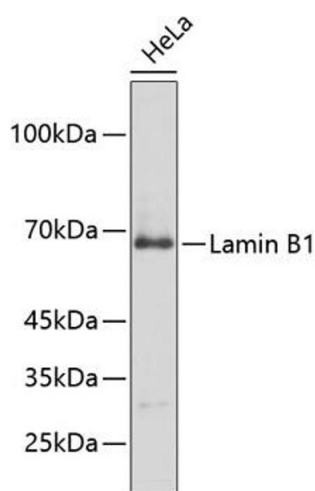
Immunohistochemistry

Image 1. Immunohistochemistry of paraffin-embedded human oophoroma using Lamin B1 antibody (ABIN1513160, ABIN3023296 and ABIN3023297) at dilution of 1:100 (40x lens). Perform microwave antigen retrieval with 10 mM PBS buffer pH 7.2 before commencing with IHC staining protocol.



Western Blotting

Image 2.



Western Blotting

Image 3. Western blot analysis of extracts of HeLa cells, using Lamin B1 antibody (ABIN1513160, ABIN3023296 and ABIN3023297). Secondary antibody: HRP Goat Anti-Rabbit IgG (H+L) (ABIN1684268 and ABIN3020597) at 1:10000 dilution. Lysates/proteins: 25 µg per lane. Blocking buffer: 3 % nonfat dry milk in TBST.

Please check the [product details page](#) for more images. Overall 6 images are available for ABIN1513160.