



[Go to Product page](#)

Datasheet for ABIN1513224
anti-MTHFR antibody (AA 1-230)

1 Image

Overview

| | |
|----------------------|--------------------------------------|
| Quantity: | 100 µg |
| Target: | MTHFR |
| Binding Specificity: | AA 1-230 |
| Reactivity: | Human |
| Host: | Rabbit |
| Clonality: | Polyclonal |
| Conjugate: | This MTHFR antibody is un-conjugated |
| Application: | Western Blotting (WB) |

Product Details

| | |
|-------------------|--|
| Immunogen: | Recombinant fusion protein containing a sequence corresponding to amino acids 1-230 of human MTHFR (NP_005948.3). |
| Sequence: | MVNEARGNSS LNPCLEGSAS SGSESSKDSS RCSTPGLDPE RHERLREKMR RRLESGDKWF SLEFFPPRPTA EGAVNLISRF DRMAAGGPLY IDVTWHPAGD PGSDKETSSM MIASTAVNYC GLETILHMTG CRQRLEEITG HLHKAKQLGL KNIMALRGDP IGDQWEEEEEG GFNYAVDLVK HIRSEFGDYF DICVAGYPKG HPEAGSFEAD LKHLKEKQVSA GADFIITQLF |
| Isotype: | IgG |
| Cross-Reactivity: | Human |
| Characteristics: | Polyclonal Antibodies |

Target Details

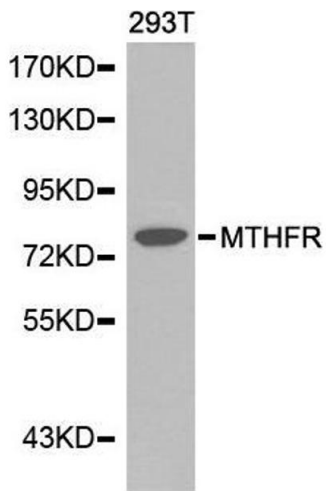
| | |
|-------------------|--|
| Target: | MTHFR |
| Alternative Name: | MTHFR (MTHFR Products) |
| Background: | <p>The protein encoded by this gene catalyzes the conversion of 5,10-methylenetetrahydrofolate to 5-methyltetrahydrofolate, a co-substrate for homocysteine remethylation to methionine. Genetic variation in this gene influences susceptibility to occlusive vascular disease, neural tube defects, colon cancer and acute leukemia, and mutations in this gene are associated with methylenetetrahydrofolate reductase deficiency.,MTHFR,Signal Transduction,Endocrine & Metabolism,Amino acid metabolism,MTHFR</p> |
| Molecular Weight: | 75 kDa |
| Gene ID: | 4524 |
| UniProt: | P42898 |
| Pathways: | Methionine Biosynthetic Process |

Application Details

| | |
|--------------------|-----------------------|
| Application Notes: | WB,1:500 - 1:2000 |
| Restrictions: | For Research Use only |

Handling

| | |
|--------------------|--|
| Format: | Liquid |
| Buffer: | PBS with 0.02 % sodium azide,50 % glycerol, pH 7.3. |
| Preservative: | Sodium azide |
| Precaution of Use: | This product contains Sodium azide: a POISONOUS AND HAZARDOUS SUBSTANCE which should be handled by trained staff only. |
| Handling Advice: | Avoid freeze / thaw cycles |
| Storage: | -20 °C |
| Storage Comment: | Store at -20°C. Avoid freeze / thaw cycles. |



Western Blotting

Image 1. Western blot analysis of extracts of 293T cell line, using MTHFR antibody.