

Datasheet for ABIN1513598  
**anti-TET2 antibody (AA 1833-2002)**



[Go to Product page](#)

5 Images

## Overview

Quantity:	100 µg
Target:	TET2
Binding Specificity:	AA 1833-2002
Reactivity:	Human
Host:	Rabbit
Clonality:	Polyclonal
Conjugate:	This TET2 antibody is un-conjugated
Application:	Western Blotting (WB), Immunohistochemistry (IHC)

## Product Details

Immunogen:	Recombinant fusion protein containing a sequence corresponding to amino acids 1833-2002 of human TET2 (NP_001120680.1).
Sequence:	VQGVASGAED NDEVWSDSEQ SFLDPDIGGV AVAPTHGSIL IECAKRELHA TTPLKNPNRN HPTRISLVFY QHKSMNEPKH GLALWEAKMA EKAREKEEEC EKYGPDYVPQ KSHGKKVKRE PAEPHETSEP TYLRFIKSLA ERTMSVTTDS TVTTSPLYAFT RVTGPYNRYI
Isotype:	IgG
Cross-Reactivity:	Human, Mouse, Rat
Characteristics:	Polyclonal Antibodies

## Target Details

Target:	TET2
---------	------

## Target Details

---

Alternative Name:	TET2 ( <a href="#">TET2 Products</a> )
Background:	The protein encoded by this gene is a methylcytosine dioxygenase that catalyzes the conversion of methylcytosine to 5-hydroxymethylcytosine. The encoded protein is involved in myelopoiesis, and defects in this gene have been associated with several myeloproliferative disorders. Two variants encoding different isoforms have been found for this gene.,MDS,KIAA1546,TET2,Epigenetics & Nuclear Signaling,Chromatin Modifying Enzymes,DNA Demethylation,TET2
Molecular Weight:	130 kDa/133 kDa/223 kDa
Gene ID:	54790
UniProt:	<a href="#">Q6N021</a>
Pathways:	<a href="#">Warburg Effect</a>

## Application Details

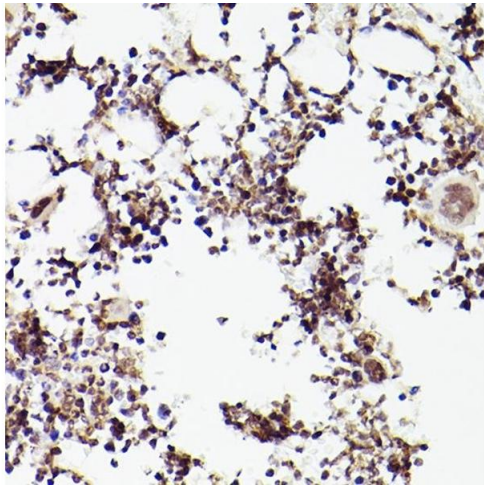
---

Application Notes:	WB,1:500 - 1:2000,IHC,1:50 - 1:100
Restrictions:	For Research Use only

## Handling

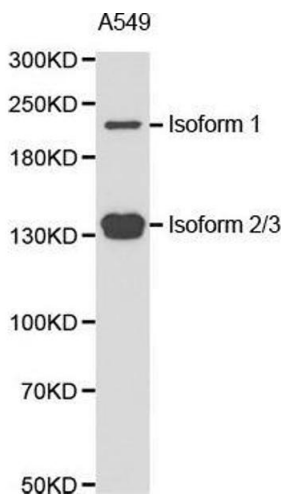
---

Format:	Liquid
Buffer:	PBS with 0.02 % sodium azide,50 % glycerol, pH 7.3.
Preservative:	Sodium azide
Precaution of Use:	This product contains Sodium azide: a POISONOUS AND HAZARDOUS SUBSTANCE which should be handled by trained staff only.
Handling Advice:	Avoid freeze / thaw cycles
Storage:	-20 °C
Storage Comment:	Store at -20°C. Avoid freeze / thaw cycles.



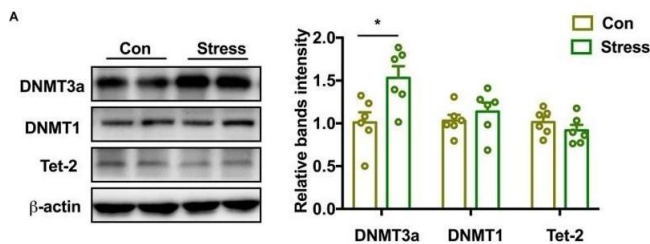
### Immunohistochemistry

**Image 1.** Immunohistochemistry of paraffin-embedded rat bone marrow using TET2 antibody (ABIN1513598, ABIN3022074, ABIN3022075 and ABIN6218597) at dilution of 1:100 (40x lens). Perform high pressure antigen retrieval with 10 mM citrate buffer pH 6.0 before commencing with IHC staining protocol.



### Western Blotting

**Image 2.** Western blot analysis of extracts of A549 cell line, using TET2 antibody.



### Western Blotting

**Image 3.** Effect of PS on DNMT and demethylase in adolescence. (A) DNMT3a protein expression was markedly upregulated (\*P < 0.05, n = 6) while DNMT1 level was marginally increased in PS females. No significant difference in Tet-2 expression was observed between PS and control females. (B) Tet-2 level was decreased in PS males (\*P < 0.05, n = 6), whereas DNMT3a and DNMT1 levels were similar in PS and control males. \*P < 0.05, \*P < 0.01 vs. corresponding control group. Data represent mean ± SEM. - figure provided by CiteAb. Source: PMID33192258

Please check the [product details page](#) for more images. Overall 5 images are available for ABIN1513598.