

Datasheet for ABIN1531170
anti-14-3-3 zeta antibody (pSer58)



[Go to Product page](#)

3 Images

Overview

Quantity:	100 µL
Target:	14-3-3 zeta (YWHAZ)
Binding Specificity:	AA 24-73, pSer58
Reactivity:	Human, Mouse, Rat
Host:	Rabbit
Clonality:	Polyclonal
Conjugate:	This 14-3-3 zeta antibody is un-conjugated
Application:	Western Blotting (WB), Immunohistochemistry (IHC), ELISA, Immunofluorescence (IF)

Product Details

Immunogen:	The antiserum was produced against synthesized peptide derived from human 14-3-3 zeta around the phosphorylation site of Ser58.
Isotype:	IgG
Specificity:	14-3-3 zeta (Phospho-Ser58) Antibody detects endogenous levels of 14-3-3 zeta only when phosphorylated at Ser58. PhosphorylationH:S58 M:S58 R:S58
Purification:	The antibody was purified from rabbit antiserum by affinity-chromatography using phospho peptide. The antibody against non-phospho peptide was removed by chromatography using corresponding non-phospho peptide.
Purity:	> 95 %

Target Details

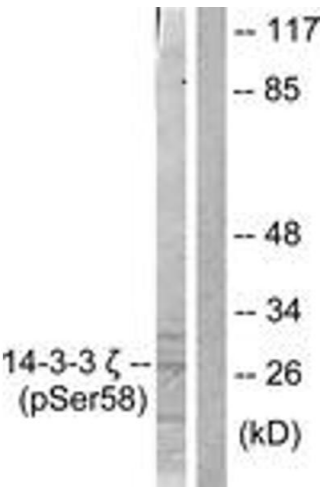
Target:	14-3-3 zeta (YWHAZ)
Alternative Name:	14-3-3 zeta (YWHAZ Products)
Background:	Synonyms: 14-3-3 protein zeta/delta, 1433Z, 143Z, FAS, Factor activating exoenzyme S, KCIP-1, Mitochondrial import stimulation factor S1 subunit, Protein kinase C inhibitor protein-1, YWHAZ NCBI Gene Symbol: YWHAZ
Molecular Weight:	27 kDa
Gene ID:	7534
OMIM:	601288
UniProt:	P63104
Pathways:	Apoptosis , Hormone Transport , Myometrial Relaxation and Contraction , Regulation of Leukocyte Mediated Immunity , Positive Regulation of Immune Effector Process , Synaptic Membrane , Production of Molecular Mediator of Immune Response , Maintenance of Protein Location

Application Details

Application Notes:	WB: 1:500~1:1000 IHC: 1:50~1:100 IF: 1:100~1:500 ELISA: 1:40000
Comment:	Unigene-Number: Hs.492407, Hs.594673 (NCBI Gene Symbol: YWHAZ)
Restrictions:	For Research Use only

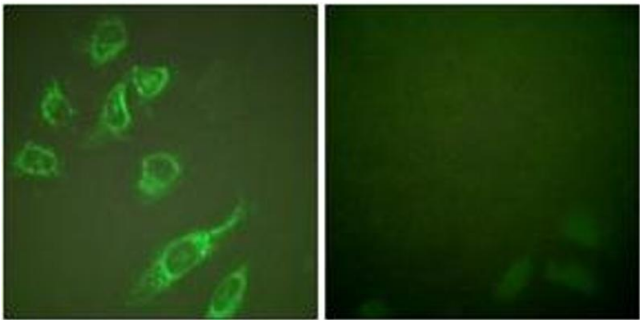
Handling

Format:	Liquid
Concentration:	1 mg/mL
Buffer:	phosphate buffered saline (without Mg ²⁺ and Ca ²⁺), pH 7.4, 150 mM NaCl, 0.02 % sodium azide and 50 % glycerol.
Preservative:	Sodium azide
Precaution of Use:	This product contains sodium azide: a POISONOUS AND HAZARDOUS SUBSTANCE which should be handled by trained staff only.
Storage:	-20 °C
Storage Comment:	Stable at -20°C for at least 1 year.



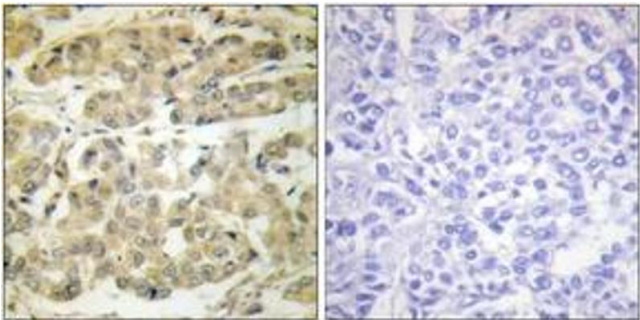
Western Blotting

Image 1. Western blot analysis of extracts from NIH-3T3 cells treated with UV 30', using 14-3-3 zeta (Phospho-Ser58) Antibody. The lane on the right is treated with the synthesized peptide.



Immunofluorescence

Image 2. Immunofluorescence analysis of HeLa cells treated with PMA 125ng/ml 30', using 14-3-3 zeta (Phospho-Ser58) Antibody. The picture on the right is treated with the synthesized peptide.



Immunohistochemistry

Image 3. Immunohistochemistry analysis of paraffin-embedded human breast carcinoma, using 14-3-3 zeta (Phospho-Ser58) Antibody. The picture on the right is treated with the synthesized peptide.