



[Go to Product page](#)

Datasheet for ABIN1531171

anti-alpha Adducin antibody (pSer726)

3 Images

Overview

Quantity:	100 µg
Target:	alpha Adducin (ADD1)
Binding Specificity:	AA 688-737, pSer726
Reactivity:	Human, Mouse, Rat
Host:	Rabbit
Clonality:	Polyclonal
Conjugate:	This alpha Adducin antibody is un-conjugated
Application:	Western Blotting (WB), Immunohistochemistry (IHC), ELISA, Immunofluorescence (IF)

Product Details

Immunogen:	The antiserum was produced against synthesized peptide derived from human ADD1 around the phosphorylation site of Ser726.
Isotype:	IgG
Specificity:	ADD1 (Phospho-Ser726) Antibody detects endogenous levels of ADD1 only when phosphorylated at Ser726. PhosphorylationH:S726/S713 M:S724/S712 R:S724/S712
Purification:	The antibody was purified from rabbit antiserum by affinity-chromatography using phospho peptide. The antibody against non-phospho peptide was removed by chromatography using corresponding non-phospho peptide.
Purity:	> 95 %

Target Details

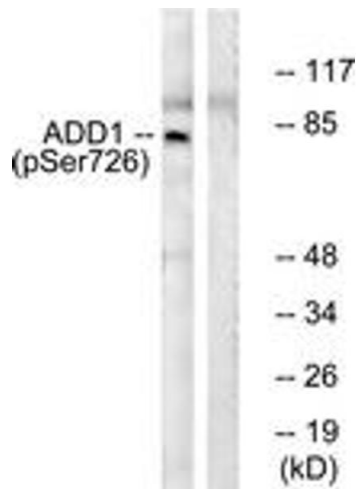
Target:	alpha Adducin (ADD1)
Alternative Name:	ADD1 (ADD1 Products)
Background:	Synonyms: Alpha-adducin, Erythrocyte adducin subunit alpha , ADD1 , ADDA NCBI Gene Symbol: ADD1
Molecular Weight:	80 kDa
Gene ID:	118, 119
OMIM:	102680
UniProt:	P35611 , P35612
Pathways:	Negative Regulation of Hormone Secretion , Regulation of Actin Filament Polymerization , Regulation of Lipid Metabolism by PPARalpha , ER-Nucleus Signaling

Application Details

Application Notes:	WB: 1:500~1:1000 IHC: 1:50~1:100 IF: 1:100~1:500 ELISA: 1:40000
Comment:	Unigene-Number: Hs.183706, Hs.701490, Hs.188528 (NCBI Gene Symbol: ADD1)
Restrictions:	For Research Use only

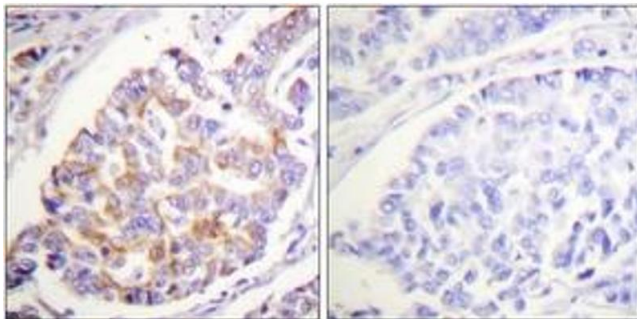
Handling

Format:	Liquid
Concentration:	1 mg/mL
Buffer:	phosphate buffered saline (without Mg ²⁺ and Ca ²⁺), pH 7.4, 150 mM NaCl, 0.02 % sodium azide and 50 % glycerol.
Preservative:	Sodium azide
Precaution of Use:	This product contains sodium azide: a POISONOUS AND HAZARDOUS SUBSTANCE which should be handled by trained staff only.
Storage:	-20 °C
Storage Comment:	Stable at -20°C for at least 1 year.
Expiry Date:	12 months



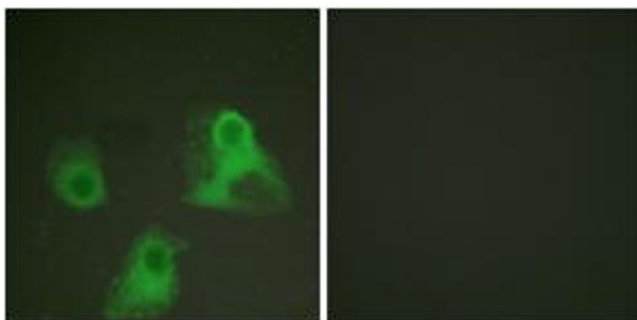
Western Blotting

Image 1. Western blot analysis of extracts from HeLa cells treated with Forskolin 40nM 30', using ADD1 (Phospho-Ser726) Antibody. The lane on the right is treated with the synthesized peptide.



Immunohistochemistry

Image 2. Immunohistochemistry analysis of paraffin-embedded human breast carcinoma, using ADD1 (Phospho-Ser726) Antibody. The picture on the right is treated with the synthesized peptide.



Immunofluorescence

Image 3. Immunofluorescence analysis of HeLa cells, using ADD1 (Phospho-Ser726) Antibody. The picture on the right is treated with the synthesized peptide.