

Datasheet for ABIN1531183
anti-NFKBIB antibody (pSer23)

3 Images

[Go to Product page](#)

Overview

Quantity:	100 µg
Target:	NFKBIB
Binding Specificity:	AA 8-57, pSer23
Reactivity:	Human, Mouse, Rat
Host:	Rabbit
Clonality:	Polyclonal
Conjugate:	This NFKBIB antibody is un-conjugated
Application:	Western Blotting (WB), ELISA, Immunohistochemistry (IHC), Immunofluorescence (IF)

Product Details

Immunogen:	The antiserum was produced against synthesized peptide derived from human IkappaB-beta around the phosphorylation site of Ser23.
Isotype:	IgG
Specificity:	IkappaB-beta (Phospho-Ser23) Antibody detects endogenous levels of IkappaB-beta only when phosphorylated at Ser23. PhosphorylationH:S23 M:S23 R:S23
Purification:	The antibody was purified from rabbit antiserum by affinity-chromatography using phospho peptide. The antibody against non-phospho peptide was removed by chromatography using corresponding non-phospho peptide.
Purity:	> 95 %

Target Details

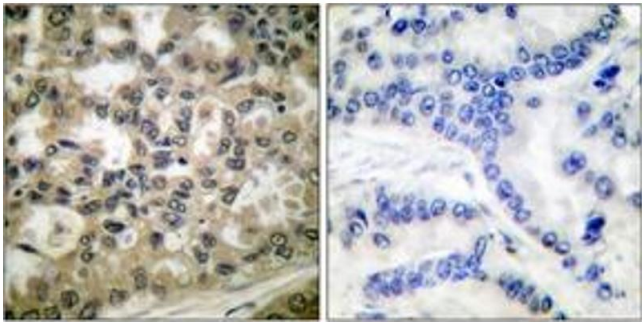
Target:	NFKBIB
Abstract:	NFKBIB Products
Background:	Synonyms: I-kappa-B-beta, IKB-B, IKBB, IkappaBbeta, NF-kappa-BIB, NF-kappaB inhibitor beta, NFKBIB, TR- interacting protein 9, TRIP9, Thyroid receptor interacting protein 9 NCBI Gene Symbol: NFKBIB
Molecular Weight:	37 kDa
Gene ID:	4793
OMIM:	604495
UniProt:	Q15653
Pathways:	NF-kappaB Signaling , Activation of Innate immune Response , Maintenance of Protein Location , Toll-Like Receptors Cascades

Application Details

Application Notes:	WB: 1:500~1:1000 IHC: 1:50~1:100 IF: 1:100~1:500 ELISA: 1:40000
Comment:	Unigene-Number: Hs.9731 (NCBI Gene Symbol: NFKBIB)
Restrictions:	For Research Use only

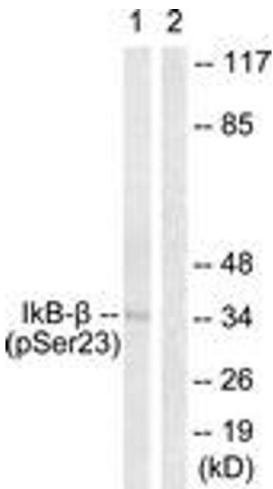
Handling

Format:	Liquid
Concentration:	1 mg/mL
Buffer:	phosphate buffered saline (without Mg2+ and Ca2+), pH 7.4, 150 mM NaCl, 0.02 % sodium azide and 50 % glycerol.
Preservative:	Sodium azide
Precaution of Use:	This product contains sodium azide: a POISONOUS AND HAZARDOUS SUBSTANCE which should be handled by trained staff only.
Storage:	-20 °C
Storage Comment:	Stable at -20°C for at least 1 year.
Expiry Date:	12 months



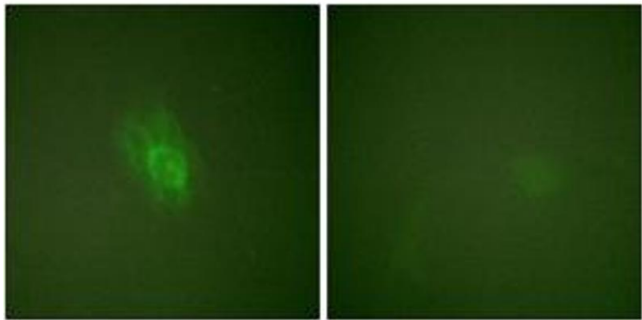
Immunohistochemistry

Image 1. Immunohistochemistry analysis of paraffin-embedded human lung carcinoma, using IκappaB-beta (Phospho-Ser23) Antibody. The picture on the right is treated with the synthesized peptide.



Western Blotting

Image 2. Western blot analysis of extracts from HeLa cells treated with TNF-α 20ng/ml 5', using IκappaB-beta (Phospho-Ser23) Antibody. The lane on the right is treated with the synthesized peptide.



Immunofluorescence

Image 3. Immunofluorescence analysis of HeLa cells treated with TNF-α 20nM 15', using IκappaB-beta (Phospho-Ser23) Antibody. The picture on the right is treated with the synthesized peptide.