



[Go to Product page](#)

Datasheet for ABIN1531184

## anti-IkappaB-epsilon antibody (pSer22)

### 3 Images

#### Overview

Quantity:	100 µg
Target:	IkappaB-epsilon
Binding Specificity:	AA 131-180, pSer22
Reactivity:	Human, Mouse, Rat
Host:	Rabbit
Clonality:	Polyclonal
Conjugate:	This IkappaB-epsilon antibody is un-conjugated
Application:	Immunofluorescence (IF), ELISA, Western Blotting (WB), Immunohistochemistry (IHC)

#### Product Details

Immunogen:	The antiserum was produced against synthesized peptide derived from human IkappaB-epsilon around the phosphorylation site of Ser22.
Isotype:	IgG
Specificity:	IkappaB-epsilon (Phospho-Ser22) Antibody detects endogenous levels of IkappaB-epsilon only when phosphorylated at Ser22. PhosphorylationH:S22 M:S22 R:S22
Purification:	The antibody was purified from rabbit antiserum by affinity-chromatography using phospho peptide. The antibody against non-phospho peptide was removed by chromatography using corresponding non-phospho peptide.
Purity:	> 95 %

## Target Details

---

Target:	IkappaB-epsilon
Abstract:	<a href="#">IkappaB-epsilon Products</a>
Background:	Synonyms: I-kappa-B-epsilon, IKBE, IkappaBepsilon, NF-kappa-BIE, NF-kappaB inhibitor epsilon, NFKBIE NCBI Gene Symbol: NFKBIE
Molecular Weight:	38 kDa
Gene ID:	4794
OMIM:	604548
UniProt:	<a href="#">O00221</a>

## Application Details

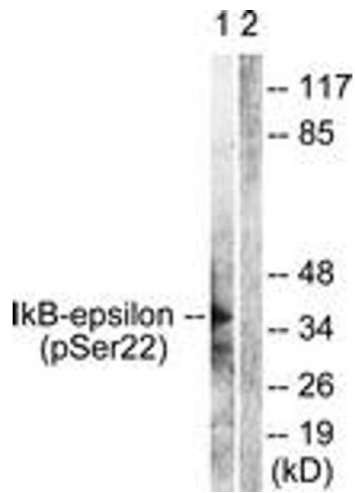
---

Application Notes:	WB: 1:500~1:1000 IHC: 1:50~1:100 IF: 1:100~1:500 ELISA: 1:40000
Comment:	Unigene-Number: Hs.458276 (NCBI Gene Symbol: NFKBIE)
Restrictions:	For Research Use only

## Handling

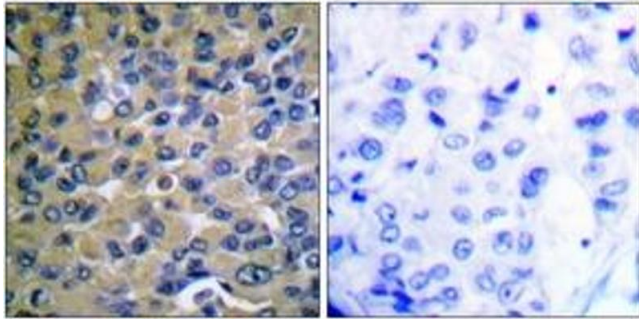
---

Format:	Liquid
Concentration:	1 mg/mL
Buffer:	phosphate buffered saline (without Mg <sup>2+</sup> and Ca <sup>2+</sup> ), pH 7.4, 150 mM NaCl, 0.02 % sodium azide and 50 % glycerol.
Preservative:	Sodium azide
Precaution of Use:	This product contains sodium azide: a POISONOUS AND HAZARDOUS SUBSTANCE which should be handled by trained staff only.
Storage:	-20 °C
Storage Comment:	Stable at -20°C for at least 1 year.
Expiry Date:	12 months



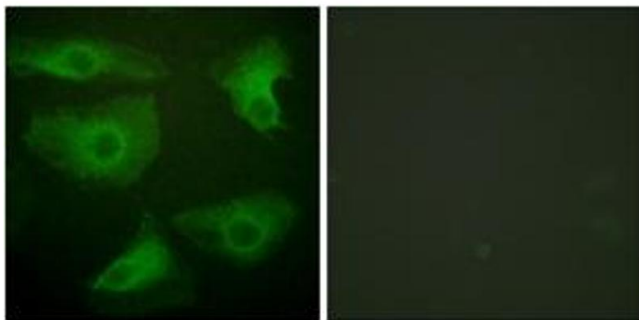
### Western Blotting

**Image 1.** Western blot analysis of extracts from Jurkat cells treated with TNF- $\alpha$  20ng/ml 30', using IkappaB-epsilon (Phospho-Ser22) Antibody. The lane on the right is treated with the synthesized peptide.



### Immunohistochemistry

**Image 2.** Immunohistochemistry analysis of paraffin-embedded human breast carcinoma, using IkappaB-epsilon (Phospho-Ser22) Antibody. The picture on the right is treated with the synthesized peptide.



### Immunofluorescence

**Image 3.** Immunofluorescence analysis of HeLa cells, using IkappaB-epsilon (Phospho-Ser22) Antibody. The picture on the right is treated with the synthesized peptide.