

Datasheet for ABIN1531188
anti-MEF2A antibody (pSer408)



[Go to Product page](#)

3 Images

Overview

Quantity:	100 µL
Target:	MEF2A
Binding Specificity:	AA 374-423, pSer408
Reactivity:	Human, Mouse, Rat
Host:	Rabbit
Clonality:	Polyclonal
Conjugate:	This MEF2A antibody is un-conjugated
Application:	Western Blotting (WB), Immunohistochemistry (IHC), ELISA, Immunofluorescence (IF)

Product Details

Immunogen:	The antiserum was produced against synthesized peptide derived from human MEF2A around the phosphorylation site of Ser408.
Isotype:	IgG
Specificity:	MEF2A (Phospho-Ser408) Antibody detects endogenous levels of MEF2A only when phosphorylated at Ser408. PhosphorylationH:S408 M:S406 R:S400
Purification:	The antibody was purified from rabbit antiserum by affinity-chromatography using phospho peptide. The antibody against non-phospho peptide was removed by chromatography using corresponding non-phospho peptide.
Purity:	> 95 %

Target Details

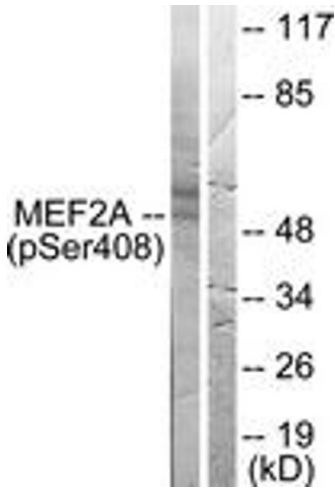
Target:	MEF2A
Alternative Name:	MEF2A (MEF2A Products)
Background:	Synonyms: MEF2, Myocyte-specific enhancer factor 2A, Serum response factor-like protein 1 NCBI Gene Symbol: MEF2A
Molecular Weight:	54 kDa
Gene ID:	4205
OMIM:	600660
UniProt:	Q02078
Pathways:	Neurotrophin Signaling Pathway , Activation of Innate immune Response , Carbohydrate Homeostasis , Chromatin Binding , Regulation of Muscle Cell Differentiation , Toll-Like Receptors Cascades

Application Details

Application Notes:	WB: 1:500~1:1000 IHC: 1:50~1:100 IF: 1:100~1:500 ELISA: 1:40000
Comment:	Unigene-Number: Hs.268675 (NCBI Gene Symbol: MEF2A)
Restrictions:	For Research Use only

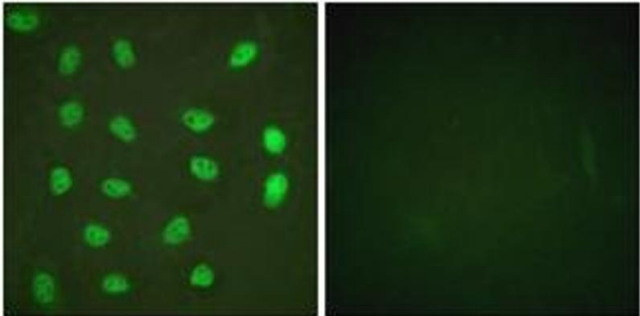
Handling

Format:	Liquid
Concentration:	1 mg/mL
Buffer:	phosphate buffered saline (without Mg2+ and Ca2+), pH 7.4, 150 mM NaCl, 0.02 % sodium azide and 50 % glycerol.
Preservative:	Sodium azide
Precaution of Use:	This product contains sodium azide: a POISONOUS AND HAZARDOUS SUBSTANCE which should be handled by trained staff only.
Storage:	-20 °C
Storage Comment:	Stable at -20°C for at least 1 year.
Expiry Date:	12 months



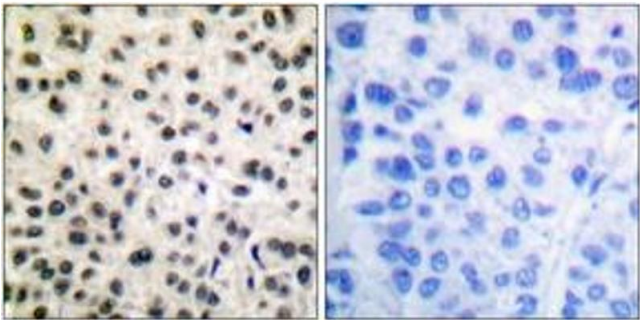
Western Blotting

Image 1. Western blot analysis of extracts from HeLa cells treated with PMA 125ng/ml 30', using MEF2A (Phospho-Ser408) Antibody. The lane on the right is treated with the synthesized peptide.



Immunofluorescence

Image 2. Immunofluorescence analysis of HeLa cells treated with PMA 125ng/ml 30', using MEF2A (Phospho-Ser408) Antibody. The picture on the right is treated with the synthesized peptide.



Immunohistochemistry

Image 3. Immunohistochemistry analysis of paraffin-embedded human breast carcinoma, using MEF2A (Phospho-Ser408) Antibody. The picture on the right is treated with the synthesized peptide.