



[Go to Product page](#)

Datasheet for ABIN1531192
anti-PKC zeta antibody (pThr410)

3 Images

Overview

Quantity:	100 µL
Target:	PKC zeta (PRKCZ)
Binding Specificity:	AA 376-425, pThr410
Reactivity:	Human, Mouse, Rat
Host:	Rabbit
Clonality:	Polyclonal
Conjugate:	This PKC zeta antibody is un-conjugated
Application:	Western Blotting (WB), ELISA, Immunohistochemistry (IHC), Immunofluorescence (IF)

Product Details

Immunogen:	The antiserum was produced against synthesized peptide derived from human PKC zeta around the phosphorylation site of Thr410.
Isotype:	IgG
Specificity:	PKC zeta (Phospho-Thr410) Antibody detects endogenous levels of PKC zeta only when phosphorylated at Thr410. PhosphorylationH:T410 M:T410 R:T410
Purification:	The antibody was purified from rabbit antiserum by affinity-chromatography using phospho peptide. The antibody against non-phospho peptide was removed by chromatography using corresponding non-phospho peptide.
Purity:	> 95 %

Target Details

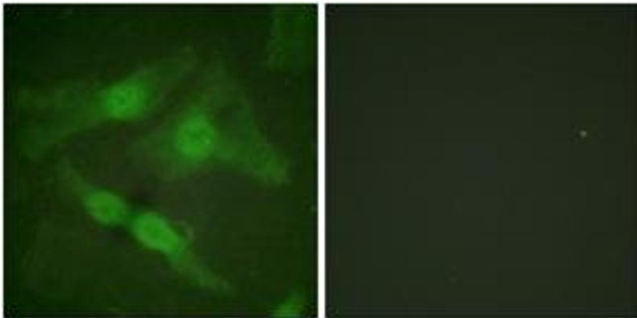
Target:	PKC zeta (PRKCZ)
Alternative Name:	PKC zeta (PRKCZ Products)
Background:	Synonyms: KPCZ, PKC-zeta, PKC2, PRKCZ, Protein kinase C zeta type, kinase PKC-zeta, nPKC-zeta NCBI Gene Symbol: PRKCZ
Molecular Weight:	67 kDa
Gene ID:	5590
OMIM:	176982
UniProt:	Q05513
Pathways:	NF-kappaB Signaling , RTK Signaling , Myometrial Relaxation and Contraction , Regulation of Leukocyte Mediated Immunity , Positive Regulation of Immune Effector Process , Synaptic Membrane , Production of Molecular Mediator of Immune Response , CXCR4-mediated Signaling Events , Thromboxane A2 Receptor Signaling

Application Details

Application Notes:	WB: 1:500~1:1000 IHC: 1:50~1:100 IF: 1:100~1:500 ELISA: 1:20000
Comment:	Unigene-Number: Hs.496255 (NCBI Gene Symbol: PRKCZ)
Restrictions:	For Research Use only

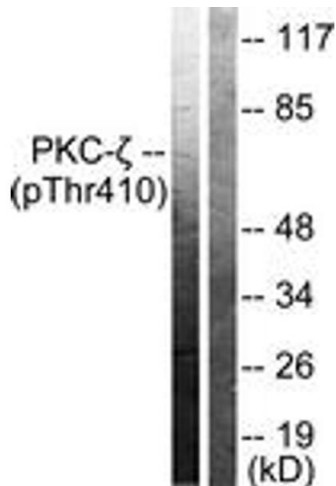
Handling

Format:	Liquid
Concentration:	1 mg/mL
Buffer:	phosphate buffered saline (without Mg ²⁺ and Ca ²⁺), pH 7.4, 150 mM NaCl, 0.02 % sodium azide and 50 % glycerol.
Preservative:	Sodium azide
Precaution of Use:	This product contains sodium azide: a POISONOUS AND HAZARDOUS SUBSTANCE which should be handled by trained staff only.
Storage:	-20 °C
Storage Comment:	Stable at -20°C for at least 1 year.



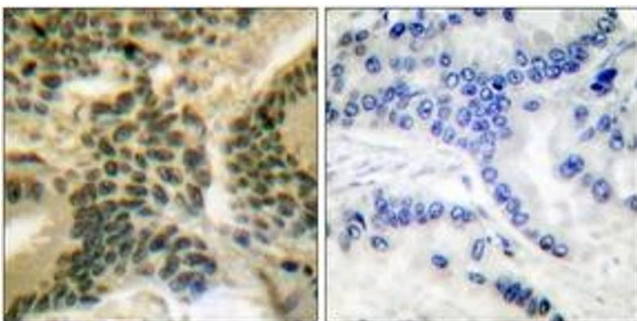
Immunofluorescence

Image 1. Immunofluorescence analysis of HeLa cells, using PKC zeta (Phospho-Thr410) Antibody. The picture on the right is treated with the synthesized peptide.



Western Blotting

Image 2. Western blot analysis of extracts from NIH-3T3 cells treated with PMA 125ng/ml 30', using PKC zeta (Phospho-Thr410) Antibody. The lane on the right is treated with the synthesized peptide.



Immunohistochemistry

Image 3. Immunohistochemistry analysis of paraffin-embedded human lung carcinoma, using PKC zeta (Phospho-Thr410) Antibody. The picture on the right is treated with the synthesized peptide.