



Datasheet for ABIN1531201

## anti-Synaptotagmin antibody (pSer309)



[Go to Product page](#)

### 2 Images

#### Overview

Quantity:	100 µg
Target:	Synaptotagmin (SYT)
Binding Specificity:	AA 276-325, pSer309
Reactivity:	Rat, Mouse, Human
Host:	Rabbit
Clonality:	Polyclonal
Conjugate:	This Synaptotagmin antibody is un-conjugated
Application:	Western Blotting (WB), Immunohistochemistry (IHC), ELISA

#### Product Details

Immunogen:	The antiserum was produced against synthesized peptide derived from human Synaptotagmin around the phosphorylation site of Ser309.
Isotype:	IgG
Specificity:	Synaptotagmin (Phospho-Ser309) Antibody detects endogenous levels of Synaptotagmin only when phosphorylated at Ser309. PhosphorylationH:S309/306 M:S308/309 R:S308/309
Purification:	The antibody was purified from rabbit antiserum by affinity-chromatography using phospho peptide. The antibody against non-phospho peptide was removed by chromatography using corresponding non-phospho peptide.
Purity:	> 95 %

## Target Details

---

Target:	Synaptotagmin (SYT)
Alternative Name:	Synaptotagmin ( <a href="#">SYT Products</a> )
Background:	Synonyms: Synaptotagmin-1, Synaptotagmin I, SytI, p65, SYT1, SVP65, SYT NCBI Gene Symbol: SYT1
Molecular Weight:	47 kDa
Gene ID:	6857, 127833
OMIM:	185605
UniProt:	<a href="#">P21579</a> , <a href="#">Q8N9I0</a>

## Application Details

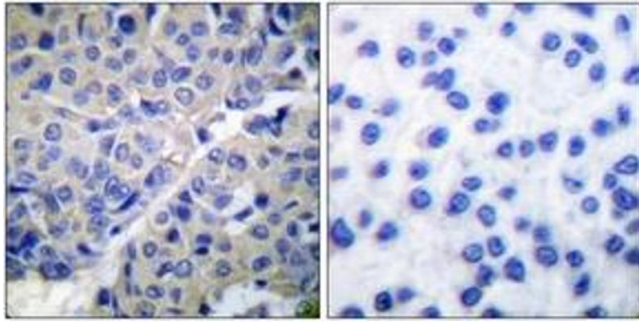
---

Application Notes:	WB: 1:500~1:1000 IHC: 1:50~1:100 ELISA: 1:10000
Comment:	Unigene-Number: Hs.310545, Hs.585015 (NCBI Gene Symbol: SYT1)
Restrictions:	For Research Use only

## Handling

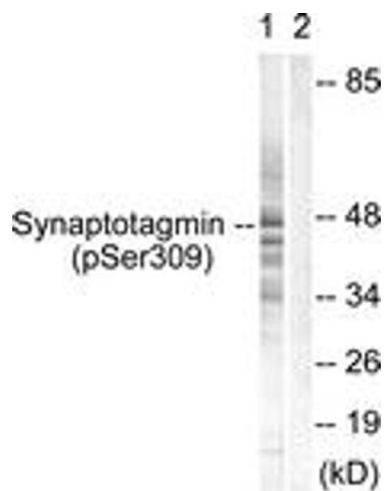
---

Format:	Liquid
Concentration:	1 mg/mL
Buffer:	phosphate buffered saline (without Mg <sup>2+</sup> and Ca <sup>2+</sup> ), pH 7.4, 150 mM NaCl, 0.02 % sodium azide and 50 % glycerol.
Preservative:	Sodium azide
Precaution of Use:	This product contains sodium azide: a POISONOUS AND HAZARDOUS SUBSTANCE which should be handled by trained staff only.
Storage:	-20 °C
Storage Comment:	Stable at -20°C for at least 1 year.
Expiry Date:	12 months



### Immunohistochemistry

**Image 1.** Immunohistochemistry analysis of paraffin-embedded human breast carcinoma, using Synaptotagmin (Phospho-Ser309) Antibody. The picture on the right is treated with the synthesized peptide.



### Western Blotting

**Image 2.** Western blot analysis of extracts from 293 cells treated with Sobital 0.4M 30', using Synaptotagmin (Phospho-Ser309) Antibody. The lane on the right is treated with the synthesized peptide.