



[Go to Product page](#)

Datasheet for ABIN1531208

anti-Acetyl-CoA Carboxylase antibody (pSer80)

2 Images

Overview

Quantity:	100 µg
Target:	Acetyl-CoA Carboxylase
Binding Specificity:	AA 46-95, pSer80
Reactivity:	Human, Rat, Mouse
Host:	Rabbit
Clonality:	Polyclonal
Conjugate:	This Acetyl-CoA Carboxylase antibody is un-conjugated
Application:	Western Blotting (WB), Immunohistochemistry (IHC), ELISA

Product Details

Immunogen:	The antiserum was produced against synthesized peptide derived from human Acetyl-CoA Carboxylase around the phosphorylation site of Ser80.
Isotype:	IgG
Specificity:	Acetyl-CoA Carboxylase (Phospho-Ser80) Antibody detects endogenous levels of Acetyl-CoA Carboxylase only when phosphorylated at Ser80. PhosphorylationH:S80 M:S79 R:S79
Purification:	The antibody was purified from rabbit antiserum by affinity-chromatography using phospho peptide. The antibody against non-phospho peptide was removed by chromatography using corresponding non-phospho peptide.
Purity:	> 95 %

Target Details

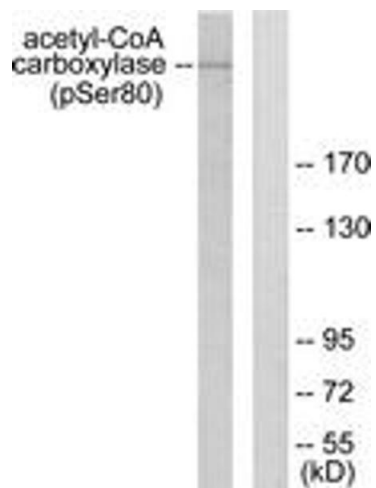
Target:	Acetyl-CoA Carboxylase
Abstract:	Acetyl-CoA Carboxylase Products
Background:	Synonyms: ACAC, ACACA, ACC-alpha, ACCA, Acetyl-CoA carboxylase 1, NCBI Gene Symbol: ACACA
Molecular Weight:	265 kDa
Gene ID:	31
OMIM:	200350
UniProt:	Q13085

Application Details

Application Notes:	WB: 1:500~1:1000 IHC: 1:50~1:100 ELISA: 1:1000
Comment:	Unigene-Number: Hs.160556 (NCBI Gene Symbol: ACACA)
Restrictions:	For Research Use only

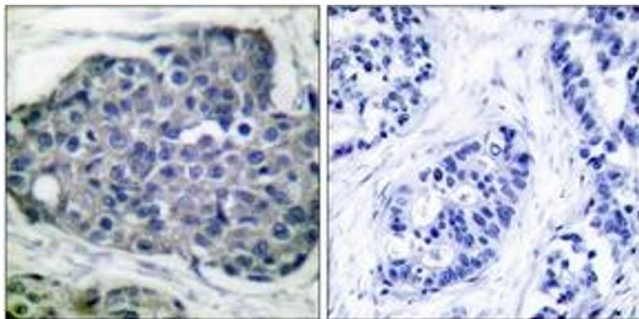
Handling

Format:	Liquid
Concentration:	1 mg/mL
Buffer:	phosphate buffered saline (without Mg ²⁺ and Ca ²⁺), pH 7.4, 150 mM NaCl, 0.02 % sodium azide and 50 % glycerol.
Preservative:	Sodium azide
Precaution of Use:	This product contains sodium azide: a POISONOUS AND HAZARDOUS SUBSTANCE which should be handled by trained staff only.
Storage:	-20 °C
Storage Comment:	Stable at -20°C for at least 1 year.
Expiry Date:	12 months



Western Blotting

Image 1. Western blot analysis of extracts from 293 cells treated with EGF 200ng/ml 5', using Acetyl-CoA Carboxylase (Phospho-Ser80) Antibody. The lane on the right is treated with the synthesized peptide.



Immunohistochemistry

Image 2. Immunohistochemistry analysis of paraffin-embedded human breast carcinoma, using Acetyl-CoA Carboxylase (Phospho-Ser80) Antibody. The picture on the right is treated with the synthesized peptide.