

Datasheet for ABIN1531213
anti-CEBPB antibody (pThr235)

3 Images

[Go to Product page](#)

Overview

Quantity:	100 µg
Target:	CEBPB
Binding Specificity:	AA 201-250, pThr235
Reactivity:	Human, Mouse, Rat
Host:	Rabbit
Clonality:	Polyclonal
Conjugate:	This CEBPB antibody is un-conjugated
Application:	Western Blotting (WB), ELISA, Immunohistochemistry (IHC), Immunofluorescence (IF)

Product Details

Immunogen:	The antiserum was produced against synthesized peptide derived from human C/EBP-beta around the phosphorylation site of Thr235/188.
Isotype:	IgG
Specificity:	C/EBP-beta (Phospho-Thr235/188) Antibody detects endogenous levels of C/EBP-beta only when phosphorylated at Thr235/188. PhosphorylationH:T235 M:T188 R:T189
Purification:	The antibody was purified from rabbit antiserum by affinity-chromatography using phospho peptide. The antibody against non-phospho peptide was removed by chromatography using corresponding non-phospho peptide.
Purity:	> 95 %

Target Details

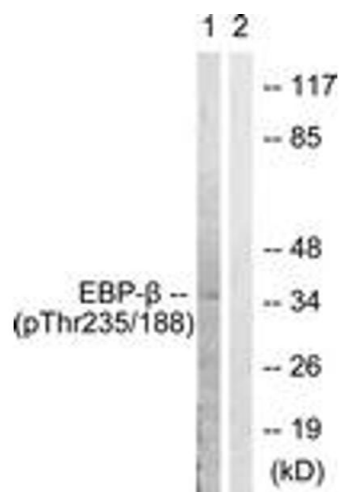
Target:	CEBPB
Alternative Name:	C/EBP-beta (CEBPB Products)
Background:	Synonyms: AGP/EBP, C/EBP beta, C/EBP-related protein 2, CCAAT/enhancer binding protein beta, CEBPB, CRP2, IL-6DBP, Interleukin-6- dependent binding protein, LAP, Liver-enriched transcriptional activator, Nuclear factor NF-IL6, SF-B, SFB, Silencer factor B, TCF5, Tr NCBI Gene Symbol: CEBPB
Molecular Weight:	36 kDa
Gene ID:	1051
OMIM:	189965
UniProt:	P17676
Pathways:	Interferon-gamma Pathway , Autophagy , Brown Fat Cell Differentiation

Application Details

Application Notes:	WB: 1:500~1:1000 IHC: 1:50~1:100 IF: 1:100~1:500 ELISA: 1:10000
Comment:	Unigene-Number: Hs.517106, Hs.701858, Hs.712709 (NCBI Gene Symbol: CEBPB)
Restrictions:	For Research Use only

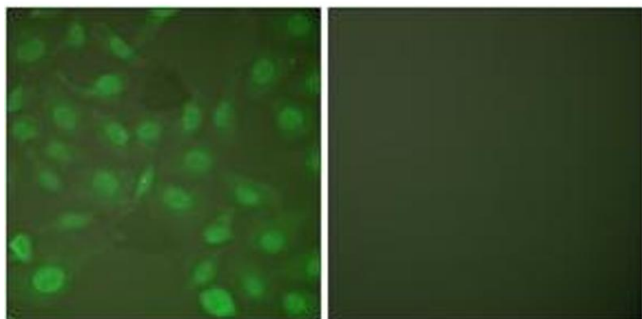
Handling

Format:	Liquid
Concentration:	1 mg/mL
Buffer:	phosphate buffered saline (without Mg ²⁺ and Ca ²⁺), pH 7.4, 150 mM NaCl, 0.02 % sodium azide and 50 % glycerol.
Preservative:	Sodium azide
Precaution of Use:	This product contains sodium azide: a POISONOUS AND HAZARDOUS SUBSTANCE which should be handled by trained staff only.
Storage:	-20 °C
Storage Comment:	Stable at -20°C for at least 1 year.
Expiry Date:	12 months



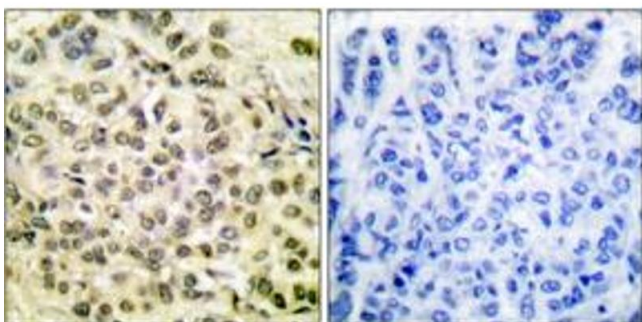
Western Blotting

Image 1. Western blot analysis of extracts from HepG2 cells treated with EGF 200ng/ml 30', using C/EBP-beta (Phospho-Thr235/188) Antibody. The lane on the right is treated with the synthesized peptide.



Immunofluorescence

Image 2. Immunofluorescence analysis of HepG2 cells, using C/EBP-beta (Phospho-Thr235/188) Antibody. The picture on the right is treated with the synthesized peptide.



Immunohistochemistry

Image 3. Immunohistochemistry analysis of paraffin-embedded human breast carcinoma, using C/EBP-beta (Phospho-Thr235/188) Antibody. The picture on the right is treated with the synthesized peptide.