

Datasheet for ABIN1531220  
**anti-CROT antibody (pThr290)**

## 3 Images

[Go to Product page](#)

## Overview

Quantity:	100 µg
Target:	CROT
Binding Specificity:	AA 256-305, pThr290
Reactivity:	Human, Mouse, Rat
Host:	Rabbit
Clonality:	Polyclonal
Conjugate:	This CROT antibody is un-conjugated
Application:	Western Blotting (WB), ELISA, Immunohistochemistry (IHC), Immunofluorescence (IF)

## Product Details

Immunogen:	The antiserum was produced against synthesized peptide derived from human COT around the phosphorylation site of Thr290.
Isotype:	IgG
Specificity:	COT (Phospho-Thr290) Antibody detects endogenous levels of COT only when phosphorylated at Thr290. PhosphorylationH:T290 M:T290 R:T290
Purification:	The antibody was purified from rabbit antiserum by affinity-chromatography using phospho peptide. The antibody against non-phospho peptide was removed by chromatography using corresponding non-phospho peptide.
Purity:	> 95 %

## Target Details

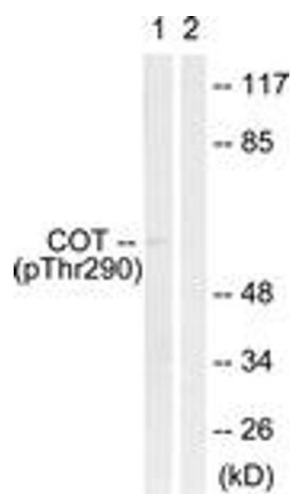
Target:	CROT
Alternative Name:	COT ( <a href="#">CROT Products</a> )
Background:	Synonyms: C-COT, COT proto-oncogene serine/threonine-protein kinase, Cancer Osaka thyroid oncogene, M3K8, MAP3K8, Mitogen-activated protein kinase kinase kinase 8, TPL-2, TPL2, Tpl2, Tumor progression locus 2, kinase Cot NCBI Gene Symbol: MAP3K8
Molecular Weight:	52 kDa
Gene ID:	1326
OMIM:	191195
UniProt:	<a href="#">P41279</a>
Pathways:	<a href="#">Monocarboxylic Acid Catabolic Process</a>

## Application Details

Application Notes:	WB: 1:500~1:1000 IHC: 1:50~1:100 IF: 1:100~1:500 ELISA: 1:40000
Comment:	Unigene-Number: Hs.432453 (NCBI Gene Symbol: MAP3K8)
Restrictions:	For Research Use only

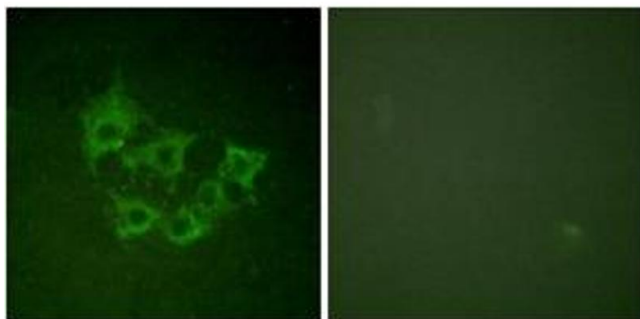
## Handling

Format:	Liquid
Concentration:	1 mg/mL
Buffer:	phosphate buffered saline (without Mg <sup>2+</sup> and Ca <sup>2+</sup> ), pH 7.4, 150 mM NaCl, 0.02 % sodium azide and 50 % glycerol.
Preservative:	Sodium azide
Precaution of Use:	This product contains sodium azide: a POISONOUS AND HAZARDOUS SUBSTANCE which should be handled by trained staff only.
Storage:	-20 °C
Storage Comment:	Stable at -20°C for at least 1 year.
Expiry Date:	12 months



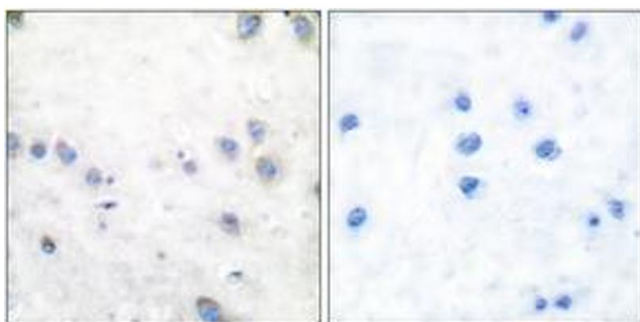
### Western Blotting

**Image 1.** Western blot analysis of extracts from 293 cells treated with UV 15', using COT (Phospho-Thr290) Antibody. The lane on the right is treated with the synthesized peptide.



### Immunofluorescence

**Image 2.** Immunofluorescence analysis of HuvEc cells, using COT (Phospho-Thr290) Antibody. The picture on the right is treated with the synthesized peptide.



### Immunohistochemistry

**Image 3.** Immunohistochemistry analysis of paraffin-embedded human brain, using COT (Phospho-Thr290) Antibody. The picture on the right is treated with the synthesized peptide.