

Datasheet for ABIN1531223
anti-CrkL antibody (pTyr207)

3 Images

[Go to Product page](#)

Overview

Quantity:	100 µg
Target:	CrkL (CRKL)
Binding Specificity:	AA 173-222, pTyr207
Reactivity:	Human, Mouse, Rat
Host:	Rabbit
Clonality:	Polyclonal
Conjugate:	This CrkL antibody is un-conjugated
Application:	Western Blotting (WB), ELISA, Immunohistochemistry (IHC), Immunofluorescence (IF)

Product Details

Immunogen:	The antiserum was produced against synthesized peptide derived from human CrkL around the phosphorylation site of Tyr207.
Isotype:	IgG
Specificity:	CrkL (Phospho-Tyr207) Antibody detects endogenous levels of CrkL only when phosphorylated at Tyr207. PhosphorylationH:Y207 M:Y207 R:Y207
Purification:	The antibody was purified from rabbit antiserum by affinity-chromatography using phospho peptide. The antibody against non-phospho peptide was removed by chromatography using corresponding non-phospho peptide.
Purity:	> 95 %

Target Details

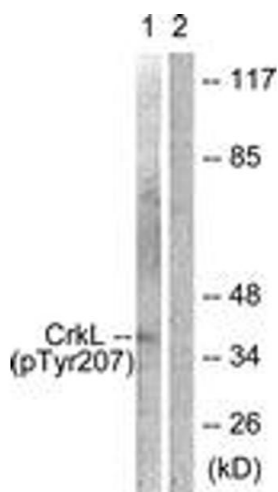
Target:	CrkL (CRKL)
Alternative Name:	CrkL (CRKL Products)
Background:	Synonyms: CRKOL, Crk-like protein NCBI Gene Symbol: CRKL
Molecular Weight:	33 kDa
Gene ID:	1399
OMIM:	602007
UniProt:	P46109
Pathways:	Interferon-gamma Pathway , Neurotrophin Signaling Pathway , Signaling of Hepatocyte Growth Factor Receptor

Application Details

Application Notes:	WB: 1:500~1:1000 IHC: 1:50~1:100 IF: 1:100~1:500 ELISA: 1:5000
Comment:	Unigene-Number: Hs.592205 (NCBI Gene Symbol: CRKL)
Restrictions:	For Research Use only

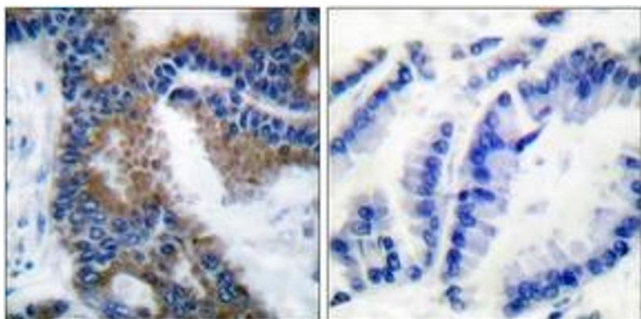
Handling

Format:	Liquid
Concentration:	1 mg/mL
Buffer:	phosphate buffered saline (without Mg ²⁺ and Ca ²⁺), pH 7.4, 150 mM NaCl, 0.02 % sodium azide and 50 % glycerol.
Preservative:	Sodium azide
Precaution of Use:	This product contains sodium azide: a POISONOUS AND HAZARDOUS SUBSTANCE which should be handled by trained staff only.
Storage:	-20 °C
Storage Comment:	Stable at -20°C for at least 1 year.
Expiry Date:	12 months



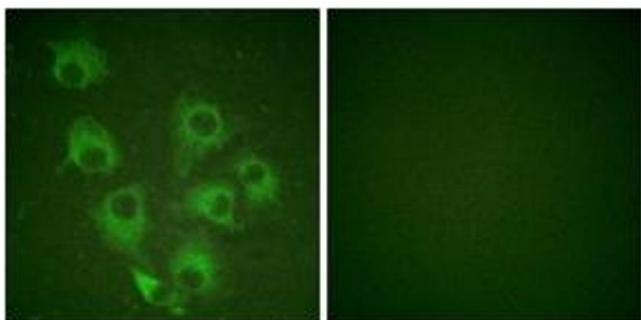
Western Blotting

Image 1. Western blot analysis of extracts from COS7 cells, using CrkL (Phospho-Tyr207) Antibody. The lane on the right is treated with the synthesized peptide.



Immunohistochemistry

Image 2. Immunohistochemistry analysis of paraffin-embedded human lung carcinoma, using CrkL (Phospho-Tyr207) Antibody. The picture on the right is treated with the synthesized peptide.



Immunofluorescence

Image 3. Immunofluorescence analysis of HuvEc cells, using CrkL (Phospho-Tyr207) Antibody. The picture on the right is treated with the synthesized peptide.