



Datasheet for ABIN1531230
anti-LIPE antibody (pSer855)



[Go to Product page](#)

2 Images

Overview

Quantity:	100 µg
Target:	LIPE
Binding Specificity:	AA 520-569, pSer855
Reactivity:	Human, Mouse, Rat
Host:	Rabbit
Clonality:	Polyclonal
Conjugate:	This LIPE antibody is un-conjugated
Application:	Western Blotting (WB), ELISA, Immunohistochemistry (IHC)

Product Details

Immunogen:	The antiserum was produced against synthesized peptide derived from human HSL around the phosphorylation site of Ser855/554.
Isotype:	IgG
Specificity:	HSL (Phospho-Ser855/554) Antibody detects endogenous levels of HSL only when phosphorylated at Ser855/554. PhosphorylationH:S855 M:S559 R:S865
Purification:	The antibody was purified from rabbit antiserum by affinity-chromatography using phospho peptide. The antibody against non-phospho peptide was removed by chromatography using corresponding non-phospho peptide.
Purity:	> 95 %

Target Details

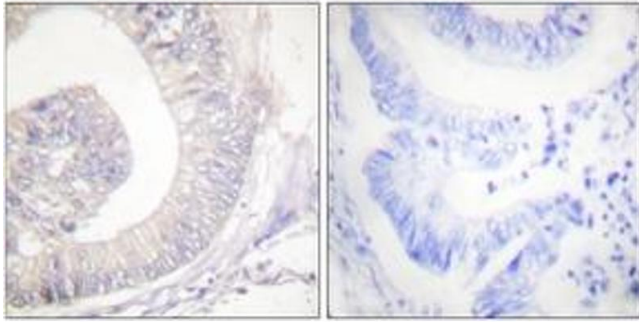
Target:	LIPE
Alternative Name:	HSL (LIPE Products)
Background:	Synonyms: Hormone sensitive lipase, LIPE, LIPS NCBI Gene Symbol: LIPE
Molecular Weight:	116 kDa
Gene ID:	3991
OMIM:	151750
UniProt:	Q05469
Pathways:	AMPK Signaling , Monocarboxylic Acid Catabolic Process , Lipid Metabolism

Application Details

Application Notes:	WB: 1:500~1:1000 IHC: 1:50~1:100 ELISA: 1:20000
Comment:	Unigene-Number: Hs.656980 (NCBI Gene Symbol: LIPE)
Restrictions:	For Research Use only

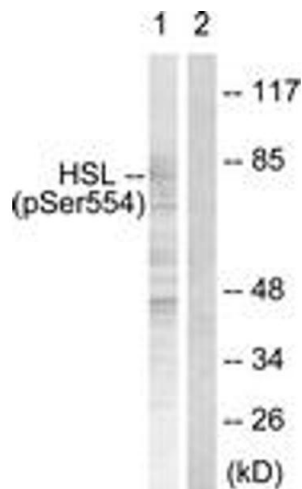
Handling

Format:	Liquid
Concentration:	1 mg/mL
Buffer:	phosphate buffered saline (without Mg ²⁺ and Ca ²⁺), pH 7.4, 150 mM NaCl, 0.02 % sodium azide and 50 % glycerol.
Preservative:	Sodium azide
Precaution of Use:	This product contains sodium azide: a POISONOUS AND HAZARDOUS SUBSTANCE which should be handled by trained staff only.
Storage:	-20 °C
Storage Comment:	Stable at -20°C for at least 1 year.
Expiry Date:	12 months



Immunohistochemistry

Image 1. Immunohistochemistry analysis of paraffin-embedded human colon carcinoma, using HSL (Phospho-Ser855/554) Antibody. The picture on the right is treated with the synthesized peptide.



Western Blotting

Image 2. Western blot analysis of extracts from HeLa cells treated with Adriamycin 0.5ng/ml 24h, using HSL (Phospho-Ser855/554) Antibody. The lane on the right is treated with the synthesized peptide.