



[Go to Product page](#)

Datasheet for ABIN1531234
anti-PLCB3 antibody (pSer1105)

2 Images

Overview

Quantity:	100 µL
Target:	PLCB3
Binding Specificity:	AA 1071-1120, pSer1105
Reactivity:	Human, Rat, Mouse
Host:	Rabbit
Clonality:	Polyclonal
Conjugate:	This PLCB3 antibody is un-conjugated
Application:	Western Blotting (WB), Immunohistochemistry (IHC), ELISA

Product Details

Immunogen:	The antiserum was produced against synthesized peptide derived from human PLCB3 around the phosphorylation site of Ser1105.
Isotype:	IgG
Specificity:	PLCB3 (Phospho-Ser1105) Antibody detects endogenous levels of PLCB3 only when phosphorylated at Ser1105. PhosphorylationH:S1105 M:S1105 R:S1105
Purification:	The antibody was purified from rabbit antiserum by affinity-chromatography using phospho peptide. The antibody against non-phospho peptide was removed by chromatography using corresponding non-phospho peptide.
Purity:	> 95 %

Target Details

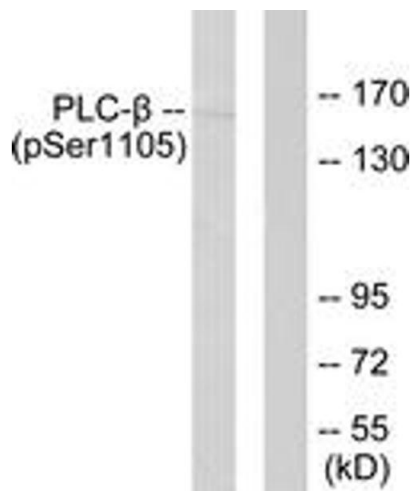
Target:	PLCB3
Alternative Name:	PLCB3 (PLCB3 Products)
Background:	Synonyms: 1-phosphatidylinositol-4,5-bisphosphate phosphodiesterase beta 3, Phosphoinositide phospholipase C, Phospholipase C-beta-3, PLC-beta-3, PLCB3 NCBI Gene Symbol: PLCB3
Molecular Weight:	138 kDa
Gene ID:	5331
OMIM:	600230
UniProt:	Q01970
Pathways:	WNT Signaling , Thyroid Hormone Synthesis , Myometrial Relaxation and Contraction , CXCR4-mediated Signaling Events , G-protein mediated Events

Application Details

Application Notes:	WB: 1:500~1:1000 IHC: 1:50~1:100 ELISA: 1:10000
Comment:	Unigene-Number: Hs.591953 (NCBI Gene Symbol: PLCB3)
Restrictions:	For Research Use only

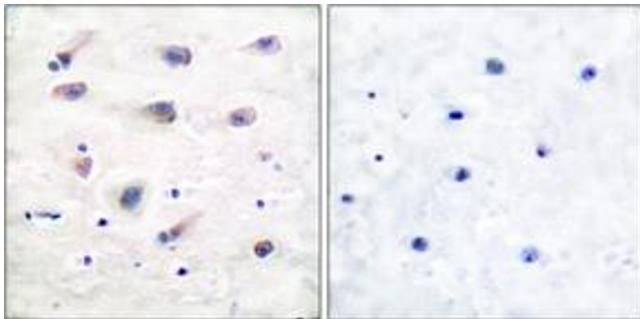
Handling

Format:	Liquid
Concentration:	1 mg/mL
Buffer:	phosphate buffered saline (without Mg ²⁺ and Ca ²⁺), pH 7.4, 150 mM NaCl, 0.02 % sodium azide and 50 % glycerol.
Preservative:	Sodium azide
Precaution of Use:	This product contains sodium azide: a POISONOUS AND HAZARDOUS SUBSTANCE which should be handled by trained staff only.
Storage:	-20 °C
Storage Comment:	Stable at -20°C for at least 1 year.
Expiry Date:	12 months



Western Blotting

Image 1. Western blot analysis of extracts from A431 cells, using PLCB3 (Phospho-Ser1105) Antibody. The lane on the right is treated with the synthesized peptide.



Immunohistochemistry

Image 2. Immunohistochemistry analysis of paraffin-embedded human brain, using PLCB3 (Phospho-Ser1105) Antibody. The picture on the right is treated with the synthesized peptide.