



[Go to Product page](#)

Datasheet for ABIN1531249  
**anti-WNK1 antibody (pThr60)**

2 Images

Overview

Quantity:	100 µg
Target:	WNK1
Binding Specificity:	AA 24-73, pThr60
Reactivity:	Human, Mouse, Rat
Host:	Rabbit
Clonality:	Polyclonal
Conjugate:	This WNK1 antibody is un-conjugated
Application:	Western Blotting (WB), ELISA, Immunohistochemistry (IHC)

Product Details

Immunogen:	The antiserum was produced against synthesized peptide derived from human WNK1 around the phosphorylation site of Thr58.
Isotype:	IgG
Specificity:	WNK1 (Phospho-Thr58) Antibody detects endogenous levels of WNK1 only when phosphorylated at Thr58. PhosphorylationH:T60 M:T58 R:T58
Purification:	The antibody was purified from rabbit antiserum by affinity-chromatography using phospho peptide. The antibody against non-phospho peptide was removed by chromatography using corresponding non-phospho peptide.
Purity:	> 95 %

## Target Details

---

Target:	WNK1
Alternative Name:	WNK1 ( <a href="#">WNK1 Products</a> )
Background:	Synonyms: WNK lysine deficient protein kinase 1, KDP, PRKWNK1, PROTEIN KINASE, LYSINE-DEFICIENT 1 NCBI Gene Symbol: WNK1
Molecular Weight:	250 kDa
Gene ID:	65125
OMIM:	145260
UniProt:	<a href="#">Q9H4A3</a>

## Application Details

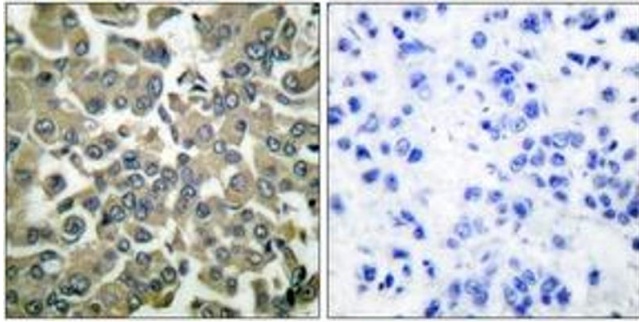
---

Application Notes:	WB: 1:500~1:1000 IHC: 1:50~1:100 ELISA: 1:5000
Comment:	Unigene-Number: Hs.356604, Hs.656067 (NCBI Gene Symbol: WNK1)
Restrictions:	For Research Use only

## Handling

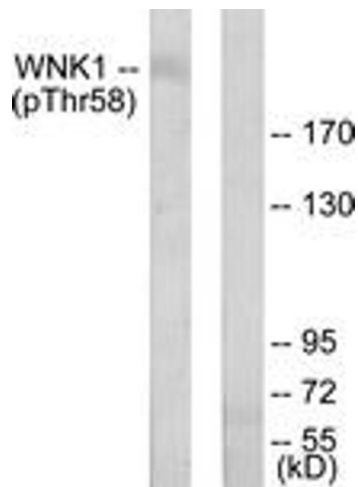
---

Format:	Liquid
Concentration:	1 mg/mL
Buffer:	phosphate buffered saline (without Mg <sup>2+</sup> and Ca <sup>2+</sup> ), pH 7.4, 150 mM NaCl, 0.02 % sodium azide and 50 % glycerol.
Preservative:	Sodium azide
Precaution of Use:	This product contains sodium azide: a POISONOUS AND HAZARDOUS SUBSTANCE which should be handled by trained staff only.
Storage:	-20 °C
Storage Comment:	Stable at -20°C for at least 1 year.
Expiry Date:	12 months



### Immunohistochemistry

**Image 1.** Immunohistochemistry analysis of paraffin-embedded human breast carcinoma, using WNK1 (Phospho-Thr58) Antibody. The picture on the right is treated with the synthesized peptide.



### Western Blotting

**Image 2.** Western blot analysis of extracts from 293 cells treated with EGF 200ng/ml 30', using WNK1 (Phospho-Thr58) Antibody. The lane on the right is treated with the synthesized peptide.