

Datasheet for ABIN1531254

**anti-Acetyl-CoA Carboxylase alpha antibody (pSer80)**[Go to Product page](#)**2** Images

## Overview

Quantity:	100 µL
Target:	Acetyl-CoA Carboxylase alpha (ACACA)
Binding Specificity:	AA 46-95, pSer80
Reactivity:	Human, Rat, Mouse
Host:	Rabbit
Clonality:	Polyclonal
Conjugate:	This Acetyl-CoA Carboxylase alpha antibody is un-conjugated
Application:	Western Blotting (WB), ELISA, Immunohistochemistry (IHC)

## Product Details

Immunogen:	The antiserum was produced against synthesized peptide derived from human ACC1 around the phosphorylation site of Ser80.
Isotype:	IgG
Specificity:	ACC1 (Phospho-Ser80) Antibody detects endogenous levels of ACC1 only when phosphorylated at Ser80. PhosphorylationH:S80 M:S79 R:S79
Purification:	The antibody was purified from rabbit antiserum by affinity-chromatography using phospho peptide. The antibody against non-phospho peptide was removed by chromatography using corresponding non-phospho peptide.
Purity:	> 95 %

## Target Details

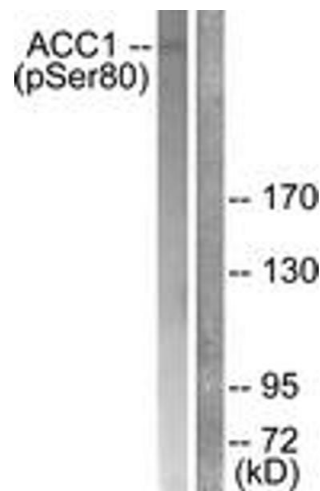
Target:	Acetyl-CoA Carboxylase alpha (ACACA)
Alternative Name:	ACC1 ( <a href="#">ACACA Products</a> )
Background:	Synonyms: ACAC, ACACA, ACC-alpha, ACCA, Acetyl-CoA carboxylase 1, NCBI Gene Symbol: ACACA
Molecular Weight:	265 kDa
Gene ID:	31
OMIM:	200350
UniProt:	<a href="#">Q13085</a>
Pathways:	<a href="#">AMPK Signaling</a> , <a href="#">Ribonucleoside Biosynthetic Process</a> , <a href="#">Warburg Effect</a>

## Application Details

Application Notes:	WB: 1:500~1:1000 IHC: 1:50~1:100 ELISA: 1:1000
Comment:	Unigene-Number: Hs.160556 (NCBI Gene Symbol: ACACA)
Restrictions:	For Research Use only

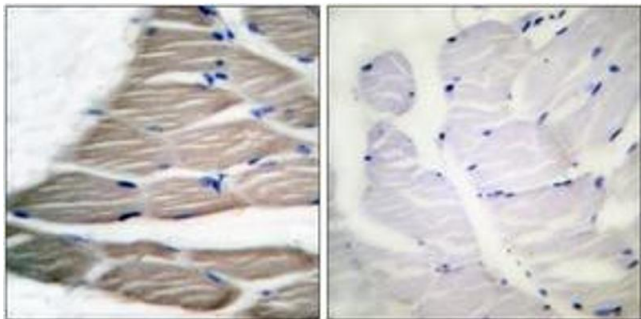
## Handling

Format:	Liquid
Concentration:	1 mg/mL
Buffer:	phosphate buffered saline (without Mg <sup>2+</sup> and Ca <sup>2+</sup> ), pH 7.4, 150 mM NaCl, 0.02 % sodium azide and 50 % glycerol.
Preservative:	Sodium azide
Precaution of Use:	This product contains sodium azide: a POISONOUS AND HAZARDOUS SUBSTANCE which should be handled by trained staff only.
Storage:	-20 °C
Storage Comment:	Stable at -20°C for at least 1 year.
Expiry Date:	12 months



#### Western Blotting

**Image 1.** Western blot analysis of extracts from K562 cells treated with Insulin 0.01U/ml 15', using ACC1 (Phospho-Ser80) Antibody. The lane on the right is treated with the synthesized peptide.



#### Immunohistochemistry

**Image 2.** Immunohistochemistry analysis of paraffin-embedded human breast carcinoma, using ACC1 (Phospho-Ser80) Antibody. The picture on the right is treated with the synthesized peptide.