

Datasheet for ABIN1531259

## anti-PRKAB1 antibody (pSer182)

### 2 Images



[Go to Product page](#)

### Overview

Quantity:	100 µL
Target:	PRKAB1
Binding Specificity:	AA 147-196, pSer182
Reactivity:	Human, Mouse, Rat
Host:	Rabbit
Clonality:	Polyclonal
Conjugate:	This PRKAB1 antibody is un-conjugated
Application:	Western Blotting (WB), ELISA, Immunohistochemistry (IHC)

### Product Details

Immunogen:	The antiserum was produced against synthesized peptide derived from human AMPK beta1 around the phosphorylation site of Ser181.
Isotype:	IgG
Specificity:	AMPK beta1 (Phospho-Ser181) Antibody detects endogenous levels of AMPK beta1 only when phosphorylated at Ser181. PhosphorylationH:S182 M:S182 R:S182
Purification:	The antibody was purified from rabbit antiserum by affinity-chromatography using phospho peptide. The antibody against non-phospho peptide was removed by chromatography using corresponding non-phospho peptide.
Purity:	> 95 %

Target Details

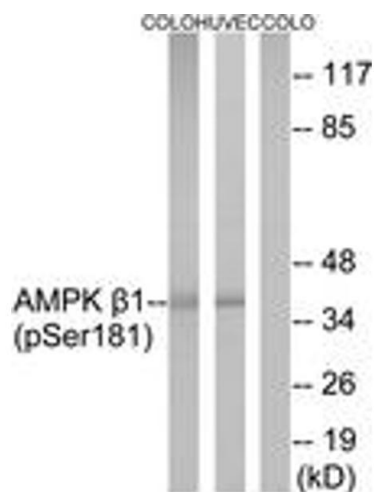
Target:	PRKAB1
Alternative Name:	AMPK Beta1 ( <a href="#">PRKAB1 Products</a> )
Background:	Synonyms: 5'-AMP-activated protein kinase subunit beta-1, AMPK subunit beta-1, AMPKb , PRKAB1, AMPK NCBI Gene Symbol: PRKAB1
Molecular Weight:	30 kDa
Gene ID:	5564
OMIM:	602740
UniProt:	<a href="#">Q9Y478</a>
Pathways:	<a href="#">AMPK Signaling</a> , <a href="#">Warburg Effect</a>

Application Details

Application Notes:	WB: 1:500~1:1000 IHC: 1:50~1:100 ELISA: 1:5000
Comment:	Unigene-Number: Hs.6061 (NCBI Gene Symbol: PRKAB1)
Restrictions:	For Research Use only

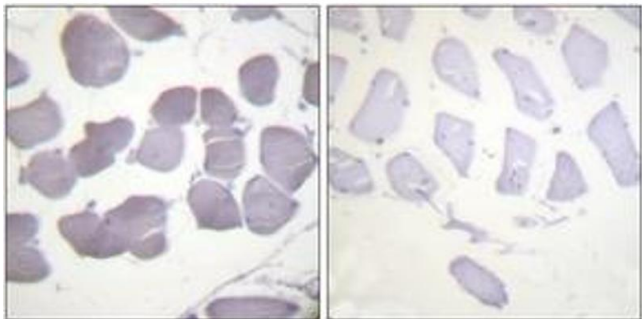
Handling

Format:	Liquid
Concentration:	1 mg/mL
Buffer:	phosphate buffered saline (without Mg2+ and Ca2+), pH 7.4, 150 mM NaCl, 0.02 % sodium azide and 50 % glycerol.
Preservative:	Sodium azide
Precaution of Use:	This product contains sodium azide: a POISONOUS AND HAZARDOUS SUBSTANCE which should be handled by trained staff only.
Storage:	-20 °C
Storage Comment:	Stable at -20°C for at least 1 year.
Expiry Date:	12 months



### Western Blotting

**Image 1.** Western blot analysis of extracts from COLO205 cells and HuvEc cells, using AMPK beta1 (Phospho-Ser181) Antibody. The lane on the right is treated with the synthesized peptide.



### Immunohistochemistry

**Image 2.** Immunohistochemistry analysis of paraffin-embedded human skeletal muscle, using AMPK beta1 (Phospho-Ser181) Antibody. The picture on the right is treated with the synthesized peptide.