

Datasheet for ABIN1531262
anti-CDC6 antibody (pSer54)

2 Images

[Go to Product page](#)

Overview

Quantity:	100 µg
Target:	CDC6
Binding Specificity:	AA 20-69, pSer54
Reactivity:	Human, Mouse
Host:	Rabbit
Clonality:	Polyclonal
Conjugate:	This CDC6 antibody is un-conjugated
Application:	Western Blotting (WB), ELISA, Immunohistochemistry (IHC)

Product Details

Immunogen:	The antiserum was produced against synthesized peptide derived from human CDC6 around the phosphorylation site of Ser54.
Isotype:	IgG
Specificity:	CDC6 (Phospho-Ser54) Antibody detects endogenous levels of CDC6 only when phosphorylated at Ser54. PhosphorylationH:S54 M:S55
Purification:	The antibody was purified from rabbit antiserum by affinity-chromatography using phospho peptide. The antibody against non-phospho peptide was removed by chromatography using corresponding non-phospho peptide.
Purity:	> 95 %

Target Details

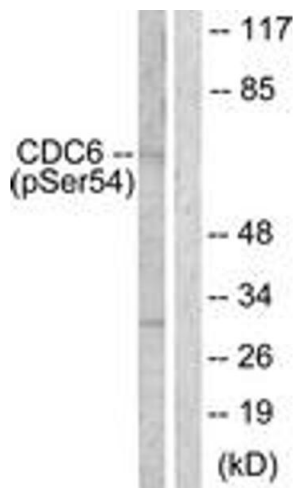
Target:	CDC6
Alternative Name:	CDC6 (CDC6 Products)
Background:	Synonyms: CDC18, CDC6 cell division cycle 6 homolog, CDC6-related protein NCBI Gene Symbol: CDC6
Molecular Weight:	62 kDa
Gene ID:	990
OMIM:	602627
UniProt:	Q99741
Pathways:	DNA Replication, Synthesis of DNA

Application Details

Application Notes:	WB: 1:500~1:1000 IHC: 1:50~1:100 ELISA: 1:5000
Comment:	Unigene-Number: Hs.405958 (NCBI Gene Symbol: CDC6)
Restrictions:	For Research Use only

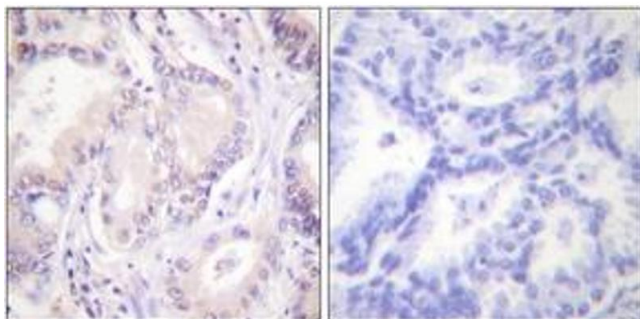
Handling

Format:	Liquid
Concentration:	1 mg/mL
Buffer:	phosphate buffered saline (without Mg ²⁺ and Ca ²⁺), pH 7.4, 150 mM NaCl, 0.02 % sodium azide and 50 % glycerol.
Preservative:	Sodium azide
Precaution of Use:	This product contains sodium azide: a POISONOUS AND HAZARDOUS SUBSTANCE which should be handled by trained staff only.
Storage:	-20 °C
Storage Comment:	Stable at -20°C for at least 1 year.
Expiry Date:	12 months



Western Blotting

Image 1. Western blot analysis of extracts from COS7 cells treated with EGF 200ng/ml 30', using CDC6 (Phospho-Ser54) Antibody. The lane on the right is treated with the synthesized peptide.



Immunohistochemistry

Image 2. Immunohistochemistry analysis of paraffin-embedded human lung carcinoma, using CDC6 (Phospho-Ser54) Antibody. The picture on the right is treated with the synthesized peptide.