



[Go to Product page](#)

Datasheet for ABIN1531273
anti-FANCD2 antibody (pSer222)

2 Images

Overview

Quantity:	100 µL
Target:	FANCD2
Binding Specificity:	AA 188-237, pSer222
Reactivity:	Human, Mouse, Rat
Host:	Rabbit
Clonality:	Polyclonal
Conjugate:	This FANCD2 antibody is un-conjugated
Application:	Western Blotting (WB), ELISA, Immunohistochemistry (IHC)

Product Details

Immunogen:	The antiserum was produced against synthesized peptide derived from human FANCD2 around the phosphorylation site of Ser222.
Isotype:	IgG
Specificity:	FANCD2 (Phospho-Ser222) Antibody detects endogenous levels of FANCD2 only when phosphorylated at Ser222. PhosphorylationH:S222 M:S220 R:S222
Purification:	The antibody was purified from rabbit antiserum by affinity-chromatography using phospho peptide. The antibody against non-phospho peptide was removed by chromatography using corresponding non-phospho peptide.
Purity:	> 95 %

Target Details

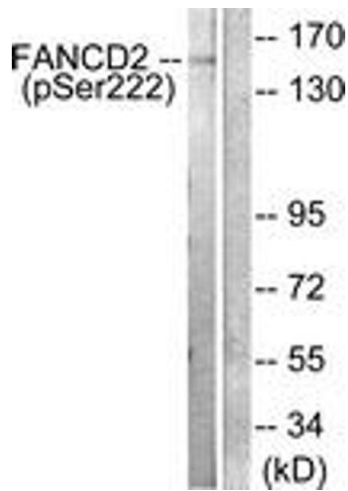
Target:	FANCD2
Alternative Name:	FANCD2 (FANCD2 Products)
Background:	Synonyms: FACD2, FANCD2, Fanconi anemia complementation group D2 protein NCBI Gene Symbol: FANCD2
Molecular Weight:	166 kDa
Gene ID:	2177
OMIM:	227646
UniProt:	Q9BXW9
Pathways:	DNA Damage Repair

Application Details

Application Notes:	WB: 1:500~1:1000 IHC: 1:50~1:100 ELISA: 1:1000
Comment:	Unigene-Number: Hs.208388 (NCBI Gene Symbol: FANCD2)
Restrictions:	For Research Use only

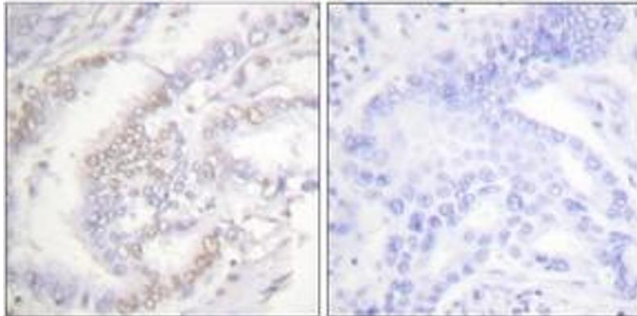
Handling

Format:	Liquid
Concentration:	1 mg/mL
Buffer:	phosphate buffered saline (without Mg ²⁺ and Ca ²⁺), pH 7.4, 150 mM NaCl, 0.02 % sodium azide and 50 % glycerol.
Preservative:	Sodium azide
Precaution of Use:	This product contains sodium azide: a POISONOUS AND HAZARDOUS SUBSTANCE which should be handled by trained staff only.
Storage:	-20 °C
Storage Comment:	Stable at -20°C for at least 1 year.
Expiry Date:	12 months



Western Blotting

Image 1. Western blot analysis of extracts from HT29 cells treated with Calyculin A 50ng/ml 30', using FANCD2 (Phospho-Ser222) Antibody. The lane on the right is treated with the synthesized peptide.



Immunohistochemistry

Image 2. Immunohistochemistry analysis of paraffin-embedded human lung carcinoma, using FANCD2 (Phospho-Ser222) Antibody. The picture on the right is treated with the synthesized peptide.