

Datasheet for ABIN1531278
anti-GRLF1 antibody (pTyr1105)

2 Images

[Go to Product page](#)

Overview

Quantity:	100 µg
Target:	GRLF1
Binding Specificity:	AA 1071-1120, pTyr1105
Reactivity:	Human, Mouse, Rat
Host:	Rabbit
Clonality:	Polyclonal
Conjugate:	This GRLF1 antibody is un-conjugated
Application:	Western Blotting (WB), ELISA, Immunohistochemistry (IHC)

Product Details

Immunogen:	The antiserum was produced against synthesized peptide derived from human GRF-1 around the phosphorylation site of Tyr1105.
Isotype:	IgG
Specificity:	GRF-1 (Phospho-Tyr1105) Antibody detects endogenous levels of GRF-1 only when phosphorylated at Tyr1105. PhosphorylationH:Y1105 M:Y943 R:Y1105
Purification:	The antibody was purified from rabbit antiserum by affinity-chromatography using phospho peptide. The antibody against non-phospho peptide was removed by chromatography using corresponding non-phospho peptide.
Purity:	> 95 %

Target Details

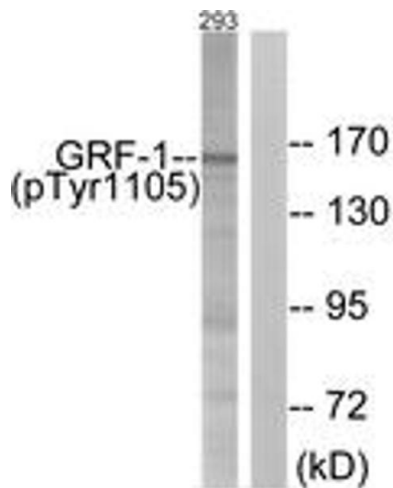
Target:	GRLF1
Alternative Name:	GRF-1 (GRLF1 Products)
Background:	Synonyms: GAP-associated protein p190, GRF1, GRLF, GRLF1, Glucocorticoid receptor DNA binding factor 1, Glucocorticoid receptor repression factor 1, KIAA1722, Rho GAP p190A, p190-A NCBI Gene Symbol: GRLF1
Molecular Weight:	172 kDa
Gene ID:	2909
OMIM:	605277
UniProt:	Q9NRY4
Pathways:	Tube Formation

Application Details

Application Notes:	WB: 1:500~1:1000 IHC: 1:50~1:100 ELISA: 1:1000
Comment:	Unigene-Number: Hs.509447 (NCBI Gene Symbol: GRLF1)
Restrictions:	For Research Use only

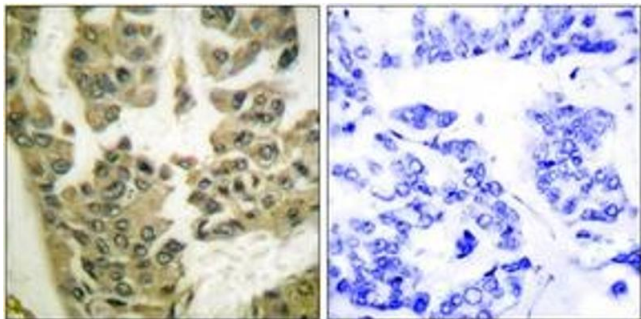
Handling

Format:	Liquid
Concentration:	1 mg/mL
Buffer:	phosphate buffered saline (without Mg ²⁺ and Ca ²⁺), pH 7.4, 150 mM NaCl, 0.02 % sodium azide and 50 % glycerol.
Preservative:	Sodium azide
Precaution of Use:	This product contains sodium azide: a POISONOUS AND HAZARDOUS SUBSTANCE which should be handled by trained staff only.
Storage:	-20 °C
Storage Comment:	Stable at -20°C for at least 1 year.
Expiry Date:	12 months



Western Blotting

Image 1. Western blot analysis of extracts from 293 cells treated with EGF 200ng/ml 30', using GRF-1 (Phospho-Tyr1105) Antibody. The lane on the right is treated with the synthesized peptide.



Immunohistochemistry

Image 2. Immunohistochemistry analysis of paraffin-embedded human breast carcinoma, using GRF-1 (Phospho-Tyr1105) Antibody. The picture on the right is treated with the synthesized peptide.