

Datasheet for ABIN1531288  
**anti-CSF2RB2 antibody (pTyr593)**

## 2 Images

[Go to Product page](#)

## Overview

Quantity:	100 µg
Target:	CSF2RB2
Binding Specificity:	AA 559-608, pTyr593
Reactivity:	Human, Rat
Host:	Rabbit
Clonality:	Polyclonal
Conjugate:	This CSF2RB2 antibody is un-conjugated
Application:	Western Blotting (WB), ELISA, Immunohistochemistry (IHC)

## Product Details

Immunogen:	The antiserum was produced against synthesized peptide derived from human IL-3R beta around the phosphorylation site of Tyr593.
Isotype:	IgG
Specificity:	IL-3R beta (Phospho-Tyr593) Antibody detects endogenous levels of IL-3R beta only when phosphorylated at Tyr593. PhosphorylationH:Y593 M:Y595 R:Y595
Purification:	The antibody was purified from rabbit antiserum by affinity-chromatography using phospho peptide. The antibody against non-phospho peptide was removed by chromatography using corresponding non-phospho peptide.
Purity:	> 95 %

## Target Details

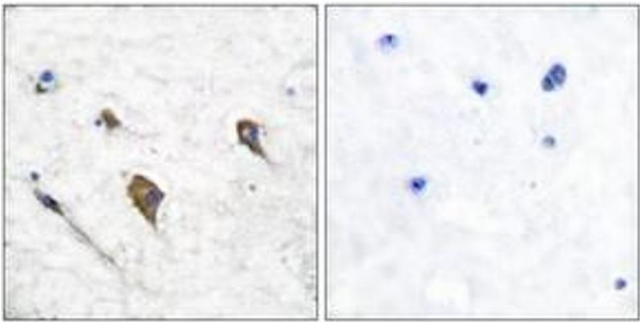
Target:	CSF2RB2
Alternative Name:	IL-3R beta ( <a href="#">CSF2RB2 Products</a> )
Background:	Synonyms: AIC2B, CD131, CDw131, CSF2RB, CSF2RB1, CYRB, Cytokine receptor common beta chain precursor, IL-5R-B, IL3RB, IL3RB1, IL5RB NCBI Gene Symbol: CSF2RB
Molecular Weight:	97 kDa
Gene ID:	1439
OMIM:	138981
UniProt:	<a href="#">P32927</a>

## Application Details

Application Notes:	WB: 1:500~1:1000 IHC: 1:50~1:100 ELISA: 1:1000
Comment:	Unigene-Number: Hs.592192 (NCBI Gene Symbol: CSF2RB)
Restrictions:	For Research Use only

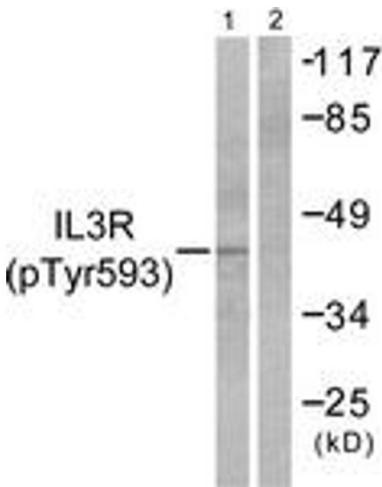
## Handling

Format:	Liquid
Concentration:	1 mg/mL
Buffer:	phosphate buffered saline (without Mg2+ and Ca2+), pH 7.4, 150 mM NaCl, 0.02 % sodium azide and 50 % glycerol.
Preservative:	Sodium azide
Precaution of Use:	This product contains sodium azide: a POISONOUS AND HAZARDOUS SUBSTANCE which should be handled by trained staff only.
Storage:	-20 °C
Storage Comment:	Stable at -20°C for at least 1 year.
Expiry Date:	12 months



### Immunohistochemistry

**Image 1.** Immunohistochemistry analysis of paraffin-embedded human brain, using IL-3R beta (Phospho-Tyr593) Antibody. The picture on the right is treated with the synthesized peptide.



### Western Blotting

**Image 2.** Western blot analysis of extracts from RAW264.7 cells treated with G-CSF 25ng/ml 15', using IL-3R beta (Phospho-Tyr593) Antibody. The lane on the right is treated with the synthesized peptide.