

Datasheet for ABIN1531297  
**anti-SAG antibody (pSer412)**

## 2 Images

[Go to Product page](#)

## Overview

Quantity:	100 µg
Target:	SAG
Binding Specificity:	AA 369-418, pSer412
Reactivity:	Human
Host:	Rabbit
Clonality:	Polyclonal
Conjugate:	This SAG antibody is un-conjugated
Application:	Western Blotting (WB), Immunohistochemistry (IHC), ELISA

## Product Details

Immunogen:	The antiserum was produced against synthesized peptide derived from human Arrestin 1 around the phosphorylation site of Ser412.
Isotype:	IgG
Specificity:	Arrestin 1 (Phospho-Ser412) Antibody detects endogenous levels of Arrestin 1 only when phosphorylated at Ser412. PhosphorylationH:S412
Purification:	The antibody was purified from rabbit antiserum by affinity-chromatography using phospho peptide. The antibody against non-phospho peptide was removed by chromatography using corresponding non-phospho peptide.
Purity:	> 95 %

## Target Details

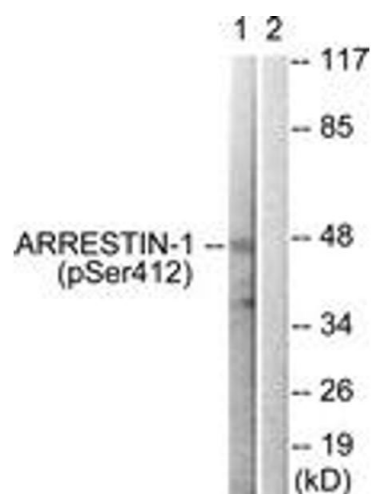
Target:	SAG
Alternative Name:	Arrestin 1 ( <a href="#">SAG Products</a> )
Background:	Synonyms: ARR1, arrestin 2, arrestin beta 1, beta-arrestin-1 NCBI Gene Symbol: ARRB1
Molecular Weight:	47 kDa
Gene ID:	408
OMIM:	107940
UniProt:	<a href="#">P49407</a>
Pathways:	<a href="#">Regulation of G-Protein Coupled Receptor Protein Signaling</a>

## Application Details

Application Notes:	WB: 1:500~1:1000 IHC: 1:50~1:100 ELISA: 1:1000
Comment:	Unigene-Number: Hs.503284, Hs.625320 (NCBI Gene Symbol: ARRB1)
Restrictions:	For Research Use only

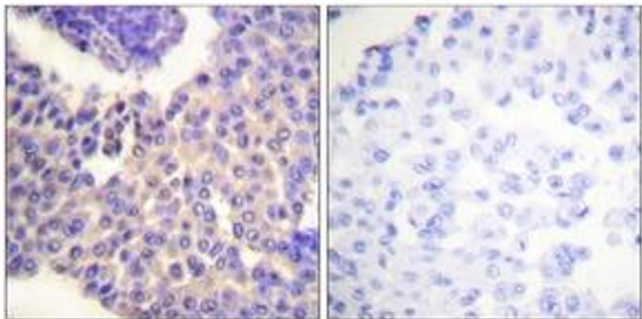
## Handling

Format:	Liquid
Concentration:	1 mg/mL
Buffer:	phosphate buffered saline (without Mg <sup>2+</sup> and Ca <sup>2+</sup> ), pH 7.4, 150 mM NaCl, 0.02 % sodium azide and 50 % glycerol.
Preservative:	Sodium azide
Precaution of Use:	This product contains sodium azide: a POISONOUS AND HAZARDOUS SUBSTANCE which should be handled by trained staff only.
Storage:	-20 °C
Storage Comment:	Stable at -20°C for at least 1 year.
Expiry Date:	12 months



### Western Blotting

**Image 1.** Western blot analysis of extracts from COS7 cells treated with Etoposide 25uM 60', using Arrestin 1 (Phospho-Ser412) Antibody. The lane on the right is treated with the synthesized peptide.



### Immunohistochemistry

**Image 2.** Immunohistochemistry analysis of paraffin-embedded human breast carcinoma, using Arrestin 1 (Phospho-Ser412) Antibody. The picture on the right is treated with the synthesized peptide.