

Datasheet for ABIN1531298
anti-DCLRE1C antibody (pSer516)

2 Images

[Go to Product page](#)

Overview

Quantity:	100 µg
Target:	DCLRE1C
Binding Specificity:	AA 482-531, pSer516
Reactivity:	Human, Mouse
Host:	Rabbit
Clonality:	Polyclonal
Conjugate:	This DCLRE1C antibody is un-conjugated
Application:	Western Blotting (WB), ELISA, Immunohistochemistry (IHC)

Product Details

Immunogen:	The antiserum was produced against synthesized peptide derived from human Artemis around the phosphorylation site of Ser516.
Isotype:	IgG
Specificity:	Artemis (Phospho-Ser516) Antibody detects endogenous levels of Artemis only when phosphorylated at Ser516. PhosphorylationH:S516 M:S518
Purification:	The antibody was purified from rabbit antiserum by affinity-chromatography using phospho peptide. The antibody against non-phospho peptide was removed by chromatography using corresponding non-phospho peptide.
Purity:	> 95 %

Target Details

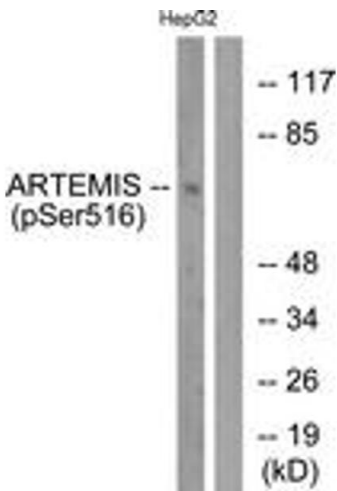
Target:	DCLRE1C
Alternative Name:	Artemis (DCLRE1C Products)
Background:	Synonyms: A-SCID protein, ARTEMIS, ASCID, DCLRE1C, DCR1C, DNA cross-link repair 1C protein, SCIDA, SNM1- like protein, SNM1C NCBI Gene Symbol: DCLRE1C
Molecular Weight:	78 kDa
Gene ID:	64421
OMIM:	602450
UniProt:	Q96SD1
Pathways:	DNA Damage Repair

Application Details

Application Notes:	WB: 1:500~1:1000 IHC: 1:50~1:100 ELISA: 1:1000
Comment:	Unigene-Number: Hs.656065 (NCBI Gene Symbol: DCLRE1C)
Restrictions:	For Research Use only

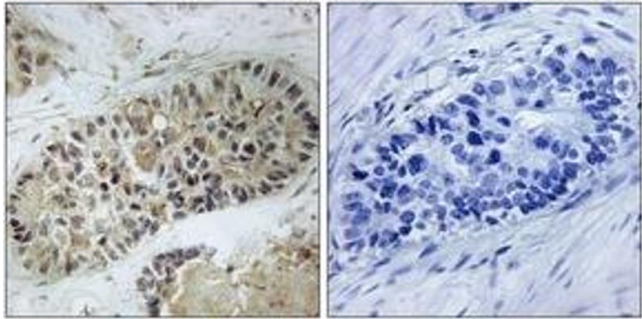
Handling

Format:	Liquid
Concentration:	1 mg/mL
Buffer:	phosphate buffered saline (without Mg ²⁺ and Ca ²⁺), pH 7.4, 150 mM NaCl, 0.02 % sodium azide and 50 % glycerol.
Preservative:	Sodium azide
Precaution of Use:	This product contains sodium azide: a POISONOUS AND HAZARDOUS SUBSTANCE which should be handled by trained staff only.
Storage:	-20 °C
Storage Comment:	Stable at -20°C for at least 1 year.
Expiry Date:	12 months



Western Blotting

Image 1. Western blot analysis of extracts from HepG2 cells treated with EGF 200ng/ml 30', using Artemis (Phospho-Ser516) Antibody. The lane on the right is treated with the synthesized peptide.



Immunohistochemistry

Image 2. Immunohistochemistry analysis of paraffin-embedded human lung carcinoma, using Artemis (Phospho-Ser516) Antibody. The picture on the right is treated with the synthesized peptide.