

Datasheet for ABIN1531300
anti-ATPase antibody (pSer16)[Go to Product page](#)

2 Images

Overview

Quantity:	100 µg
Target:	ATPase (DNAH8)
Binding Specificity:	AA 5-54, pSer16
Reactivity:	Human, Mouse, Rat
Host:	Rabbit
Clonality:	Polyclonal
Conjugate:	This ATPase antibody is un-conjugated
Application:	ELISA, Western Blotting (WB), Immunohistochemistry (IHC)

Product Details

Immunogen:	The antiserum was produced against synthesized peptide derived from human ATPase around the phosphorylation site of Ser16.
Isotype:	IgG
Specificity:	ATPase (Phospho-Ser16) Antibody detects endogenous levels of ATPase only when phosphorylated at Ser16. PhosphorylationH:S16 M:S16 R:S16
Purification:	The antibody was purified from rabbit antiserum by affinity-chromatography using phospho peptide. The antibody against non-phospho peptide was removed by chromatography using corresponding non-phospho peptide.
Purity:	> 95 %

Target Details

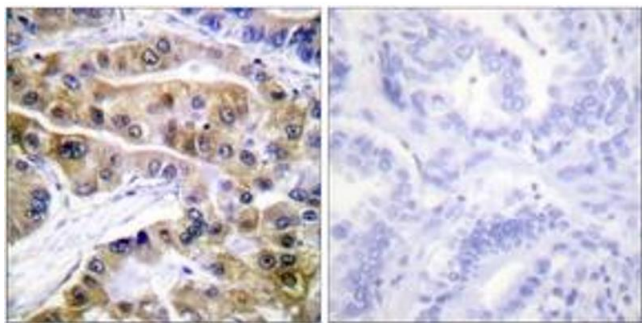
Target:	ATPase (DNAH8)
Alternative Name:	ATPase (DNAH8 Products)
Background:	Synonyms: A1A1, AT1A1, ATPase, Na ⁺ /K ⁺ transporting, alpha 1 polypeptide, Hypothetical protein MGC38419, Na ⁺ /K ⁺ ATPase 1, Na,K-ATPase 1, Sodium pump 1, Sodium/potassium-transporting ATPase alpha-1 chain precursor NCBI Gene Symbol: ATP1A1
Molecular Weight:	112 kDa
Gene ID:	476
OMIM:	182310
UniProt:	P05023
Pathways:	Synaptic Membrane , Proton Transport

Application Details

Application Notes:	WB: 1:500~1:1000 IHC: 1:50~1:100 ELISA: 1:1000
Comment:	Unigene-Number: Hs.371889 (NCBI Gene Symbol: ATP1A1)
Restrictions:	For Research Use only

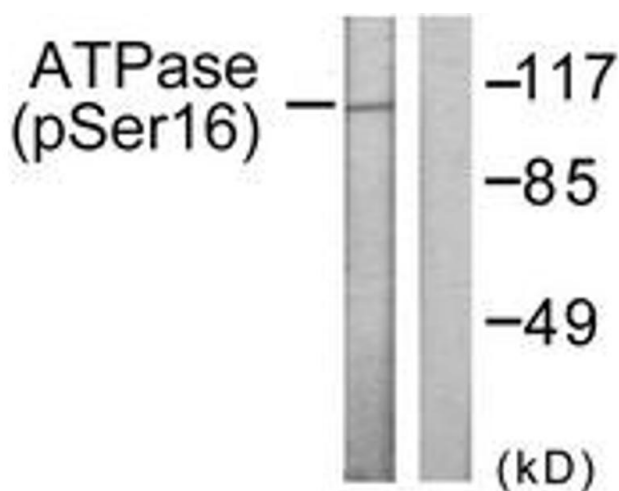
Handling

Format:	Liquid
Concentration:	1 mg/mL
Buffer:	phosphate buffered saline (without Mg ²⁺ and Ca ²⁺), pH 7.4, 150 mM NaCl, 0.02 % sodium azide and 50 % glycerol.
Preservative:	Sodium azide
Precaution of Use:	This product contains sodium azide: a POISONOUS AND HAZARDOUS SUBSTANCE which should be handled by trained staff only.
Storage:	-20 °C
Storage Comment:	Stable at -20°C for at least 1 year.
Expiry Date:	12 months



Immunohistochemistry

Image 1. Immunohistochemistry analysis of paraffin-embedded human lung carcinoma, using ATPase (Phospho-Ser16) Antibody. The picture on the right is treated with the synthesized peptide.



Western Blotting

Image 2. Western blot analysis of extracts from 293 cells treated with PMA 125ng/ml 30', using ATPase (Phospho-Ser16) Antibody. The lane on the right is treated with the synthesized peptide.