

Datasheet for ABIN1531304
anti-Caldesmon antibody (pSer789)



[Go to Product page](#)

3 Images

Overview

Quantity:	100 µL
Target:	Caldesmon (CALD1)
Binding Specificity:	AA 744-793, pSer789
Reactivity:	Human, Rat, Mouse
Host:	Rabbit
Clonality:	Polyclonal
Conjugate:	This Caldesmon antibody is un-conjugated
Application:	Western Blotting (WB), Immunohistochemistry (IHC), ELISA, Immunofluorescence (IF)

Product Details

Immunogen:	The antiserum was produced against synthesized peptide derived from human Caldesmon around the phosphorylation site of Ser789.
Isotype:	IgG
Specificity:	Caldesmon (Phospho-Ser789) Antibody detects endogenous levels of Caldesmon only when phosphorylated at Ser789. PhosphorylationH:S789 M:S560 R:S534
Purification:	The antibody was purified from rabbit antiserum by affinity-chromatography using phospho peptide. The antibody against non-phospho peptide was removed by chromatography using corresponding non-phospho peptide.
Purity:	> 95 %

Target Details

Target:	Caldesmon (CALD1)
Alternative Name:	Caldesmon (CALD1 Products)
Background:	Synonyms: CAD, CALD1, CDM, L-caldesmon, Non-muscle caldesmon NCBI Gene Symbol: CALD1
Molecular Weight:	93 kDa
Gene ID:	800
OMIM:	114213
UniProt:	Q05682
Pathways:	Myometrial Relaxation and Contraction

Application Details

Application Notes:	WB: 1:500~1:1000 IHC: 1:50~1:100 IF: 1:100~1:500 ELISA: 1:1000
Comment:	Unigene-Number: Hs.490203 (NCBI Gene Symbol: CALD1)
Restrictions:	For Research Use only

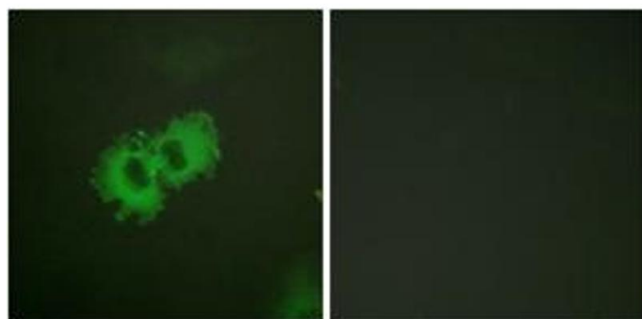
Handling

Format:	Liquid
Concentration:	1 mg/mL
Buffer:	phosphate buffered saline (without Mg ²⁺ and Ca ²⁺), pH 7.4, 150 mM NaCl, 0.02 % sodium azide and 50 % glycerol.
Preservative:	Sodium azide
Precaution of Use:	This product contains sodium azide: a POISONOUS AND HAZARDOUS SUBSTANCE which should be handled by trained staff only.
Storage:	-20 °C
Storage Comment:	Stable at -20°C for at least 1 year.
Expiry Date:	12 months



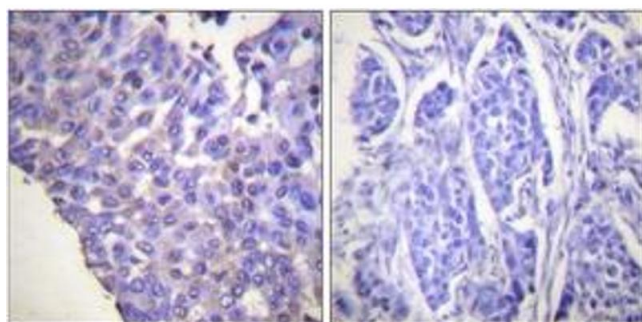
Western Blotting

Image 1. Western blot analysis of extracts from HeLa cells treated with EGF 200ng/ml 30', using Caldesmon (Phospho-Ser789) Antibody. The lane on the right is treated with the synthesized peptide.



Immunofluorescence

Image 2. Immunofluorescence analysis of HeLa cells, using Caldesmon (Phospho-Ser789) Antibody. The picture on the right is treated with the synthesized peptide.



Immunohistochemistry

Image 3. Immunohistochemistry analysis of paraffin-embedded human breast carcinoma, using Caldesmon (Phospho-Ser789) Antibody. The picture on the right is treated with the synthesized peptide.