

Datasheet for ABIN1531306  
**anti-CBL antibody (pTyr774)**



[Go to Product page](#)

3 Images

## Overview

Quantity:	100 µL
Target:	CBL
Binding Specificity:	AA 740-789, pTyr774
Reactivity:	Human, Mouse, Rat
Host:	Rabbit
Clonality:	Polyclonal
Conjugate:	This CBL antibody is un-conjugated
Application:	Western Blotting (WB), ELISA, Immunohistochemistry (IHC), Immunofluorescence (IF)

## Product Details

Immunogen:	The antiserum was produced against synthesized peptide derived from human CBL around the phosphorylation site of Tyr774.
Isotype:	IgG
Specificity:	CBL (Phospho-Tyr774) Antibody detects endogenous levels of CBL only when phosphorylated at Tyr774. PhosphorylationH:Y774 M:Y780 R:Y888
Purification:	The antibody was purified from rabbit antiserum by affinity-chromatography using phospho peptide. The antibody against non-phospho peptide was removed by chromatography using corresponding non-phospho peptide.
Purity:	> 95 %

### Target Details

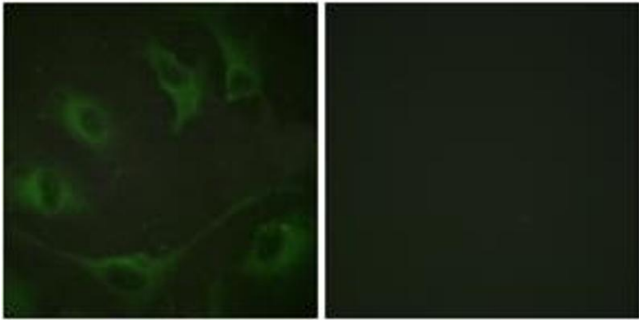
Target:	CBL
Alternative Name:	CBL ( <a href="#">CBL Products</a> )
Background:	Synonyms: Cas-Br-M (murine) ecotropic retroviral transforming, CBL E3 ubiquitin protein ligase, CBL2, Proto-oncogene c-CBL, Signal transduction protein CBL NCBI Gene Symbol: CBL
Molecular Weight:	99 kDa
Gene ID:	867
OMIM:	165360
UniProt:	<a href="#">P22681</a>
Pathways:	<a href="#">TCR Signaling</a> , <a href="#">Interferon-gamma Pathway</a> , <a href="#">EGFR Signaling Pathway</a> , <a href="#">EGFR Downregulation</a> , <a href="#">VEGFR1 Specific Signals</a>

### Application Details

Application Notes:	WB: 1:500~1:1000 IHC: 1:50~1:100 IF: 1:100~1:500 ELISA: 1:1000
Comment:	Unigene-Number: Hs.504096 (NCBI Gene Symbol: CBL)
Restrictions:	For Research Use only

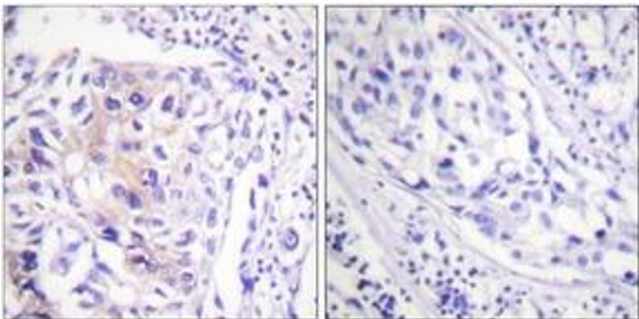
### Handling

Format:	Liquid
Concentration:	1 mg/mL
Buffer:	phosphate buffered saline (without Mg2+ and Ca2+), pH 7.4, 150 mM NaCl, 0.02 % sodium azide and 50 % glycerol.
Preservative:	Sodium azide
Precaution of Use:	This product contains sodium azide: a POISONOUS AND HAZARDOUS SUBSTANCE which should be handled by trained staff only.
Storage:	-20 °C
Storage Comment:	Stable at -20°C for at least 1 year.
Expiry Date:	12 months



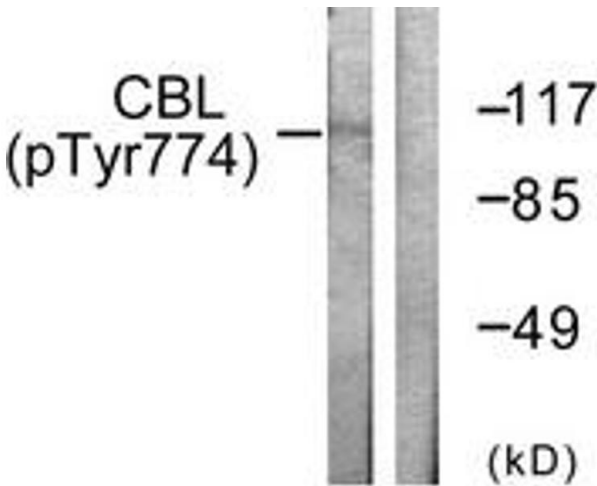
**Immunofluorescence**

**Image 1.** Immunofluorescence analysis of A549 cells, using CBL (Phospho-Tyr774) Antibody. The picture on the right is treated with the synthesized peptide.



**Immunohistochemistry**

**Image 2.** Immunohistochemistry analysis of paraffin-embedded human breast carcinoma, using CBL (Phospho-Tyr774) Antibody. The picture on the right is treated with the synthesized peptide.



**Western Blotting**

**Image 3.** Western blot analysis of extracts from HeLa cells treated with EGF 200ng/ml 30', using CBL (Phospho-Tyr774) Antibody. The lane on the right is treated with the synthesized peptide.