

Datasheet for ABIN1531314
anti-ERF antibody (pThr56)[Go to Product page](#)

2 Images

Overview

Quantity:	100 µg
Target:	ERF
Binding Specificity:	AA 492-541, pThr56
Reactivity:	Human, Mouse
Host:	Rabbit
Clonality:	Polyclonal
Conjugate:	This ERF antibody is un-conjugated
Application:	Immunohistochemistry (IHC), ELISA, Immunofluorescence (IF)

Product Details

Immunogen:	The antiserum was produced against synthesized peptide derived from human ERF around the phosphorylation site of Thr526.
Isotype:	IgG
Specificity:	ERF (Phospho-Thr526) Antibody detects endogenous levels of ERF only when phosphorylated at Thr526. PhosphorylationH:T56 M:T529
Purification:	The antibody was purified from rabbit antiserum by affinity-chromatography using phospho peptide. The antibody against non-phospho peptide was removed by chromatography using corresponding non-phospho peptide.
Purity:	> 95 %

Target Details

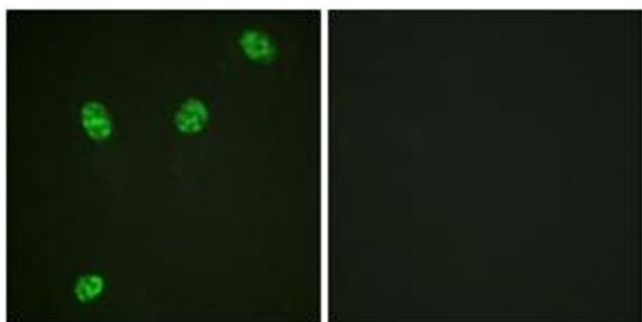
Target:	ERF
Alternative Name:	ERF (ERF Products)
Background:	Synonyms: ETS-domain transcription factor ERF, Ets2 repressor factor NCBI Gene Symbol: ERF
Molecular Weight:	58 kDa
Gene ID:	2077
OMIM:	611888
UniProt:	P50548

Application Details

Application Notes:	IHC: 1:50~1:100 IF: 1:100~1:500 ELISA: 1:20000
Comment:	Unigene-Number: Hs.655969 (NCBI Gene Symbol: ERF)
Restrictions:	For Research Use only

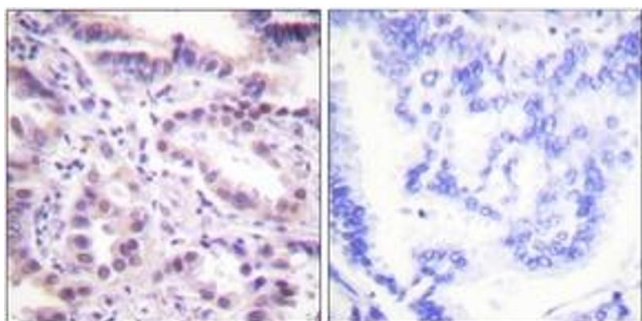
Handling

Format:	Liquid
Concentration:	1 mg/mL
Buffer:	phosphate buffered saline (without Mg ²⁺ and Ca ²⁺), pH 7.4, 150 mM NaCl, 0.02 % sodium azide and 50 % glycerol.
Preservative:	Sodium azide
Precaution of Use:	This product contains sodium azide: a POISONOUS AND HAZARDOUS SUBSTANCE which should be handled by trained staff only.
Storage:	-20 °C
Storage Comment:	Stable at -20°C for at least 1 year.
Expiry Date:	12 months



Immunofluorescence

Image 1. Immunofluorescence analysis of HeLa cells, using ERF (Phospho-Thr526) Antibody. The picture on the right is treated with the synthesized peptide.



Immunohistochemistry

Image 2. Immunohistochemistry analysis of paraffin-embedded human lung carcinoma, using ERF (Phospho-Thr526) Antibody. The picture on the right is treated with the synthesized peptide.