



[Go to Product page](#)

Datasheet for ABIN1531315  
**anti-ETS1 antibody (pThr38)**

3 Images

1 Publication

### Overview

Quantity:	100 µg
Target:	ETS1
Binding Specificity:	AA 11-60, pThr38
Reactivity:	Human, Mouse, Rat
Host:	Rabbit
Clonality:	Polyclonal
Application:	Western Blotting (WB), ELISA, Immunofluorescence (IF), Immunohistochemistry (IHC)

### Product Details

Immunogen:	The antiserum was produced against synthesized peptide derived from human ETS1 around the phosphorylation site of Thr38.
Isotype:	IgG
Specificity:	ETS1 (Phospho-Thr38) Antibody detects endogenous levels of ETS1 only when phosphorylated at Thr38. PhosphorylationH:T38 M:T38 R:T38
Purification:	The antibody was purified from rabbit antiserum by affinity-chromatography using phospho peptide. The antibody against non-phospho peptide was removed by chromatography using corresponding non-phospho peptide.
Purity:	> 95 %

## Target Details

---

Target:	ETS1
Alternative Name:	ETS1 ( <a href="#">ETS1 Products</a> )
Background:	Synonyms: C-ets-1 protein, ETS-1, ETS1, p54 NCBI Gene Symbol: ETS1
Molecular Weight:	50 kDa
Gene ID:	2113
OMIM:	164720
UniProt:	<a href="#">P14921</a>

## Application Details

---

Application Notes:	WB: 1:500~1:1000 IHC: 1:50~1:100 IF: 1:100~1:500 ELISA: 1:10000
Comment:	Unigene-Number: Hs.369438 (NCBI Gene Symbol: ETS1)
Restrictions:	For Research Use only

## Handling

---

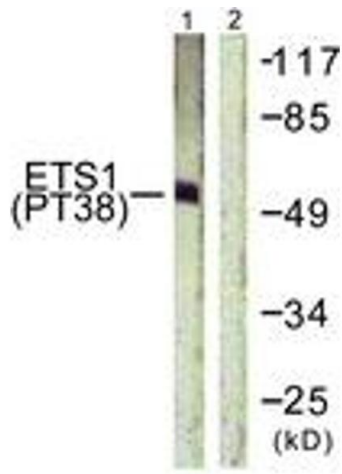
Format:	Liquid
Concentration:	1 mg/mL
Buffer:	phosphate buffered saline (without Mg <sup>2+</sup> and Ca <sup>2+</sup> ), pH 7.4, 150 mM NaCl, 0.02 % sodium azide and 50 % glycerol.
Preservative:	Sodium azide
Precaution of Use:	This product contains sodium azide: a POISONOUS AND HAZARDOUS SUBSTANCE which should be handled by trained staff only.
Storage:	-20 °C
Storage Comment:	Stable at -20°C for at least 1 year.
Expiry Date:	12 months

## Publications

---

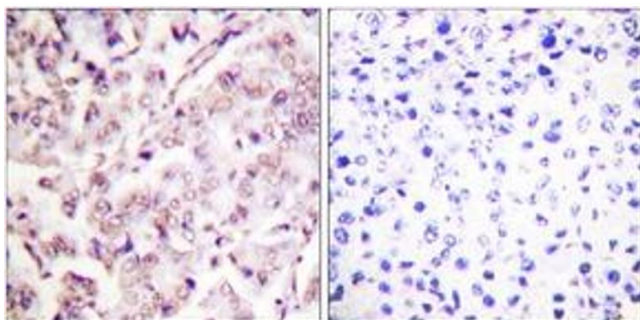
Product cited in:	Gao, Peng, Liang, Shahbaz, Liu, Wang, Sun, Niu, Niu, Liu, Wang, Lin, Wang, Niu: "β6 integrin induces the expression of metalloproteinase-3 and metalloproteinase-9 in colon cancer cells via
-------------------	--

Images



**Western Blotting**

**Image 1.** Western blot analysis of extracts from HeLa cells treated with Serum 20% 15', using ETS1 (Phospho-Thr38) Antibody. The lane on the right is treated with the synthesized peptide.



**Immunohistochemistry**

**Image 2.** Immunohistochemistry analysis of paraffin-embedded human breast carcinoma, using ETS1 (Phospho-Thr38) Antibody. The picture on the right is treated with the synthesized peptide.



**Immunofluorescence**

**Image 3.** Immunofluorescence analysis of HeLa cells, using ETS1 (Phospho-Thr38) Antibody. The picture on the right is treated with the synthesized peptide.