

Datasheet for ABIN1531324
anti-HSPB6 antibody (pSer16)



[Go to Product page](#)

2 Images

Overview

Quantity:	100 µL
Target:	HSPB6
Binding Specificity:	AA 5-54, pSer16
Reactivity:	Human, Rat, Mouse
Host:	Rabbit
Clonality:	Polyclonal
Conjugate:	This HSPB6 antibody is un-conjugated
Application:	ELISA, Immunohistochemistry (IHC), Immunofluorescence (IF)

Product Details

Immunogen:	The antiserum was produced against synthesized peptide derived from human HSP20 around the phosphorylation site of Ser16.
Isotype:	IgG
Specificity:	HSP20 (Phospho-Ser16) Antibody detects endogenous levels of HSP20 only when phosphorylated at Ser16. PhosphorylationH:S16 M:S16 R:S16
Purification:	The antibody was purified from rabbit antiserum by affinity-chromatography using phospho peptide. The antibody against non-phospho peptide was removed by chromatography using corresponding non-phospho peptide.
Purity:	> 95 %

Target Details

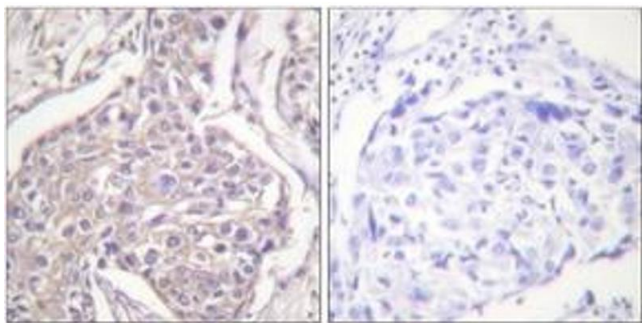
Target:	HSPB6
Alternative Name:	HSP20 (HSPB6 Products)
Background:	Synonyms: HSPB6, Heat-shock 20 kDa like-protein p20 NCBI Gene Symbol: HSPB6
Molecular Weight:	17 kDa
Gene ID:	126393
OMIM:	610695
UniProt:	O14558

Application Details

Application Notes:	IHC: 1:50~1:100 IF: 1:100~1:500 ELISA: 1:5000
Comment:	Unigene-Number: Hs.534538 (NCBI Gene Symbol: HSPB6)
Restrictions:	For Research Use only

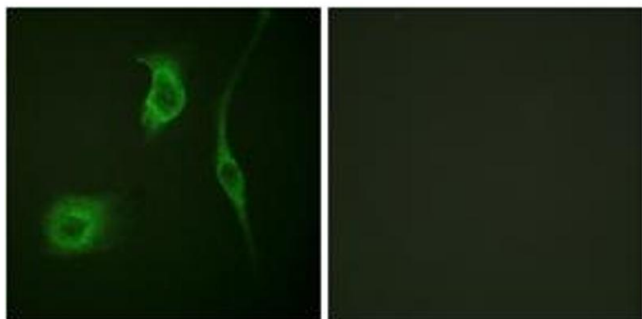
Handling

Format:	Liquid
Concentration:	1 mg/mL
Buffer:	phosphate buffered saline (without Mg ²⁺ and Ca ²⁺), pH 7.4, 150 mM NaCl, 0.02 % sodium azide and 50 % glycerol.
Preservative:	Sodium azide
Precaution of Use:	This product contains sodium azide: a POISONOUS AND HAZARDOUS SUBSTANCE which should be handled by trained staff only.
Storage:	-20 °C
Storage Comment:	Stable at -20°C for at least 1 year.
Expiry Date:	12 months



Immunohistochemistry

Image 1. Immunohistochemistry analysis of paraffin-embedded human breast carcinoma, using HSP20 (Phospho-Ser16) Antibody. The picture on the right is treated with the synthesized peptide.



Immunofluorescence

Image 2. Immunofluorescence analysis of HeLa cells, using HSP20 (Phospho-Ser16) Antibody. The picture on the right is treated with the synthesized peptide.