

Datasheet for ABIN1531336  
**anti-LAT antibody (pTyr191)**



[Go to Product page](#)

2 Images

## Overview

Quantity:	100 µL
Target:	LAT
Binding Specificity:	AA 191-240, pTyr191
Reactivity:	Human, Mouse, Rat
Host:	Rabbit
Clonality:	Polyclonal
Conjugate:	This LAT antibody is un-conjugated
Application:	Western Blotting (WB), ELISA, Immunohistochemistry (IHC)

## Product Details

Immunogen:	The antiserum was produced against synthesized peptide derived from human LAT around the phosphorylation site of Tyr191.
Isotype:	IgG
Specificity:	LAT (Phospho-Tyr191) Antibody detects endogenous levels of LAT only when phosphorylated at Tyr191. PhosphorylationH:Y191 M:Y195 R:Y195
Purification:	The antibody was purified from rabbit antiserum by affinity-chromatography using phospho peptide. The antibody against non-phospho peptide was removed by chromatography using corresponding non-phospho peptide.
Purity:	> 95 %

### Target Details

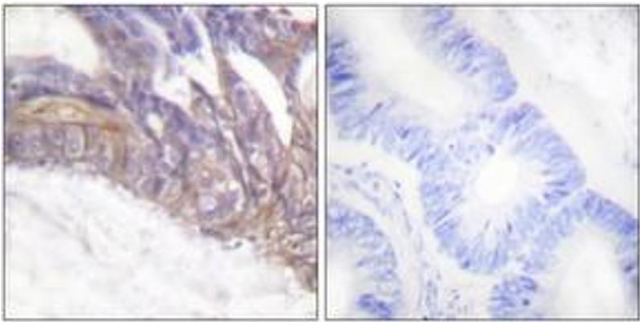
Target:	LAT
Alternative Name:	LAT ( <a href="#">LAT Products</a> )
Background:	Synonyms: 36 kDa phospho-tyrosine adaptor protein, Linker for activation of T cells, p36-38, pp36 NCBI Gene Symbol: LAT
Molecular Weight:	27 kDa
Gene ID:	27040
OMIM:	602354
UniProt:	<a href="#">O43561</a>
Pathways:	<a href="#">TCR Signaling</a> , <a href="#">Fc-epsilon Receptor Signaling Pathway</a>

### Application Details

Application Notes:	WB: 1:500~1:1000 IHC: 1:50~1:100 ELISA: 1:1000
Comment:	Unigene-Number: Hs.632179 (NCBI Gene Symbol: LAT)
Restrictions:	For Research Use only

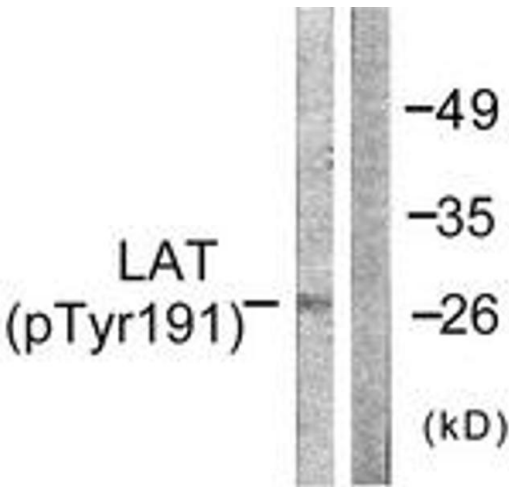
### Handling

Format:	Liquid
Concentration:	1 mg/mL
Buffer:	phosphate buffered saline (without Mg2+ and Ca2+), pH 7.4, 150 mM NaCl, 0.02 % sodium azide and 50 % glycerol.
Preservative:	Sodium azide
Precaution of Use:	This product contains sodium azide: a POISONOUS AND HAZARDOUS SUBSTANCE which should be handled by trained staff only.
Storage:	-20 °C
Storage Comment:	Stable at -20°C for at least 1 year.
Expiry Date:	12 months



#### Immunohistochemistry

**Image 1.** Immunohistochemistry analysis of paraffin-embedded human colon carcinoma, using LAT (Phospho-Tyr191) Antibody. The picture on the right is treated with the synthesized peptide.



#### Western Blotting

**Image 2.** Western blot analysis of extracts from NIH-3T3 cells, using LAT (Phospho-Tyr191) Antibody. The lane on the right is treated with the synthesized peptide.