



[Go to Product page](#)

Datasheet for ABIN1531342
anti-MEF2D antibody (pSer444)

2 Images

Overview

Quantity:	100 µg
Target:	MEF2D
Binding Specificity:	AA 410-459, pSer444
Reactivity:	Human, Mouse, Rat
Host:	Rabbit
Clonality:	Polyclonal
Conjugate:	This MEF2D antibody is un-conjugated
Application:	Western Blotting (WB), ELISA, Immunohistochemistry (IHC)

Product Details

Immunogen:	The antiserum was produced against synthesized peptide derived from human MEF2D around the phosphorylation site of Ser444.
Isotype:	IgG
Specificity:	MEF2D (Phospho-Ser444) Antibody detects endogenous levels of MEF2D only when phosphorylated at Ser444. PhosphorylationH:S444 M:S437 R:S430
Purification:	The antibody was purified from rabbit antiserum by affinity-chromatography using phospho peptide. The antibody against non-phospho peptide was removed by chromatography using corresponding non-phospho peptide.
Purity:	> 95 %

Target Details

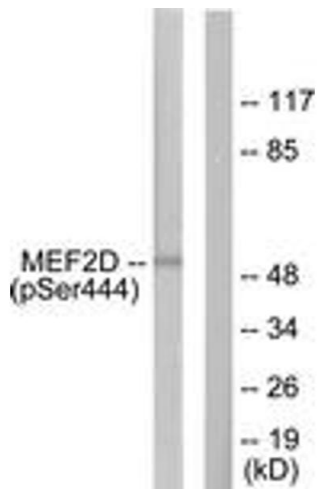
Target:	MEF2D
Alternative Name:	MEF2D (MEF2D Products)
Background:	Synonyms: MEFD, Myocyte-specific enhancer factor 2D NCBI Gene Symbol: MEF2D
Molecular Weight:	55 kDa
Gene ID:	4209
OMIM:	600663
UniProt:	Q14814

Application Details

Application Notes:	WB: 1:500~1:1000 IHC: 1:50~1:100 ELISA: 1:10000
Comment:	Unigene-Number: Hs.314327 (NCBI Gene Symbol: MEF2D)
Restrictions:	For Research Use only

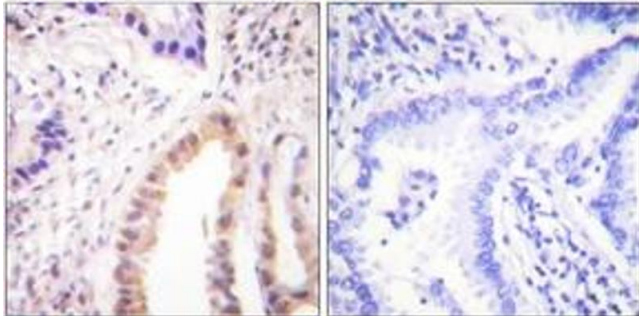
Handling

Format:	Liquid
Concentration:	1 mg/mL
Buffer:	phosphate buffered saline (without Mg ²⁺ and Ca ²⁺), pH 7.4, 150 mM NaCl, 0.02 % sodium azide and 50 % glycerol.
Preservative:	Sodium azide
Precaution of Use:	This product contains sodium azide: a POISONOUS AND HAZARDOUS SUBSTANCE which should be handled by trained staff only.
Storage:	-20 °C
Storage Comment:	Stable at -20°C for at least 1 year.
Expiry Date:	12 months



Western Blotting

Image 1. Western blot analysis of extracts from HepG2 cells treated with forskolin 40nM 30', using MEF2D (Phospho-Ser444) Antibody. The lane on the right is treated with the synthesized peptide.



Immunohistochemistry

Image 2. Immunohistochemistry analysis of paraffin-embedded human lung carcinoma, using MEF2D (Phospho-Ser444) Antibody. The picture on the right is treated with the synthesized peptide.