

Datasheet for ABIN1531369
anti-PDE4D antibody (pSer190)[Go to Product page](#)

2 Images

Overview

Quantity:	100 µg
Target:	PDE4D
Binding Specificity:	AA 156-205, pSer190
Reactivity:	Human, Rat, Mouse
Host:	Rabbit
Clonality:	Polyclonal
Conjugate:	This PDE4D antibody is un-conjugated
Application:	Western Blotting (WB), ELISA, Immunohistochemistry (IHC)

Product Details

Immunogen:	The antiserum was produced against synthesized peptide derived from human PDE4D around the phosphorylation site of Ser190/53.
Isotype:	IgG
Specificity:	PDE4D (Phospho-Ser190/53) Antibody detects endogenous levels of PDE4D only when phosphorylated at Ser190/53. PhosphorylationH:S190 M:S129 R:S185
Purification:	The antibody was purified from rabbit antiserum by affinity-chromatography using phospho peptide. The antibody against non-phospho peptide was removed by chromatography using corresponding non-phospho peptide.
Purity:	> 95 %

Target Details

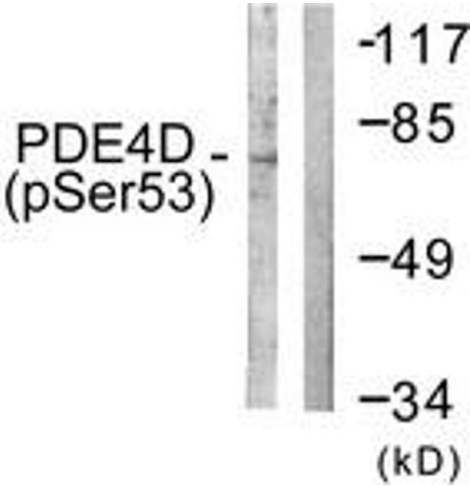
Target:	PDE4D
Alternative Name:	PDE4D (PDE4D Products)
Background:	Synonyms: DPDE3, PDE43, PDE4D4, cAMP-specific 3',5'-cyclic phosphodiesterase 4D NCBI Gene Symbol: PDE4D
Molecular Weight:	91 kDa
Gene ID:	5144
OMIM:	600129
UniProt:	Q08499
Pathways:	Cellular Response to Molecule of Bacterial Origin , cAMP Metabolic Process , Myometrial Relaxation and Contraction , Regulation of G-Protein Coupled Receptor Protein Signaling

Application Details

Application Notes:	WB: 1:500~1:1000 IHC: 1:50~1:100 ELISA: 1:20000
Comment:	Unigene-Number: Hs.117545 (NCBI Gene Symbol: PDE4D)
Restrictions:	For Research Use only

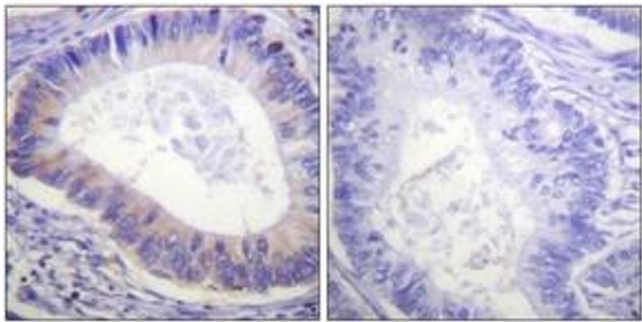
Handling

Format:	Liquid
Concentration:	1 mg/mL
Buffer:	phosphate buffered saline (without Mg ²⁺ and Ca ²⁺), pH 7.4, 150 mM NaCl, 0.02 % sodium azide and 50 % glycerol.
Preservative:	Sodium azide
Precaution of Use:	This product contains sodium azide: a POISONOUS AND HAZARDOUS SUBSTANCE which should be handled by trained staff only.
Storage:	-20 °C
Storage Comment:	Stable at -20°C for at least 1 year.
Expiry Date:	12 months



Western Blotting

Image 1. Western blot analysis of extracts from K562 cells treated with H₂O₂ 100uM 30', using PDE4D (Phospho-Ser190/53) Antibody. The lane on the right is treated with the synthesized peptide.



Immunohistochemistry

Image 2. Immunohistochemistry analysis of paraffin-embedded human colon carcinoma, using PDE4D (Phospho-Ser190/53) Antibody. The picture on the right is treated with the synthesized peptide.