

Datasheet for ABIN1531370
anti-PEA15 antibody (pSer116)



[Go to Product page](#)

2 Images

Overview

Quantity:	100 µL
Target:	PEA15
Binding Specificity:	AA 81-130, pSer116
Reactivity:	Human, Mouse, Rat
Host:	Rabbit
Clonality:	Polyclonal
Conjugate:	This PEA15 antibody is un-conjugated
Application:	Western Blotting (WB), ELISA, Immunohistochemistry (IHC)

Product Details

Immunogen:	The antiserum was produced against synthesized peptide derived from human PEA-15 around the phosphorylation site of Ser116.
Isotype:	IgG
Specificity:	PEA-15 (Phospho-Ser116) Antibody detects endogenous levels of PEA-15 only when phosphorylated at Ser116. PhosphorylationH:S116 M:S116 R:S116
Purification:	The antibody was purified from rabbit antiserum by affinity-chromatography using phospho peptide. The antibody against non-phospho peptide was removed by chromatography using corresponding non-phospho peptide.
Purity:	> 95 %

Target Details

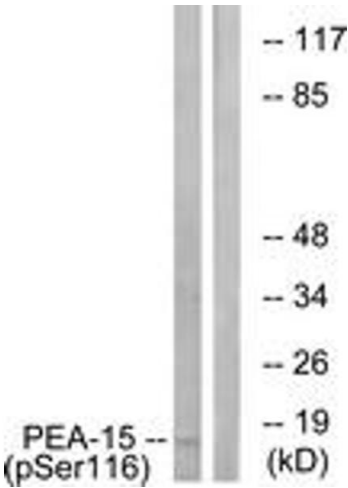
Target:	PEA15
Alternative Name:	PEA-15 (PEA15 Products)
Background:	Synonyms: Astrocytic phosphoprotein PEA-15, PE15, PEA15, PED, Phosphoprotein enriched in diabetes NCBI Gene Symbol: PEA15
Molecular Weight:	15 kDa
Gene ID:	8682
OMIM:	603434
UniProt:	Q15121

Application Details

Application Notes:	WB: 1:500~1:1000 IHC: 1:50~1:100 ELISA: 1:1000
Comment:	Unigene-Number: Hs.517216 (NCBI Gene Symbol: PEA15)
Restrictions:	For Research Use only

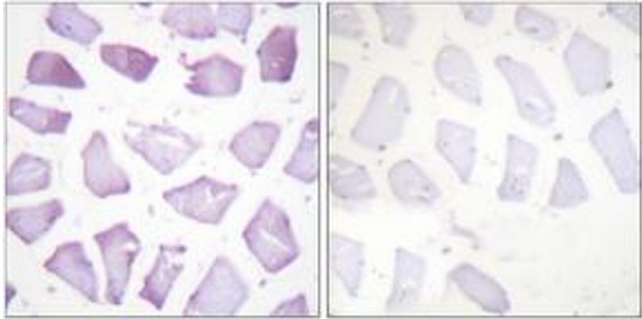
Handling

Format:	Liquid
Concentration:	1 mg/mL
Buffer:	phosphate buffered saline (without Mg2+ and Ca2+), pH 7.4, 150 mM NaCl, 0.02 % sodium azide and 50 % glycerol.
Preservative:	Sodium azide
Precaution of Use:	This product contains sodium azide: a POISONOUS AND HAZARDOUS SUBSTANCE which should be handled by trained staff only.
Storage:	-20 °C
Storage Comment:	Stable at -20°C for at least 1 year.
Expiry Date:	12 months



Western Blotting

Image 1. Western blot analysis of extracts from COS7 cells treated with INSULIN 0.01U/ML 15', using PEA-15 (Phospho-Ser116) Antibody. The lane on the right is treated with the synthesized peptide.



Immunohistochemistry

Image 2. Immunohistochemistry analysis of paraffin-embedded human skeletal muscle, using PEA-15 (Phospho-Ser116) Antibody. The picture on the right is treated with the synthesized peptide.