

Datasheet for ABIN1531375

anti-Phospholipase C gamma 2 antibody (pTyr1217)**3** Images[Go to Product page](#)

Overview

Quantity:	100 µg
Target:	Phospholipase C gamma 2 (PLCG2)
Binding Specificity:	AA 1186-1235, pTyr1217
Reactivity:	Human, Rat, Mouse
Host:	Rabbit
Clonality:	Polyclonal
Conjugate:	This Phospholipase C gamma 2 antibody is un-conjugated
Application:	Western Blotting (WB), Immunohistochemistry (IHC), ELISA, Immunofluorescence (IF)

Product Details

Immunogen:	The antiserum was produced against synthesized peptide derived from human PLCG2 around the phosphorylation site of Tyr1217.
Isotype:	IgG
Specificity:	PLCG2 (Phospho-Tyr1217) Antibody detects endogenous levels of PLCG2 only when phosphorylated at Tyr1217. PhosphorylationH:Y1217 M:Y1217 R:Y1217
Purification:	The antibody was purified from rabbit antiserum by affinity-chromatography using phospho peptide. The antibody against non-phospho peptide was removed by chromatography using corresponding non-phospho peptide.
Purity:	> 95 %

Target Details

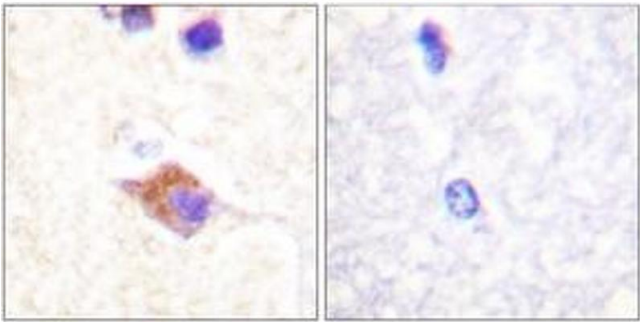
Target:	Phospholipase C gamma 2 (PLCG2)
Alternative Name:	PLCG2 (PLCG2 Products)
Background:	Synonyms: 1-phosphatidylinositol-4,5-bisphosphate phosphodiesterase gamma 2, phospholipase C-gamma-2, PLC-gamma2, PLC-IV NCBI Gene Symbol: PLCG2
Molecular Weight:	147 kDa
Gene ID:	5336
OMIM:	600220
UniProt:	P16885
Pathways:	RTK Signaling , WNT Signaling , Fc-epsilon Receptor Signaling Pathway , Inositol Metabolic Process , Myometrial Relaxation and Contraction , Toll-Like Receptors Cascades , VEGF Signaling , BCR Signaling

Application Details

Application Notes:	WB: 1:500~1:1000 IHC: 1:50~1:100 IF: 1:100~1:500 ELISA: 1:1000
Comment:	Unigene-Number: Hs.413111 (NCBI Gene Symbol: PLCG2)
Restrictions:	For Research Use only

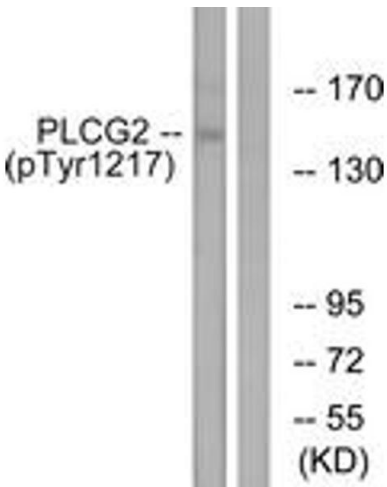
Handling

Format:	Liquid
Concentration:	1 mg/mL
Buffer:	phosphate buffered saline (without Mg ²⁺ and Ca ²⁺), pH 7.4, 150 mM NaCl, 0.02 % sodium azide and 50 % glycerol.
Preservative:	Sodium azide
Precaution of Use:	This product contains sodium azide: a POISONOUS AND HAZARDOUS SUBSTANCE which should be handled by trained staff only.
Storage:	-20 °C
Storage Comment:	Stable at -20°C for at least 1 year.
Expiry Date:	12 months



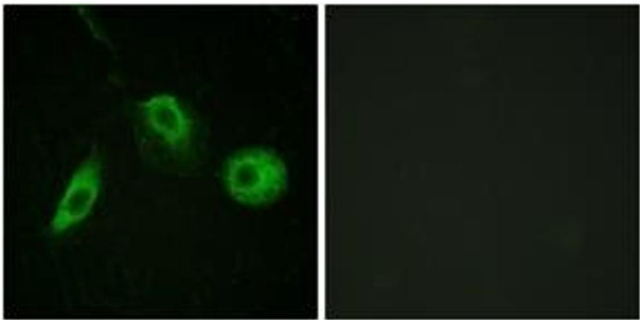
Immunohistochemistry

Image 1. Immunohistochemistry analysis of paraffin-embedded human brain, using PLCG2 (Phospho-Tyr1217) Antibody. The picture on the right is treated with the synthesized peptide.



Western Blotting

Image 2. Western blot analysis of extracts from Jurkat cells treated with UV 15', using PLCG2 (Phospho-Tyr1217) Antibody. The lane on the right is treated with the synthesized peptide.



Immunofluorescence

Image 3. Immunofluorescence analysis of HeLa cells, using PLCG2 (Phospho-Tyr1217) Antibody. The picture on the right is treated with the synthesized peptide.