

Datasheet for ABIN1531377
anti-PPP2CA antibody (pTyr307)

3 Images

[Go to Product page](#)

Overview

Quantity:	100 µg
Target:	PPP2CA
Binding Specificity:	AA 260-309, pTyr307
Reactivity:	Human, Mouse, Rat
Host:	Rabbit
Clonality:	Polyclonal
Conjugate:	This PPP2CA antibody is un-conjugated
Application:	Western Blotting (WB), ELISA, Immunohistochemistry (IHC), Immunofluorescence (IF)

Product Details

Immunogen:	The antiserum was produced against synthesized peptide derived from human PP2A-alpha around the phosphorylation site of Tyr307.
Isotype:	IgG
Specificity:	PP2A-alpha (Phospho-Tyr307) Antibody detects endogenous levels of PP2A-alpha only when phosphorylated at Tyr307. PhosphorylationH:Y307 M:Y307 R:Y307
Purification:	The antibody was purified from rabbit antiserum by affinity-chromatography using phospho peptide. The antibody against non-phospho peptide was removed by chromatography using corresponding non-phospho peptide.
Purity:	> 95 %

Target Details

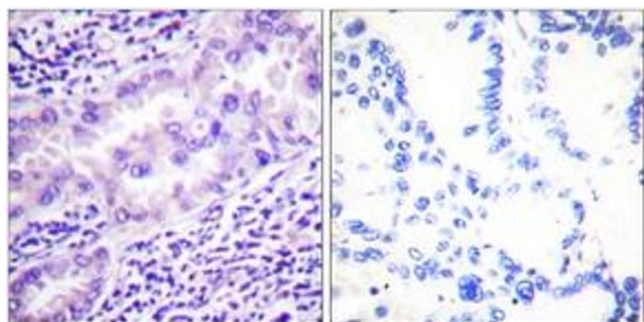
Target:	PPP2CA
Alternative Name:	PP2A-alpha (PPP2CA Products)
Background:	Synonyms: PP2A-alpha, PP2AA, RP-C, Replication protein C, Serine/threonine protein phosphatase 2A, catalytic subunit, alpha isoform NCBI Gene Symbol: PPP2CA
Molecular Weight:	35 kDa
Gene ID:	5515
OMIM:	176915
UniProt:	P67775
Pathways:	PI3K-Akt Signaling , Mitotic G1-G1/S Phases , Hepatitis C , Toll-Like Receptors Cascades

Application Details

Application Notes:	WB: 1:500~1:1000 IHC: 1:50~1:100 IF: 1:100~1:500 ELISA: 1:5000
Comment:	Unigene-Number: Hs.483408 (NCBI Gene Symbol: PPP2CA)
Restrictions:	For Research Use only

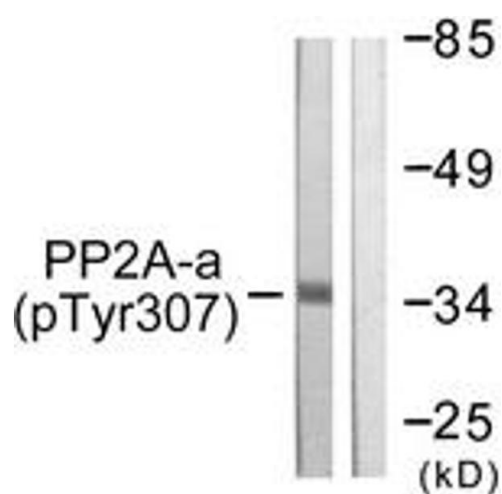
Handling

Format:	Liquid
Concentration:	1 mg/mL
Buffer:	phosphate buffered saline (without Mg ²⁺ and Ca ²⁺), pH 7.4, 150 mM NaCl, 0.02 % sodium azide and 50 % glycerol.
Preservative:	Sodium azide
Precaution of Use:	This product contains sodium azide: a POISONOUS AND HAZARDOUS SUBSTANCE which should be handled by trained staff only.
Storage:	-20 °C
Storage Comment:	Stable at -20°C for at least 1 year.
Expiry Date:	12 months



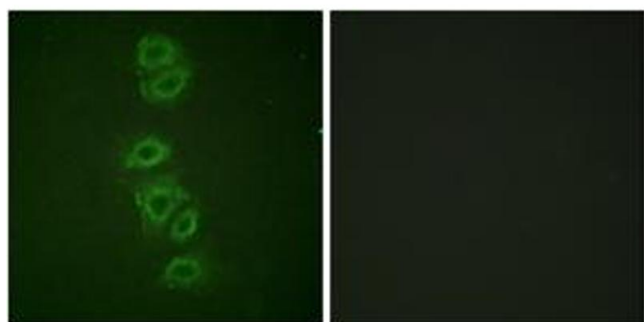
Immunohistochemistry

Image 1. Immunohistochemistry analysis of paraffin-embedded human lung carcinoma, using PP2A-alpha (Phospho-Tyr307) Antibody. The picture on the right is treated with the synthesized peptide.



Western Blotting

Image 2. Western blot analysis of extracts from A549 cells, using PP2A-alpha (Phospho-Tyr307) Antibody. The lane on the right is treated with the synthesized peptide.



Immunofluorescence

Image 3. Immunofluorescence analysis of A549 cells, using PP2A-alpha (Phospho-Tyr307) Antibody. The picture on the right is treated with the synthesized peptide.