

Datasheet for ABIN1531384
anti-RPH3A antibody (pSer237)[Go to Product page](#)

3 Images

Overview

Quantity:	100 µg
Target:	RPH3A
Binding Specificity:	AA 203-252, pSer237
Reactivity:	Human, Mouse, Rat
Host:	Rabbit
Clonality:	Polyclonal
Conjugate:	This RPH3A antibody is un-conjugated
Application:	Western Blotting (WB), Immunohistochemistry (IHC), ELISA, Immunofluorescence (IF)

Product Details

Immunogen:	The antiserum was produced against synthesized peptide derived from human Rabphilin 3A around the phosphorylation site of Ser237.
Isotype:	IgG
Specificity:	Rabphilin 3A (Phospho-Ser237) Antibody detects endogenous levels of Rabphilin 3A only when phosphorylated at Ser237. PhosphorylationH:S237 M:S234 R:S234
Purification:	The antibody was purified from rabbit antiserum by affinity-chromatography using phospho peptide. The antibody against non-phospho peptide was removed by chromatography using corresponding non-phospho peptide.
Purity:	> 95 %

Target Details

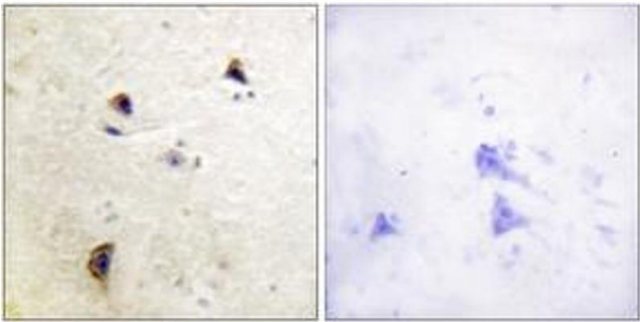
Target:	RPH3A
Alternative Name:	Rabphilin 3A (RPH3A Products)
Background:	Synonyms: RP3A, RPH3A, exophilin 1 NCBI Gene Symbol: RPH3A
Molecular Weight:	76 kDa
Gene ID:	22895
UniProt:	Q9Y2J0
Pathways:	Synaptic Vesicle Exocytosis

Application Details

Application Notes:	WB: 1:500~1:1000 IHC: 1:50~1:100 IF: 1:100~1:500 ELISA: 1:1000
Comment:	Unigene-Number: Hs.21239 (NCBI Gene Symbol: RPH3A)
Restrictions:	For Research Use only

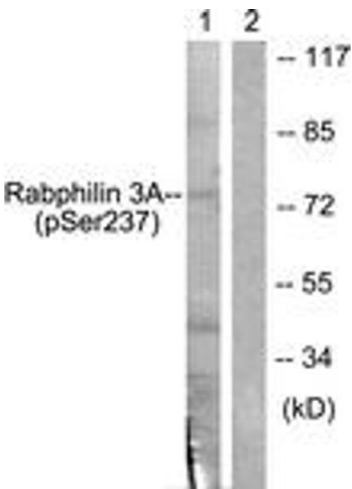
Handling

Format:	Liquid
Concentration:	1 mg/mL
Buffer:	phosphate buffered saline (without Mg ²⁺ and Ca ²⁺), pH 7.4, 150 mM NaCl, 0.02 % sodium azide and 50 % glycerol.
Preservative:	Sodium azide
Precaution of Use:	This product contains sodium azide: a POISONOUS AND HAZARDOUS SUBSTANCE which should be handled by trained staff only.
Storage:	-20 °C
Storage Comment:	Stable at -20°C for at least 1 year.
Expiry Date:	12 months



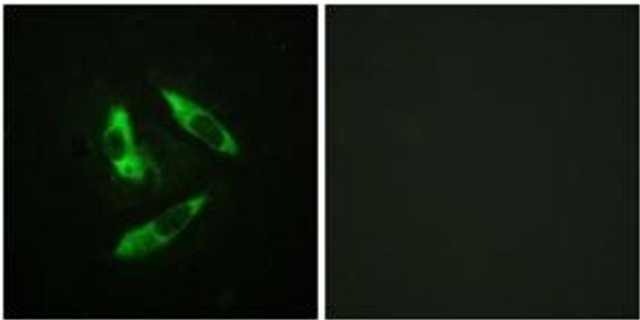
Immunohistochemistry

Image 1. Immunohistochemistry analysis of paraffin-embedded human brain, using Rabphilin 3A (Phospho-Ser237) Antibody. The picture on the right is treated with the synthesized peptide.



Western Blotting

Image 2. Western blot analysis of extracts from RAW264.7 cells treated with Calyculin 100nM 15', using Rabphilin 3A (Phospho-Ser237) Antibody. The lane on the right is treated with the synthesized peptide.



Immunofluorescence

Image 3. Immunofluorescence analysis of HeLa cells, using Rabphilin 3A (Phospho-Ser237) Antibody. The picture on the right is treated with the synthesized peptide.