

Datasheet for ABIN1531391

anti-Splicing Factor 1 antibody (pSer82)**3** Images[Go to Product page](#)

Overview

Quantity:	100 µg
Target:	Splicing Factor 1 (SF1)
Binding Specificity:	AA 48-97, pSer82
Reactivity:	Human, Mouse
Host:	Rabbit
Clonality:	Polyclonal
Conjugate:	This Splicing Factor 1 antibody is un-conjugated
Application:	Western Blotting (WB), ELISA, Immunohistochemistry (IHC), Immunofluorescence (IF)

Product Details

Immunogen:	The antiserum was produced against synthesized peptide derived from human SF1 around the phosphorylation site of Ser82.
Isotype:	IgG
Specificity:	SF1 (Phospho-Ser82) Antibody detects endogenous levels of SF1 only when phosphorylated at Ser82. PhosphorylationH:S82 M:S82
Purification:	The antibody was purified from rabbit antiserum by affinity-chromatography using phospho peptide. The antibody against non-phospho peptide was removed by chromatography using corresponding non-phospho peptide.
Purity:	> 95 %

Target Details

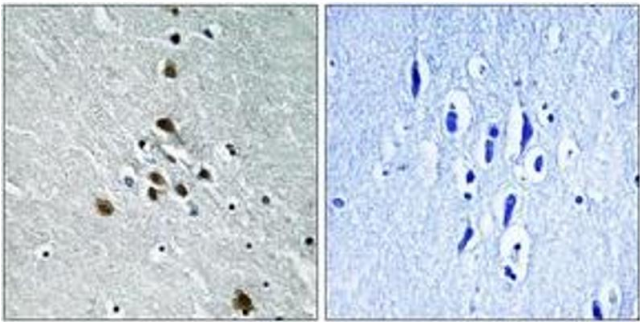
Target:	Splicing Factor 1 (SF1)
Alternative Name:	SF1 (SF1 Products)
Background:	Synonyms: BBP, CW17, mammalian branch point binding protein mBBP, mZFM, SF01, Splicing factor 1, splicing factor SF1, transcription factor ZFM1, ZFM1, ZFP162, zinc finger gene in MEN1 locus, zinc finger protein 162, ZNF162 NCBI Gene Symbol: SF1
Molecular Weight:	68 kDa
Gene ID:	7536
OMIM:	601516
UniProt:	Q15637
Pathways:	Nuclear Receptor Transcription Pathway , Steroid Hormone Mediated Signaling Pathway , Ribonucleoprotein Complex Subunit Organization , Maintenance of Protein Location

Application Details

Application Notes:	WB: 1:500~1:1000 IHC: 1:50~1:100 IF: 1:100~1:500 ELISA: 1:1000
Comment:	Unigene-Number: Hs.502829, Hs.708209 (NCBI Gene Symbol: SF1)
Restrictions:	For Research Use only

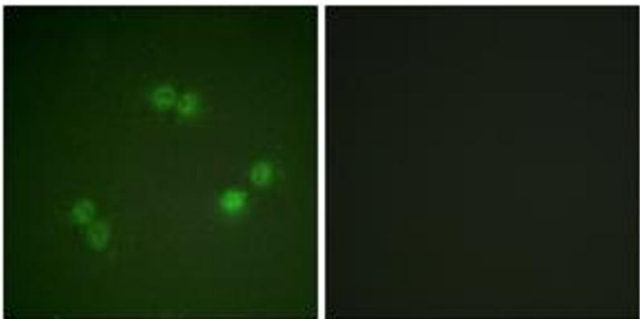
Handling

Format:	Liquid
Concentration:	1 mg/mL
Buffer:	phosphate buffered saline (without Mg ²⁺ and Ca ²⁺), pH 7.4, 150 mM NaCl, 0.02 % sodium azide and 50 % glycerol.
Preservative:	Sodium azide
Precaution of Use:	This product contains sodium azide: a POISONOUS AND HAZARDOUS SUBSTANCE which should be handled by trained staff only.
Storage:	-20 °C
Storage Comment:	Stable at -20°C for at least 1 year.
Expiry Date:	12 months



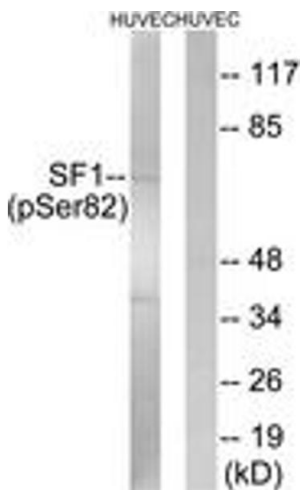
Immunohistochemistry

Image 1. Immunohistochemistry analysis of paraffin-embedded human brain, using SF1 (Phospho-Ser82) Antibody. The picture on the right is treated with the synthesized peptide.



Immunofluorescence

Image 2. Immunofluorescence analysis of A549 cells, using SF1 (Phospho-Ser82) Antibody. The picture on the right is treated with the synthesized peptide.



Western Blotting

Image 3. Western blot analysis of extracts from HuvEc cells treated with anisomycin 25ug/ml 30', using SF1 (Phospho-Ser82) Antibody. The lane on the right is treated with the synthesized peptide.