



[Go to Product page](#)

Datasheet for ABIN1531399
anti-Synuclein antibody (pSer129)

2 Images

Overview

Quantity:	100 µL
Target:	Synuclein (SYU)
Binding Specificity:	AA 91-140, pSer129
Reactivity:	Human, Mouse, Rat
Host:	Rabbit
Clonality:	Polyclonal
Conjugate:	This Synuclein antibody is un-conjugated
Application:	Western Blotting (WB), Immunohistochemistry (IHC), ELISA

Product Details

Immunogen:	The antiserum was produced against synthesized peptide derived from human Synuclein around the phosphorylation site of Ser129.
Isotype:	IgG
Specificity:	Synuclein (Phospho-Ser129) Antibody detects endogenous levels of Synuclein only when phosphorylated at Ser129. PhosphorylationH:S129 M:S129 R:S129
Purification:	The antibody was purified from rabbit antiserum by affinity-chromatography using phospho peptide. The antibody against non-phospho peptide was removed by chromatography using corresponding non-phospho peptide.
Purity:	> 95 %

Target Details

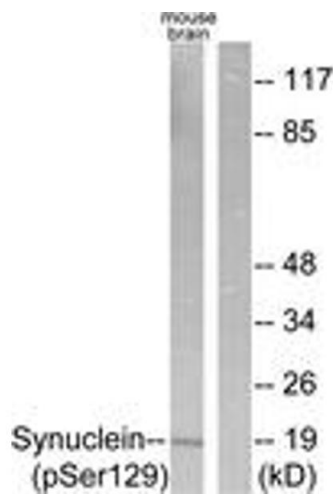
Target:	Synuclein (SYU)
Alternative Name:	Synuclein (SYU Products)
Background:	Synonyms: Alpha-synuclein, Non-A beta component of AD amyloid, Non-A4 component of amyloid precursor, NACP, SNCA, NACP, PARK1 NCBI Gene Symbol: SNCA
Molecular Weight:	14 kDa
Gene ID:	6622
OMIM:	127750
UniProt:	P37840

Application Details

Application Notes:	WB: 1:500~1:1000 IHC: 1:50~1:100 ELISA: 1:1000
Comment:	Unigene-Number: Hs.271771 (NCBI Gene Symbol: SNCA)
Restrictions:	For Research Use only

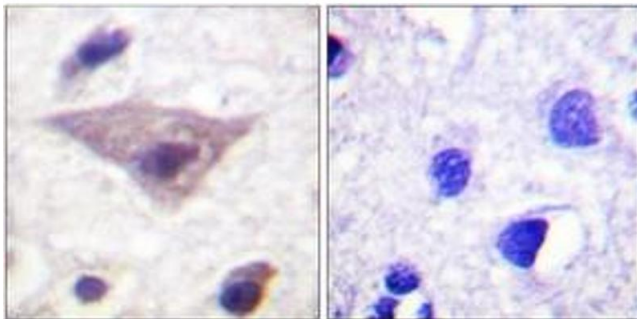
Handling

Format:	Liquid
Concentration:	1 mg/mL
Buffer:	phosphate buffered saline (without Mg ²⁺ and Ca ²⁺), pH 7.4, 150 mM NaCl, 0.02 % sodium azide and 50 % glycerol.
Preservative:	Sodium azide
Precaution of Use:	This product contains sodium azide: a POISONOUS AND HAZARDOUS SUBSTANCE which should be handled by trained staff only.
Storage:	-20 °C
Storage Comment:	Stable at -20°C for at least 1 year.
Expiry Date:	12 months



Western Blotting

Image 1. Western blot analysis of extracts from mouse brain, using Synuclein (Phospho-Ser129) Antibody. The lane on the right is treated with the synthesized peptide.



Immunohistochemistry

Image 2. Immunohistochemistry analysis of paraffin-embedded human brain, using Synuclein (Phospho-Ser129) Antibody. The picture on the right is treated with the synthesized peptide.