

Datasheet for ABIN1531413
anti-WASF1 antibody (pTyr125)[Go to Product page](#)

2 Images

Overview

Quantity:	100 µg
Target:	WASF1
Binding Specificity:	AA 91-140, pTyr125
Reactivity:	Human, Mouse, Rat
Host:	Rabbit
Clonality:	Polyclonal
Conjugate:	This WASF1 antibody is un-conjugated
Application:	Western Blotting (WB), ELISA, Immunohistochemistry (IHC)

Product Details

Immunogen:	The antiserum was produced against synthesized peptide derived from human WAVE1 around the phosphorylation site of Tyr125.
Isotype:	IgG
Specificity:	WAVE1 (Phospho-Tyr125) Antibody detects endogenous levels of WAVE1 only when phosphorylated at Tyr125. PhosphorylationH:Y125 M:Y125 R:Y125
Purification:	The antibody was purified from rabbit antiserum by affinity-chromatography using phospho peptide. The antibody against non-phospho peptide was removed by chromatography using corresponding non-phospho peptide.
Purity:	> 95 %

Target Details

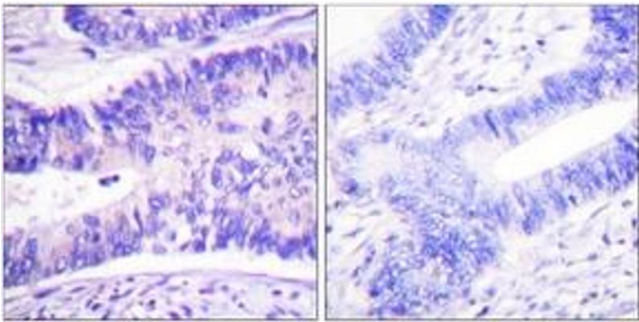
Target:	WASF1
Alternative Name:	WAVE1 (WASF1 Products)
Background:	Synonyms: KIAA0269, SCAR1, Verprolin homology domain-containing protein 1, WAS1, WASF1, WASP-family protein member 1, Wiskott-Aldrich syndrome protein family member 1 NCBI Gene Symbol: WASF1
Molecular Weight:	61 kDa
Gene ID:	8936
OMIM:	605035
UniProt:	Q92558
Pathways:	RTK Signaling , Regulation of Actin Filament Polymerization

Application Details

Application Notes:	WB: 1:500~1:1000 IHC: 1:50~1:100 ELISA: 1:1000
Comment:	Unigene-Number: Hs.75850 (NCBI Gene Symbol: WASF1)
Restrictions:	For Research Use only

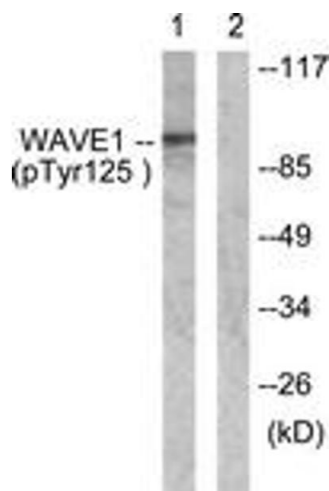
Handling

Format:	Liquid
Concentration:	1 mg/mL
Buffer:	phosphate buffered saline (without Mg ²⁺ and Ca ²⁺), pH 7.4, 150 mM NaCl, 0.02 % sodium azide and 50 % glycerol.
Preservative:	Sodium azide
Precaution of Use:	This product contains sodium azide: a POISONOUS AND HAZARDOUS SUBSTANCE which should be handled by trained staff only.
Storage:	-20 °C
Storage Comment:	Stable at -20°C for at least 1 year.
Expiry Date:	12 months



Immunohistochemistry

Image 1. Immunohistochemistry analysis of paraffin-embedded human colon carcinoma, using WAVE1 (Phospho-Tyr125) Antibody. The picture on the right is treated with the synthesized peptide.



Western Blotting

Image 2. Western blot analysis of extracts from NIH-3T3 cells treated with Insulin 0.01U/ml 15', using WAVE1 (Phospho-Tyr125) Antibody. The lane on the right is treated with the synthesized peptide.