

Datasheet for ABIN1531422
anti-ACLY antibody (pSer455)



[Go to Product page](#)

2 Images

Overview

Quantity:	100 µL
Target:	ACLY
Binding Specificity:	AA 420-469, pSer455
Reactivity:	Human, Mouse, Rat
Host:	Rabbit
Clonality:	Polyclonal
Conjugate:	This ACLY antibody is un-conjugated
Application:	Western Blotting (WB), ELISA, Immunohistochemistry (IHC)

Product Details

Immunogen:	The antiserum was produced against synthesized peptide derived from human ATP-Citrate Lyase around the phosphorylation site of Ser454.
Isotype:	IgG
Specificity:	ATP-Citrate Lyase (Phospho-Ser454) Antibody detects endogenous levels of ATP-Citrate Lyase only when phosphorylated at Ser454. PhosphorylationH:S455 M:S455 R:S454
Purification:	The antibody was purified from rabbit antiserum by affinity-chromatography using phospho peptide. The antibody against non-phospho peptide was removed by chromatography using corresponding non-phospho peptide.
Purity:	> 95 %

Target Details

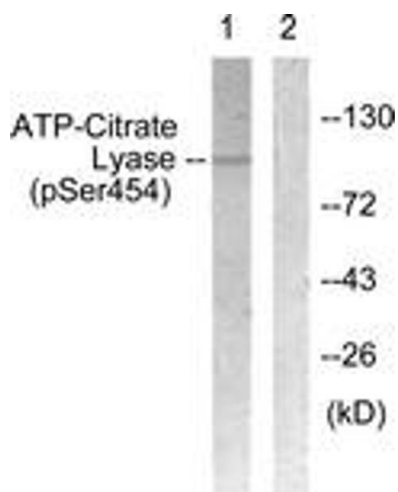
Target:	ACLY
Alternative Name:	ATP-Citrate Lyase (ACLY Products)
Background:	Synonyms: ATP-citrate (pro-S-)-lyase, ATP-citrate lyase, Citrate cleavage enzyme, NCBI Gene Symbol: ACLY
Molecular Weight:	120 kDa
Gene ID:	47
OMIM:	108728
UniProt:	P53396
Pathways:	Warburg Effect

Application Details

Application Notes:	WB: 1:500~1:1000 IHC: 1:50~1:100 ELISA: 1:1000
Comment:	Unigene-Number: Hs.387567 (NCBI Gene Symbol: ACLY)
Restrictions:	For Research Use only

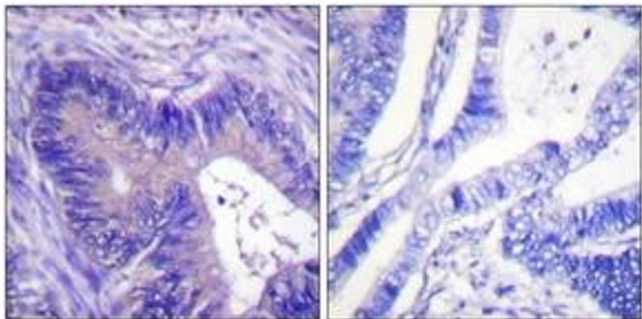
Handling

Format:	Liquid
Concentration:	1 mg/mL
Buffer:	phosphate buffered saline (without Mg ²⁺ and Ca ²⁺), pH 7.4, 150 mM NaCl, 0.02 % sodium azide and 50 % glycerol.
Preservative:	Sodium azide
Precaution of Use:	This product contains sodium azide: a POISONOUS AND HAZARDOUS SUBSTANCE which should be handled by trained staff only.
Storage:	-20 °C
Storage Comment:	Stable at -20°C for at least 1 year.
Expiry Date:	12 months



Western Blotting

Image 1. Western blot analysis of extracts from COS7 cells treated with Calyculin 50nM 30', using ATP-Citrate Lyase (Phospho-Ser454) Antibody. The lane on the right is treated with the synthesized peptide.



Immunohistochemistry

Image 2. Immunohistochemistry analysis of paraffin-embedded human colon carcinoma, using ATP-Citrate Lyase (Phospho-Ser454) Antibody. The picture on the right is treated with the synthesized peptide.