

Datasheet for ABIN1531431
anti-EIF4B antibody (pSer422)



[Go to Product page](#)

3 Images

Overview

Quantity:	100 µL
Target:	EIF4B
Binding Specificity:	AA 388-437, pSer422
Reactivity:	Human, Mouse
Host:	Rabbit
Clonality:	Polyclonal
Conjugate:	This EIF4B antibody is un-conjugated
Application:	Western Blotting (WB), ELISA, Immunohistochemistry (IHC), Immunofluorescence (IF)

Product Details

Immunogen:	The antiserum was produced against synthesized peptide derived from human eIF4B around the phosphorylation site of Ser422.
Isotype:	IgG
Specificity:	eIF4B (Phospho-Ser422) Antibody detects endogenous levels of eIF4B only when phosphorylated at Ser422. PhosphorylationH:S422 M:S422
Purification:	The antibody was purified from rabbit antiserum by affinity-chromatography using phospho peptide. The antibody against non-phospho peptide was removed by chromatography using corresponding non-phospho peptide.
Purity:	> 95 %

Target Details

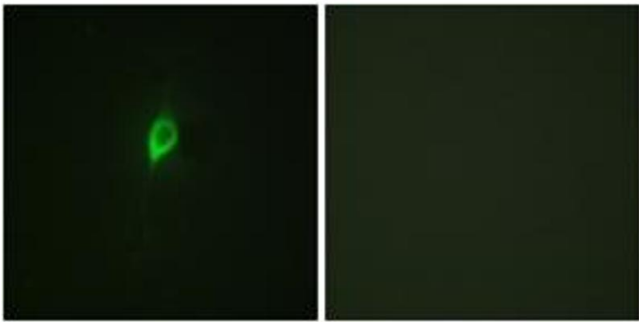
Target:	EIF4B
Alternative Name:	eIF4B (EIF4B Products)
Background:	Synonyms: Eukaryotic translation initiation factor 4B, IF4B, eIF-4B NCBI Gene Symbol: EIF4B
Molecular Weight:	69 kDa
Gene ID:	3716
OMIM:	147795
UniProt:	P23588

Application Details

Application Notes:	WB: 1:500~1:1000 IHC: 1:50~1:100 IF: 1:100~1:500 ELISA: 1:40000
Comment:	Unigene-Number: Hs.207538 (NCBI Gene Symbol: EIF4B)
Restrictions:	For Research Use only

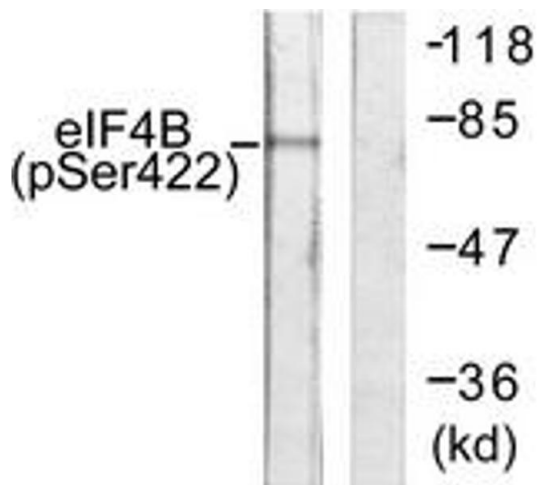
Handling

Format:	Liquid
Concentration:	1 mg/mL
Buffer:	phosphate buffered saline (without Mg ²⁺ and Ca ²⁺), pH 7.4, 150 mM NaCl, 0.02 % sodium azide and 50 % glycerol.
Preservative:	Sodium azide
Precaution of Use:	This product contains sodium azide: a POISONOUS AND HAZARDOUS SUBSTANCE which should be handled by trained staff only.
Storage:	-20 °C
Storage Comment:	Stable at -20°C for at least 1 year.
Expiry Date:	12 months



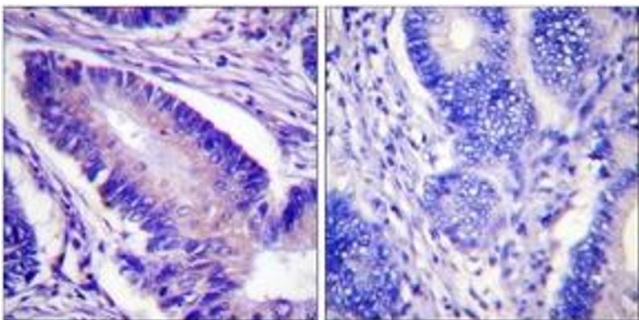
Immunofluorescence

Image 1. Immunofluorescence analysis of NIH-3T3 cells, using eIF4B (Phospho-Ser422) Antibody. The picture on the right is treated with the synthesized peptide.



Western Blotting

Image 2. Western blot analysis of extracts from NIH-3T3 cells, using eIF4B (Phospho-Ser422) Antibody. The lane on the right is treated with the synthesized peptide.



Immunohistochemistry

Image 3. Immunohistochemistry analysis of paraffin-embedded human colon carcinoma, using eIF4B (Phospho-Ser422) Antibody. The picture on the right is treated with the synthesized peptide.