

Datasheet for ABIN1531433
anti-BMX antibody (pTyr40)

3 Images

[Go to Product page](#)

Overview

Quantity:	100 µg
Target:	BMX
Binding Specificity:	AA 6-55, pTyr40
Reactivity:	Human, Mouse
Host:	Rabbit
Clonality:	Polyclonal
Conjugate:	This BMX antibody is un-conjugated
Application:	Western Blotting (WB), Immunohistochemistry (IHC), ELISA, Immunofluorescence (IF)

Product Details

Immunogen:	The antiserum was produced against synthesized peptide derived from human ETK around the phosphorylation site of Tyr40.
Isotype:	IgG
Specificity:	ETK (Phospho-Tyr40) Antibody detects endogenous levels of ETK only when phosphorylated at Tyr40. PhosphorylationH:Y40 M:Y40
Purification:	The antibody was purified from rabbit antiserum by affinity-chromatography using phospho peptide. The antibody against non-phospho peptide was removed by chromatography using corresponding non-phospho peptide.
Purity:	> 95 %

Target Details

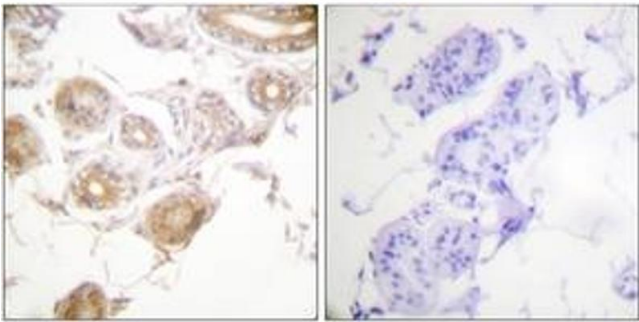
Target:	BMX
Alternative Name:	ETK (BMX Products)
Background:	Synonyms: BMX, BMX NON-receptor tyrosine kinase, Bone marrow kinase BMX, Cytoplasmic BMX, Epithelial and endothelial tyrosine kinase, NTK38, Protein tyrosine kinase BMX, kinase Etk NCBI Gene Symbol: BMX
Molecular Weight:	78 kDa
Gene ID:	660
OMIM:	300101
UniProt:	P51813

Application Details

Application Notes:	WB: 1:500~1:1000 IHC: 1:50~1:100 IF: 1:100~1:500 ELISA: 1:40000
Comment:	Unigene-Number: Hs.495731 (NCBI Gene Symbol: BMX)
Restrictions:	For Research Use only

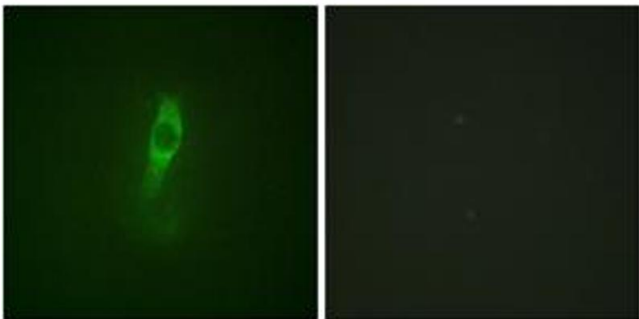
Handling

Format:	Liquid
Concentration:	1 mg/mL
Buffer:	phosphate buffered saline (without Mg ²⁺ and Ca ²⁺), pH 7.4, 150 mM NaCl, 0.02 % sodium azide and 50 % glycerol.
Preservative:	Sodium azide
Precaution of Use:	This product contains sodium azide: a POISONOUS AND HAZARDOUS SUBSTANCE which should be handled by trained staff only.
Storage:	-20 °C
Storage Comment:	Stable at -20°C for at least 1 year.
Expiry Date:	12 months



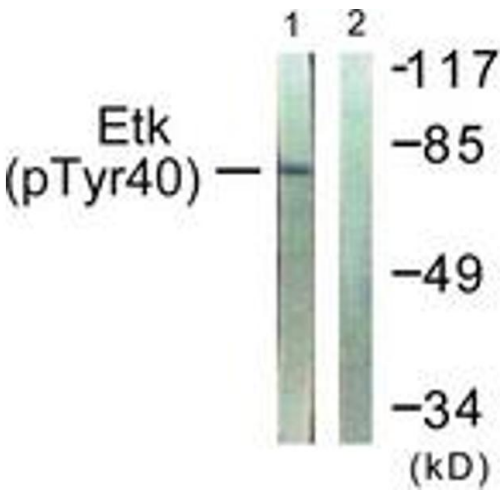
Immunohistochemistry

Image 1. Immunohistochemistry analysis of paraffin-embedded human skin, using ETK (Phospho-Tyr40) Antibody. The picture on the right is treated with the synthesized peptide.



Immunofluorescence

Image 2. Immunofluorescence analysis of NIH-3T3 cells, using ETK (Phospho-Tyr40) Antibody. The picture on the right is treated with the synthesized peptide.



Western Blotting

Image 3. Western blot analysis of extracts from HepG2 cells, using ETK (Phospho-Tyr40) Antibody. The lane on the right is treated with the synthesized peptide.